

PTFIX-NS15A - DIN rail adapter

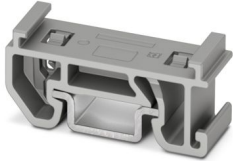


3274058

<https://www.phoenixcontact.com/us/products/3274058>

Please be informed that the data shown in this PDF document is generated from our online catalog. Please find the complete data in the user documentation. Our general terms of use for downloads are valid.

DIN rail adapter, for NS 15 for accommodating 2.5 mm² and 4 mm² FIX blocks in horizontal direction, color: gray



Commercial data

Item number	3274058
Packing unit	20 pc
Minimum order quantity	20 pc
Sales key	BE09
Product key	BEAZ11
GTIN	4055626375090
Weight per piece (including packing)	1.187 g
Weight per piece (excluding packing)	1.16 g
Customs tariff number	39269097
Country of origin	PL

PTFIX-NS15A - DIN rail adapter



3274058

<https://www.phoenixcontact.com/us/products/3274058>

Technical data

Product properties

Product type	Mounting material
--------------	-------------------

Dimensions

Width	10.3 mm
Height	28.6 mm
Depth	10.8 mm
Depth on NS 15	13.7 mm

Material specifications

Color	gray (RAL 7042)
Flammability rating according to UL 94	V0

Environmental and real-life conditions

Ambient conditions

Ambient temperature (operation)	-60 °C ... 105 °C (max. short-term operating temperature RTI Elec.)
Ambient temperature (storage/transport)	-25 °C ... 60 °C (for a short time, not exceeding 24 h, -60 °C to +70 °C)
Ambient temperature (assembly)	-5 °C ... 70 °C
Ambient temperature (actuation)	-5 °C ... 70 °C
Permissible humidity (storage/transport)	30 % ... 70 %

Mounting

Mounting type	NS 15
---------------	-------

PTFIX-NS15A - DIN rail adapter



3274058

<https://www.phoenixcontact.com/us/products/3274058>

Classifications

ECLASS

ECLASS-13.0	27370419
ECLASS-15.0	27370419

ETIM

ETIM 10.0	EC001024
-----------	----------

UNSPSC

UNSPSC 21.0	39121400
-------------	----------

PTFIX-NS15A - DIN rail adapter



3274058

<https://www.phoenixcontact.com/us/products/3274058>

Environmental product compliance

EU RoHS

Fulfills EU RoHS substance requirements	Yes, No exemptions
-----------------------------------------	--------------------

China RoHS

Environment friendly use period (EFUP)	EFUP-E
	No hazardous substances above the limits

EU REACH SVHC

REACH candidate substance (CAS No.)	No substance above 0.1 wt%
-------------------------------------	----------------------------

EF3.1 Climate Change

CO2e kg	0.05 kg CO2e
---------	--------------

Phoenix Contact 2026 © - all rights reserved
<https://www.phoenixcontact.com>

Phoenix Contact USA
586 Fulling Mill Road
Middletown, PA 17057, United States
(+717) 944-1300
info@phoenixcon.com