

# EB 3-20/PT - Insertion bridge

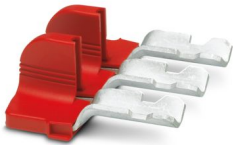


3260068

<https://www.phoenixcontact.com/us/products/3260068>

Please be informed that the data shown in this PDF document is generated from our online catalog. Please find the complete data in the user documentation. Our general terms of use for downloads are valid.

Insertion bridge, pitch: 20 mm, number of positions: 3, nominal current: 150 A, length: 65 mm, color: red



## Commercial data

Item number	3260068
Packing unit	10 pc
Minimum order quantity	10 pc
Sales key	BE29
Product key	BE2Z2X
GTIN	4046356997997
Weight per piece (including packing)	43 g
Weight per piece (excluding packing)	42.79 g
Customs tariff number	85366990
Country of origin	PL

# EB 3-20/PT - Insertion bridge



3260068

<https://www.phoenixcontact.com/us/products/3260068>

## Technical data

### Product properties

Product type	Insertion bridge
Number of positions	3
Pitch	20 mm

### Electrical properties

Maximum load current	150 A
----------------------	-------

### Connection data

Maximum load current	150 A
----------------------	-------

### Dimensions

Width	55.3 mm
Height	64.5 mm
Depth	27.9 mm
Length	64.5 mm
Pitch	20 mm

### Material specifications

Color	red (RAL 3001)
Material	Metal
Flammability rating according to UL 94	V0
Coating	tin-plated
Insulating material	PA

# EB 3-20/PT - Insertion bridge



3260068

<https://www.phoenixcontact.com/us/products/3260068>

## Classifications

### ECLASS

ECLASS-13.0	27250303
ECLASS-15.0	27250303

### ETIM

ETIM 10.0	EC000489
-----------	----------

### UNSPSC

UNSPSC 21.0	39121400
-------------	----------

# EB 3-20/PT - Insertion bridge



3260068

<https://www.phoenixcontact.com/us/products/3260068>

## Environmental product compliance

### EU RoHS

Fulfills EU RoHS substance requirements	Yes, No exemptions
---	--------------------

### China RoHS

Environment friendly use period (EFUP)	EFUP-E
	No hazardous substances above the limits

### EU REACH SVHC

REACH candidate substance (CAS No.)	No substance above 0.1 wt%
-------------------------------------	----------------------------

### EF3.1 Climate Change

CO2e kg	0.838 kg CO2e
---------	---------------

Phoenix Contact 2026 © - all rights reserved  
<https://www.phoenixcontact.com>

Phoenix Contact USA  
586 Fulling Mill Road  
Middletown, PA 17057, United States  
(+717) 944-1300  
[info@phoenixcon.com](mailto:info@phoenixcon.com)