

EB 3-31/PT - Insertion bridge

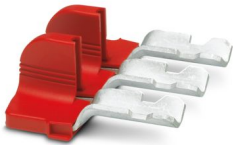


3215058

<https://www.phoenixcontact.com/us/products/3215058>

Please be informed that the data shown in this PDF document is generated from our online catalog. Please find the complete data in the user documentation. Our general terms of use for downloads are valid.

Insertion bridge, pitch: 31 mm, number of positions: 3, nominal current: 232 A, length: 78 mm, color: red



Commercial data

Item number	3215058
Packing unit	5 pc
Minimum order quantity	5 pc
Sales key	BE29
Product key	BE2Z2X
GTIN	4046356903561
Weight per piece (including packing)	109 g
Weight per piece (excluding packing)	9.99 g
Customs tariff number	85366990
Country of origin	PL

EB 3-31/PT - Insertion bridge



3215058

<https://www.phoenixcontact.com/us/products/3215058>

Technical data

Product properties

Product type	Insertion bridge
Number of positions	3
Pitch	31 mm

Electrical properties

Maximum load current	232 A
----------------------	-------

Connection data

Maximum load current	232 A
----------------------	-------

Dimensions

Width	85.7 mm
Height	78.4 mm
Depth	36.7 mm
Length	78.4 mm
Pitch	31 mm

Material specifications

Color	red (RAL 3001)
Material	Metal
Flammability rating according to UL 94	V0
Coating	tin-plated
Insulating material	PA

EB 3-31/PT - Insertion bridge



3215058

<https://www.phoenixcontact.com/us/products/3215058>

Classifications

ECLASS

ECLASS-13.0	27250303
ECLASS-15.0	27250303

ETIM

ETIM 10.0	EC000489
-----------	----------

UNSPSC

UNSPSC 21.0	39121400
-------------	----------

EB 3-31/PT - Insertion bridge



3215058

<https://www.phoenixcontact.com/us/products/3215058>

Environmental product compliance

EU RoHS

Fulfills EU RoHS substance requirements	Yes, No exemptions
---	--------------------

China RoHS

Environment friendly use period (EFUP)	EFUP-E
	No hazardous substances above the limits

EU REACH SVHC

REACH candidate substance (CAS No.)	No substance above 0.1 wt%
-------------------------------------	----------------------------

EF3.1 Climate Change

CO2e kg	1.825 kg CO2e
---------	---------------

Phoenix Contact 2026 © - all rights reserved
<https://www.phoenixcontact.com>

Phoenix Contact USA
586 Fulling Mill Road
Middletown, PA 17057, United States
(+717) 944-1300
info@phoenixcon.com