

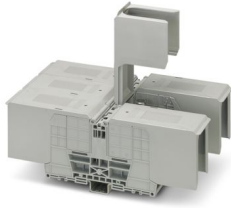
RBO 16-3L-HC - Bolt connection terminal block



3076073

<https://www.phoenixcontact.com/us/products/3076073>

Please be informed that the data shown in this PDF document is generated from our online catalog. Please find the complete data in the user documentation. Our general terms of use for downloads are valid.



Bolt connection terminal block, nom. voltage: 1500 V, nominal current: 520 A, number of connections: 6, number of positions: 3, connection method: Bolt connection, Rated cross section: 300 mm², mounting type: NS 35/7,5, NS 35/15, direct screw connection, color: gray

Commercial data

Item number	3076073
Packing unit	1 pc
Note	Made to order (non-returnable)
Sales key	BE44
Product key	BE4412
GTIN	4046356653213
Weight per piece (including packing)	2,000 g
Weight per piece (excluding packing)	1,977.1 g
Customs tariff number	85369010
Country of origin	CN

RBO 16-3L-HC - Bolt connection terminal block



3076073

<https://www.phoenixcontact.com/us/products/3076073>

Technical data

Product properties

Product type	Bolt connection terminal block
Number of positions	3
Pitch	54.8 mm
Number of connections	6
Number of rows	1
Potentials	3

Insulation characteristics

Overvoltage category	III
Degree of pollution	3

Electrical properties

Rated surge voltage	8 kV
---------------------	------

Connection data

Number of connections per level	6
Nominal cross section	300 mm ²
Connection method	Bolt connection
Stripping length	The stripping length depends on the specification provided by the cable lug manufacturer.
Connection in acc. with standard	IEC 60947-7-1
Nominal cross section	300 mm ²
Nominal current	520 A
Maximum load current	520 A (At a conductor cross-section of 300 mm ²)
Nominal voltage	1500 V

Cable lug connection DIN 46234:1980-03

Connection in acc. with standard	DIN 46234:1980-03
Cross section	25 mm ² ... 240 mm ²
Cross section range AWG	4 ... 500 kcmil (converted acc. to IEC)
Hole diameter	17 mm
Width	38 mm
Bolt diameter	16 mm
Screw thread	M16
Tightening torque	25 ... 35 Nm
Connection in acc. with standard	DIN 46235:1983-07
Cross section	50 mm ² ... 300 mm ²
Cross section range AWG	0 ... 500 kcmil (converted acc. to IEC)
Hole diameter	17 mm
Width	48 mm
Bolt diameter	16 mm
Screw thread	M16

RBO 16-3L-HC - Bolt connection terminal block

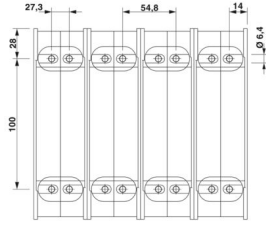


3076073

<https://www.phoenixcontact.com/us/products/3076073>

Tightening torque	25 ... 35 Nm
-------------------	--------------

Dimensions

Dimensional drawing	
Width	164.4 mm
Pitch	54.8 mm

Material specifications

Color	gray
Flammability rating according to UL 94	V0
Insulating material group	I
Insulating material	PA

Mechanical properties

Mechanical data	
Open side panel	No

Standards and regulations

Connection in acc. with standard	IEC 60947-7-1
----------------------------------	---------------

Mounting

Mounting type	NS 35/7,5
	NS 35/15
	direct screw connection

RBO 16-3L-HC - Bolt connection terminal block

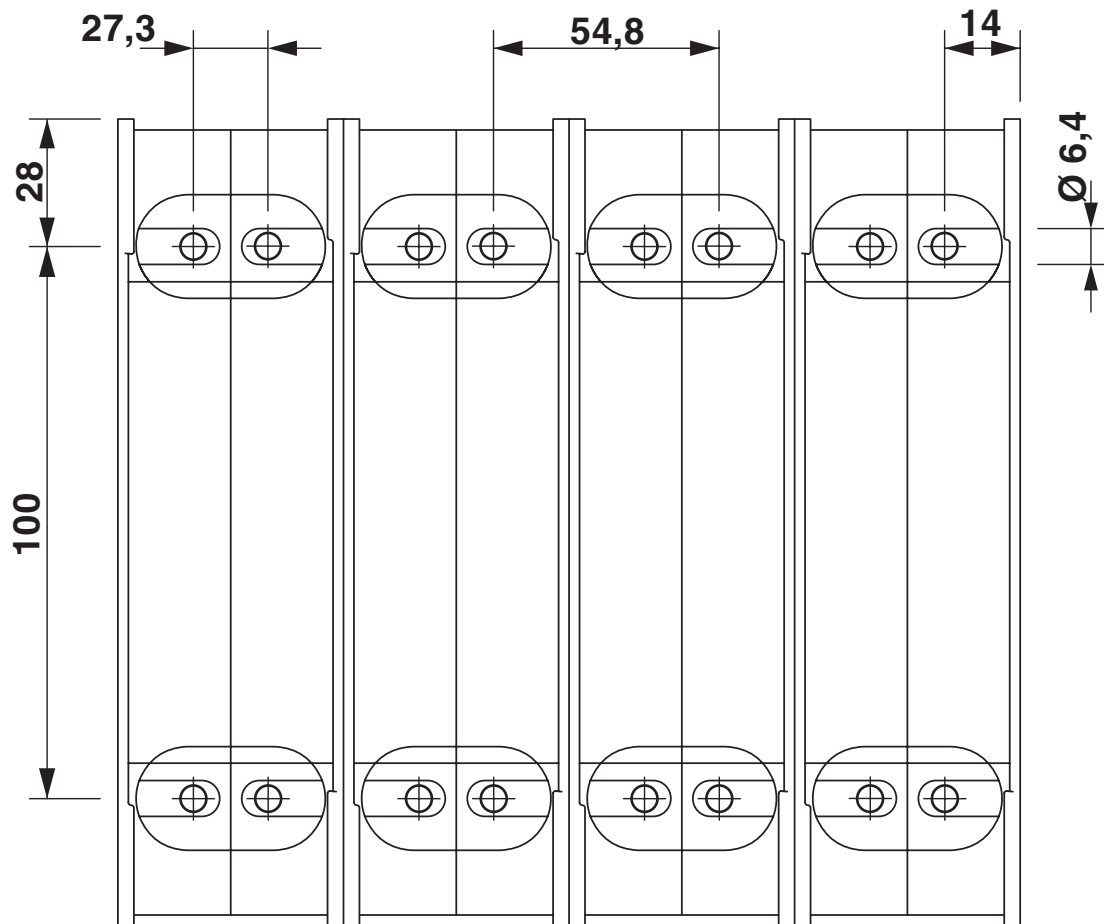


3076073

<https://www.phoenixcontact.com/us/products/3076073>

Drawings

Dimensional drawing



RBO 16-3L-HC - Bolt connection terminal block



3076073

<https://www.phoenixcontact.com/us/products/3076073>

Environmental product compliance

EU RoHS

Fulfills EU RoHS substance requirements	Yes, No exemptions
---	--------------------

China RoHS

Environment friendly use period (EFUP)	EFUP-E
	No hazardous substances above the limits

EU REACH SVHC

REACH candidate substance (CAS No.)	No substance above 0.1 wt%
-------------------------------------	----------------------------

Phoenix Contact 2026 © - all rights reserved
<https://www.phoenixcontact.com>

Phoenix Contact USA
586 Fulling Mill Road
Middletown, PA 17057, United States
(+717) 944-1300
info@phoenixcon.com