

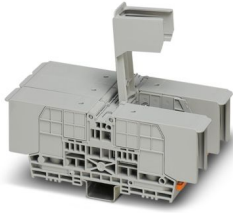
RBO 8-3L-HC - Bolt connection terminal block



3076044

<https://www.phoenixcontact.com/us/products/3076044>

Please be informed that the data shown in this PDF document is generated from our online catalog. Please find the complete data in the user documentation. Our general terms of use for downloads are valid.



Bolt connection terminal block, nom. voltage: 1500 V, nominal current: 192 A, number of connections: 6, connection method: Bolt connection, Rated cross section: 70 mm², 1 level, mounting type: NS 35/7,5, NS 35/15, direct screw connection, color: gray

Commercial data

Item number	3076044
Packing unit	1 pc
Note	Made to order (non-returnable)
Sales key	BE44
Product key	BE4412
GTIN	4046356653183
Weight per piece (including packing)	565.85 g
Weight per piece (excluding packing)	492.31 g
Customs tariff number	85369010
Country of origin	CN

RBO 8-3L-HC - Bolt connection terminal block



3076044

<https://www.phoenixcontact.com/us/products/3076044>

Technical data

Product properties

Product type	Bolt connection terminal block
Pitch	29 mm
Number of connections	6
Number of rows	1
Potentials	3

Insulation characteristics

Overvoltage category	III
Degree of pollution	3

Electrical properties

Rated surge voltage	8 kV
---------------------	------

Connection data

Number of connections per level	6
Nominal cross section	70 mm ²

1 level

Connection method	Bolt connection
Stripping length	The stripping length depends on the specification provided by the cable lug manufacturer.
Connection in acc. with standard	IEC 60947-7-1
Nominal cross section	70 mm ²
Nominal current	192 A
Maximum load current	192 A (in case of a 70 mm ² conductor cross-section, the maximum load current must not be exceeded by the total current of all connected conductors.)
Nominal voltage	1500 V

Cable lug connection DIN 46234:1980-03

Connection in acc. with standard	DIN 46234:1980-03
Cross section	2.5 mm ² ... 70 mm ²
Cross section range AWG	(converted acc. to IEC)
Hole diameter	8.4 mm
Width	22 mm
Bolt diameter	8 mm
Screw thread	M8
Tightening torque	6 ... 12 Nm
Connection in acc. with standard	DIN 46235:1983-07
Cross section	16 mm ² ... 70 mm ²
Cross section range AWG	(converted acc. to IEC)
Hole diameter	8.4 mm
Width	24 mm

RBO 8-3L-HC - Bolt connection terminal block

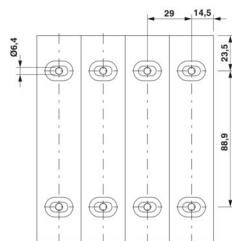


3076044

<https://www.phoenixcontact.com/us/products/3076044>

Bolt diameter	8 mm
Screw thread	M8
Tightening torque	6 ... 12 Nm
Connection in acc. with standard	DIN 46237:1970-07
Cross section	2.5 mm ² ... 6 mm ²
Cross section range AWG	(converted acc. to IEC)
Hole diameter	8.4 mm
Width	14 mm
Bolt diameter	8 mm
Screw thread	M8
Tightening torque	6 ... 12 Nm
Identification color of ring cable lugs : blue	2.5 mm ²
Identification color of ring cable lugs : yellow	6 mm ²

Dimensions

Dimensional drawing	
Width	87 mm
Height	66 mm
Pitch	29 mm

Material specifications

Color	gray
Flammability rating according to UL 94	V0
Insulating material group	I
Insulating material	PA
Static insulating material application in cold	-60 °C
Temperature index of insulation material (DIN EN 60216-1 (VDE 0304-21))	130 °C
Relative insulation material temperature index (Elec., UL 746 B)	130 °C
Fire protection for rail vehicles (DIN EN 45545-2) R22	HL 1 - HL 3
Fire protection for rail vehicles (DIN EN 45545-2) R23	HL 1 - HL 3
Fire protection for rail vehicles (DIN EN 45545-2) R24	HL 1 - HL 3
Fire protection for rail vehicles (DIN EN 45545-2) R26	HL 1 - HL 3
Calorimetric heat release NFPA 130 (ASTM E 1354)	28 MJ/kg
Surface flammability NFPA 130 (ASTM E 162)	passed
Specific optical density of smoke NFPA 130 (ASTM E 662)	passed
Smoke gas toxicity NFPA 130 (SMP 800C)	passed

RBO 8-3L-HC - Bolt connection terminal block



3076044

<https://www.phoenixcontact.com/us/products/3076044>

Electrical tests

Surge voltage test

Test voltage setpoint	9.8 kV
Result	Test passed

Temperature-rise test

Requirement temperature-rise test	Increase in temperature ≤ 45 K
Result	Test passed
Short-time withstand current 70 mm ²	8.4 kA
Result	Test passed

Power-frequency withstand voltage

Test voltage setpoint	2.2 kV
Result	Test passed

Mechanical properties

Mechanical data

Open side panel	No
-----------------	----

Mechanical tests

Mechanical strength

Result	Test passed
--------	-------------

Attachment on the carrier

DIN rail/fixing support	NS 35
Test force setpoint	10 N
Result	Test passed

Environmental and real-life conditions

Needle-flame test

Time of exposure	30 s
Result	Test passed

Oscillation/broadband noise

Specification	DIN EN 50155 (VDE 0115-200):2008-03
Spectrum	Long life test category 1, class B, body mounted
Frequency	$f_1 = 5$ Hz to $f_2 = 150$ Hz
ASD level	1.857 (m/s ²)/Hz
Acceleration	0.8g
Test duration per axis	5 h
Test directions	X-, Y- and Z-axis
Result	Test passed

Shocks

RBO 8-3L-HC - Bolt connection terminal block



3076044

<https://www.phoenixcontact.com/us/products/3076044>

Specification	DIN EN 50155 (VDE 0115-200):2008-03
Pulse shape	Half-sine
Acceleration	5g
Shock duration	30 ms
Number of shocks per direction	3
Test directions	X-, Y- and Z-axis (pos. and neg.)
Result	Test passed

Standards and regulations

Connection in acc. with standard	IEC 60947-7-1
----------------------------------	---------------

Mounting

Mounting type	NS 35/7,5
	NS 35/15
	direct screw connection

RBO 8-3L-HC - Bolt connection terminal block

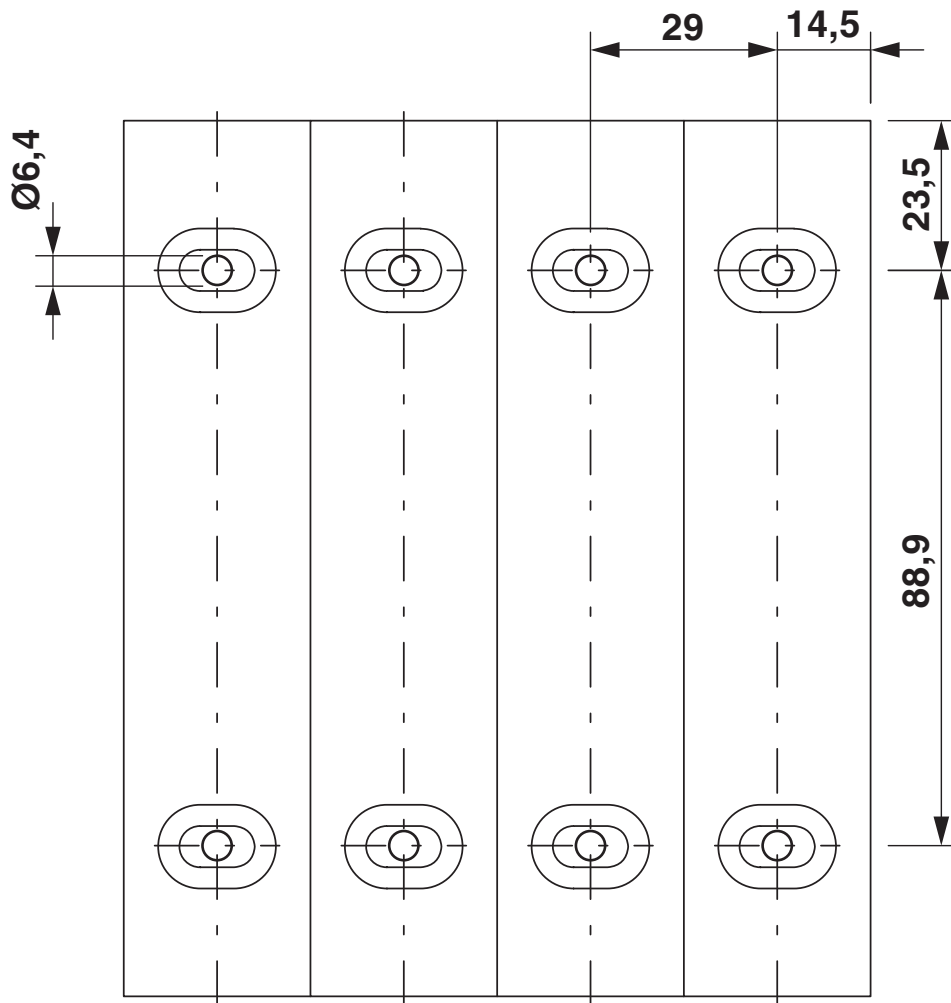


3076044

<https://www.phoenixcontact.com/us/products/3076044>

Drawings

Dimensional drawing



RBO 8-3L-HC - Bolt connection terminal block



3076044

<https://www.phoenixcontact.com/us/products/3076044>

Circuit diagram



RBO 8-3L-HC - Bolt connection terminal block



3076044

<https://www.phoenixcontact.com/us/products/3076044>

Environmental product compliance

EU RoHS

Fulfills EU RoHS substance requirements	Yes, No exemptions
---	--------------------

China RoHS

Environment friendly use period (EFUP)	EFUP-E
	No hazardous substances above the limits

EU REACH SVHC

REACH candidate substance (CAS No.)	No substance above 0.1 wt%
-------------------------------------	----------------------------

Phoenix Contact 2026 © - all rights reserved
<https://www.phoenixcontact.com>

Phoenix Contact USA
586 Fulling Mill Road
Middletown, PA 17057, United States
(+717) 944-1300
info@phoenixcon.com