

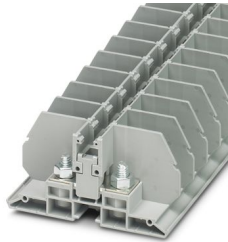
RBO 6-F - Bolt connection terminal block



3075935

<https://www.phoenixcontact.com/us/products/3075935>

Please be informed that the data shown in this PDF document is generated from our online catalog. Please find the complete data in the user documentation. Our general terms of use for downloads are valid.



Bolt connection terminal block, nom. voltage: 800 V, nominal current: 125 A, number of connections: 2, connection method: Bolt connection, Rated cross section: 35 mm², 1 level, mounting type: direct screw connection, color: gray

Your advantages

- Compact connection with ring and fork-type cable lugs
- Direct mounting in control boxes
- Bridge shaft for potential distribution using standard screw bridges
- Isolator bridge bar for switchable cross connections

Commercial data

Item number	3075935
Packing unit	40 pc
Minimum order quantity	40 pc
Sales key	BE44
Product key	BE4415
GTIN	4046356535892
Weight per piece (including packing)	34.75 g
Weight per piece (excluding packing)	34.261 g
Customs tariff number	85369010
Country of origin	IN

RBO 6-F - Bolt connection terminal block



3075935

<https://www.phoenixcontact.com/us/products/3075935>

Technical data

Product properties

Product type	Bolt connection terminal block
Product family	RBO
Pitch	17 mm
Number of connections	2
Number of rows	1
Potentials	1

Insulation characteristics

Overvoltage category	III
Degree of pollution	3

Electrical properties

Rated surge voltage	8 kV
Maximum power dissipation for nominal condition	4.06 W

Connection data

Number of connections per level	2
Nominal cross section	35 mm ²

1 level

Connection method	Bolt connection
Stripping length	The stripping length depends on the specification provided by the cable lug manufacturer.
Connection in acc. with standard	IEC 60947-7-1
Nominal cross section	35 mm ²
Nominal current	125 A
Maximum load current	125 A (with 35 mm ² conductor cross-section)
Nominal voltage	800 V

Cable lug connection DIN 46234:1980-03

Connection in acc. with standard	DIN 46234:1980-03
Cross section	6 mm ² ... 35 mm ²
Cross section range AWG	10 ... 2 (converted acc. to IEC)
Hole diameter	6.5 mm
Width	15 mm
Bolt diameter	6 mm
Screw thread	M6
Tightening torque	3.2 ... 3.7 Nm
Connection in acc. with standard	DIN 46237:1970-07
Cross section	2.5 mm ² ... 6 mm ²
Cross section range AWG	14 ... 10 (converted acc. to IEC)
Hole diameter	6.5 mm

RBO 6-F - Bolt connection terminal block



3075935

<https://www.phoenixcontact.com/us/products/3075935>

Width	11 mm
Bolt diameter	6 mm
Screw thread	M6
Tightening torque	3.2 ... 3.7 Nm
Identification color of ring cable lugs : blue	2.5 mm ²
Identification color of ring cable lugs : yellow	6 mm ²

Dimensions

Width	17 mm
End cover width	2.2 mm
Height	80.8 mm
Depth	39.7 mm
Pitch	17 mm

Material specifications

Color	gray (RAL 7042)
Flammability rating according to UL 94	V0
Insulating material group	I
Insulating material	PA
Static insulating material application in cold	-60 °C
Temperature index of insulation material (DIN EN 60216-1 (VDE 0304-21))	130 °C
Relative insulation material temperature index (Elec., UL 746 B)	130 °C
Fire protection for rail vehicles (DIN EN 45545-2) R22	HL 1 - HL 3
Fire protection for rail vehicles (DIN EN 45545-2) R23	HL 1 - HL 3
Fire protection for rail vehicles (DIN EN 45545-2) R24	HL 1 - HL 3
Fire protection for rail vehicles (DIN EN 45545-2) R26	HL 1 - HL 3
Calorimetric heat release NFPA 130 (ASTM E 1354)	28 MJ/kg
Surface flammability NFPA 130 (ASTM E 162)	passed
Specific optical density of smoke NFPA 130 (ASTM E 662)	passed
Smoke gas toxicity NFPA 130 (SMP 800C)	passed

Electrical tests

Surge voltage test

Test voltage setpoint	9.8 kV
Result	Test passed

Temperature-rise test

Requirement temperature-rise test	Increase in temperature \leq 45 K
Result	Test passed
Short-time withstand current 35 mm ²	4.2 kA
Result	Test passed

Power-frequency withstand voltage

Test voltage setpoint	2 kV
-----------------------	------

RBO 6-F - Bolt connection terminal block



3075935

<https://www.phoenixcontact.com/us/products/3075935>

Result	Test passed
--------	-------------

Mechanical properties

Mechanical data

Open side panel	No
-----------------	----

Mechanical tests

Mechanical strength

Result	Test passed
--------	-------------

Attachment on the carrier

Test force setpoint	10 N
Result	Test passed

Environmental and real-life conditions

Needle-flame test

Time of exposure	30 s
Result	Test passed

Oscillation/broadband noise

Specification	DIN EN 50155 (VDE 0115-200):2008-03
Spectrum	Long life test category 1, class B, body mounted
Frequency	$f_1 = 5 \text{ Hz}$ to $f_2 = 150 \text{ Hz}$
ASD level	1.857 (m/s ²)/Hz
Acceleration	0.8g
Test duration per axis	5 h
Test directions	X-, Y- and Z-axis
Result	Test passed

Shocks

Specification	DIN EN 50155 (VDE 0115-200):2008-03
Pulse shape	Half-sine
Acceleration	5g
Shock duration	30 ms
Number of shocks per direction	3
Test directions	X-, Y- and Z-axis (pos. and neg.)
Result	Test passed

Ambient conditions

Ambient temperature (operation)	-60 °C ... 110 °C (Operating temperature range incl. self-heating; for max. short-term operating temperature, see RTI Elec.)
Ambient temperature (storage/transport)	-25 °C ... 60 °C (for a short time, not exceeding 24 h, -60 °C to +70 °C)
Ambient temperature (assembly)	-5 °C ... 70 °C
Ambient temperature (actuation)	-5 °C ... 70 °C

RBO 6-F - Bolt connection terminal block



3075935

<https://www.phoenixcontact.com/us/products/3075935>

Permissible humidity (operation)	20 % ... 90 %
Permissible humidity (storage/transport)	30 % ... 70 %

Standards and regulations

Connection in acc. with standard	IEC 60947-7-1
----------------------------------	---------------

Mounting

Mounting type	direct screw connection
---------------	-------------------------

RBO 6-F - Bolt connection terminal block

3075935

<https://www.phoenixcontact.com/us/products/3075935>



Drawings

Circuit diagram



RBO 6-F - Bolt connection terminal block



3075935

<https://www.phoenixcontact.com/us/products/3075935>

Classifications

ECLASS

ECLASS-13.0

27250101

ETIM

ETIM 9.0

EC000897

UNSPSC

UNSPSC 21.0

39121400

RBO 6-F - Bolt connection terminal block



3075935

<https://www.phoenixcontact.com/us/products/3075935>

Environmental product compliance

EU RoHS

Fulfills EU RoHS substance requirements	Yes, No exemptions
---	--------------------

China RoHS

Environment friendly use period (EFUP)	EFUP-E
	No hazardous substances above the limits

EU REACH SVHC

REACH candidate substance (CAS No.)	No substance above 0.1 wt%
-------------------------------------	----------------------------

Phoenix Contact 2026 © - all rights reserved
<https://www.phoenixcontact.com>

Phoenix Contact USA
586 Fulling Mill Road
Middletown, PA 17057, United States
(+717) 944-1300
info@phoenixcon.com