

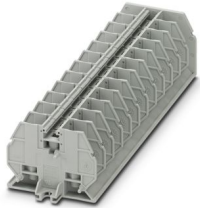
# RBO 5-F/12 - Bolt connection terminal block



3059252

<https://www.phoenixcontact.com/us/products/3059252>

Please be informed that the data shown in this PDF document is generated from our online catalog. Please find the complete data in the user documentation. Our general terms of use for downloads are valid.



Feed-through terminal block with bolt connection method, cross section: 0.1 - 6 mm<sup>2</sup>, AWG: 26 - 10, width 13 mm, color: gray

## Your advantages

- Direct mounting in control boxes
- Compact connection with ring and fork-type cable lugs
- Bridge shaft for potential distribution using standard screw bridges
- Isolator bridge bar for switchable cross connections

## Commercial data

Item number	3059252
Packing unit	1 pc
Minimum order quantity	1 pc
Sales key	BE44
Product key	BE4415
GTIN	4046356534871
Weight per piece (including packing)	255.8 g
Weight per piece (excluding packing)	255.8 g
Customs tariff number	85369010
Country of origin	IN

# RBO 5-F/12 - Bolt connection terminal block



3059252

<https://www.phoenixcontact.com/us/products/3059252>

## Technical data

### Product properties

Product type	Bolt connection terminal block
Pitch	13 mm
Number of connections	24
Number of rows	1
Potentials	12

### Insulation characteristics

Overvoltage category	III
Degree of pollution	3

### Electrical properties

Rated surge voltage	8 kV
Maximum power dissipation for nominal condition	1.82 W

### Connection data

Number of connections per level	24
Nominal cross section	10 mm <sup>2</sup>

#### 1 level

Connection method	Bolt connection
Stripping length	The stripping length depends on the specification provided by the cable lug manufacturer.
Connection in acc. with standard	IEC 60947-7-1
Nominal cross section	10 mm <sup>2</sup>
Nominal current	57 A
Maximum load current	57 A (with 10 mm <sup>2</sup> conductor cross-section)
Nominal voltage	1000 V

#### Cable lug connection DIN 46234:1980-03

Connection in acc. with standard	DIN 46234:1980-03
Cross section	0.1 mm <sup>2</sup> ... 10 mm <sup>2</sup>
Cross section range AWG	26 ... 8 (converted acc. to IEC)
Hole diameter	5.3 mm
Width	10 mm
Bolt diameter	5 mm
Screw thread	M5
Tightening torque	2 ... 2.2 Nm
Connection in acc. with standard	DIN 46237:1970-07
Cross section	0.5 mm <sup>2</sup> ... 6 mm <sup>2</sup>
Additional text	Cable lug for 0.5 mm <sup>2</sup> ... 1.5 mm <sup>2</sup> and 1.5 mm <sup>2</sup> ... 2.5 mm <sup>2</sup> without shrink tubing only permitted up to 800 V.
Cross section range AWG	20 ... 10 (converted acc. to IEC)

# RBO 5-F/12 - Bolt connection terminal block



3059252

<https://www.phoenixcontact.com/us/products/3059252>

Hole diameter	5.3 mm
Width	10 mm
Bolt diameter	5 mm
Tightening torque	2 ... 2.2 Nm
Identification color of ring cable lugs : red	1 mm <sup>2</sup>
Identification color of ring cable lugs : blue	2.5 mm <sup>2</sup>
Identification color of ring cable lugs : yellow	6 mm <sup>2</sup>

## Dimensions

Width	173.7 mm
Height	53.3 mm
Depth	37 mm
Hole diameter	5.2 mm
Pitch	13 mm

## Material specifications

Color	gray (RAL 7042)
Flammability rating according to UL 94	V0
Insulating material group	I
Insulating material	PA
Static insulating material application in cold	-60 °C
Temperature index of insulation material (DIN EN 60216-1 (VDE 0304-21))	130 °C
Relative insulation material temperature index (Elec., UL 746 B)	130 °C
Fire protection for rail vehicles (DIN EN 45545-2) R22	HL 1 - HL 3
Fire protection for rail vehicles (DIN EN 45545-2) R23	HL 1 - HL 3
Fire protection for rail vehicles (DIN EN 45545-2) R24	HL 1 - HL 3
Fire protection for rail vehicles (DIN EN 45545-2) R26	HL 1 - HL 3
Calorimetric heat release NFPA 130 (ASTM E 1354)	28 MJ/kg
Surface flammability NFPA 130 (ASTM E 162)	passed
Specific optical density of smoke NFPA 130 (ASTM E 662)	passed
Smoke gas toxicity NFPA 130 (SMP 800C)	passed

## Electrical tests

### Surge voltage test

Result	Test passed
--------	-------------

### Temperature-rise test

Requirement temperature-rise test	Increase in temperature $\leq$ 45 K
Result	Test passed
Short-time withstand current 10 mm <sup>2</sup>	1.2 kA
Result	Test passed

### Power-frequency withstand voltage

Test voltage setpoint	2 kV
-----------------------	------

# RBO 5-F/12 - Bolt connection terminal block



3059252

<https://www.phoenixcontact.com/us/products/3059252>

Result	Test passed
--------	-------------

## Mechanical properties

### Mechanical data

Open side panel	No
-----------------	----

## Mechanical tests

### Mechanical strength

Result	Test passed
--------	-------------

## Environmental and real-life conditions

### Needle-flame test

Time of exposure	30 s
Result	Test passed

### Oscillation/broadband noise

Specification	DIN EN 50155 (VDE 0115-200):2018-05
Spectrum	Long life test category 2, bogie-mounted
Frequency	$f_1 = 5 \text{ Hz}$ to $f_2 = 250 \text{ Hz}$
ASD level	$6.12 \text{ (m/s}^2\text{)}^2\text{/Hz}$
Acceleration	3.12g
Test duration per axis	5 h
Test directions	X-, Y- and Z-axis

### Shocks

Specification	DIN EN 50155 (VDE 0115-200):2008-03
Pulse shape	Half-sine
Acceleration	30g
Shock duration	18 ms
Number of shocks per direction	3
Test directions	X-, Y- and Z-axis (pos. and neg.)

### Ambient conditions

Ambient temperature (operation)	-60 °C ... 110 °C (Operating temperature range incl. self-heating; for max. short-term operating temperature, see RTI Elec.)
Ambient temperature (storage/transport)	-25 °C ... 60 °C (for a short time, not exceeding 24 h, -60 °C to +70 °C)
Ambient temperature (assembly)	-5 °C ... 70 °C
Ambient temperature (actuation)	-5 °C ... 70 °C
Permissible humidity (operation)	20 % ... 90 %
Permissible humidity (storage/transport)	30 % ... 70 %

## Standards and regulations

Connection in acc. with standard	IEC 60947-7-1
----------------------------------	---------------

# RBO 5-F/12 - Bolt connection terminal block



3059252

<https://www.phoenixcontact.com/us/products/3059252>

## Mounting

Mounting type	direct screw connection
---------------	-------------------------

# RBO 5-F/12 - Bolt connection terminal block



3059252

<https://www.phoenixcontact.com/us/products/3059252>

## Classifications

### ECLASS

ECLASS-13.0

27250101

### ETIM

ETIM 9.0

EC000897

### UNSPSC

UNSPSC 21.0

39121400

# RBO 5-F/12 - Bolt connection terminal block



3059252

<https://www.phoenixcontact.com/us/products/3059252>

## Environmental product compliance

### EU RoHS

Fulfills EU RoHS substance requirements	Yes, No exemptions
-----------------------------------------	--------------------

### China RoHS

Environment friendly use period (EFUP)	EFUP-E
	No hazardous substances above the limits

### EU REACH SVHC

REACH candidate substance (CAS No.)	No substance above 0.1 wt%
-------------------------------------	----------------------------

Phoenix Contact 2026 © - all rights reserved  
<https://www.phoenixcontact.com>

Phoenix Contact USA  
586 Fulling Mill Road  
Middletown, PA 17057, United States  
(+717) 944-1300  
[info@phoenixcon.com](mailto:info@phoenixcon.com)