

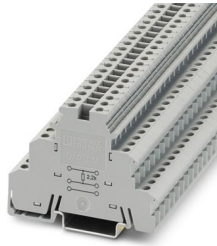
DIKD 1,5 R 2,2K/O-M - Initiator/actuator terminal block



3048771

<https://www.phoenixcontact.com/us/products/3048771>

Please be informed that the data shown in this PDF document is generated from our online catalog. Please find the complete data in the user documentation. Our general terms of use for downloads are valid.



Initiator/actuator terminal block, nom. voltage: 250 V, nominal current: 24 A, connection method: Screw connection, 1st, 2nd and 3rd level, Rated cross section: 2.5 mm², cross section: 0.2 mm² - 4 mm², mounting type: NS 35/7,5, NS 35/15, color: gray

Commercial data

| | |
|--------------------------------------|--------------------------------|
| Item number | 3048771 |
| Packing unit | 50 pc |
| Minimum order quantity | 1 pc |
| Note | Made to order (non-returnable) |
| Product key | BE1217 |
| GTIN | 4046356180283 |
| Weight per piece (including packing) | 20.86 g |
| Weight per piece (excluding packing) | 20.86 g |
| Country of origin | PL |

DIKD 1,5 R 2,2K/O-M - Initiator/actuator terminal block



3048771

<https://www.phoenixcontact.com/us/products/3048771>

Technical data

Product properties

| | |
|-----------------------|--------------------------------|
| Product type | Sensor/actuator terminal block |
| Number of connections | 6 |
| Number of rows | 3 |
| Potentials | 1 |

Insulation characteristics

| | |
|----------------------|-----|
| Overvoltage category | III |
| Degree of pollution | 3 |

Electrical properties

| | |
|---------------------|------|
| Rated surge voltage | 4 kV |
|---------------------|------|

Connection data

| | |
|---------------------------------|---------------------|
| Number of connections per level | 2 |
| Nominal cross section | 2.5 mm ² |

1st, 2nd and 3rd level

| | |
|---|---|
| Connection method | Screw connection |
| Screw thread | M3 |
| Tightening torque | 0.5 ... 0.6 Nm |
| Stripping length | 8 mm |
| Internal cylindrical gage | A3 |
| Connection in acc. with standard | IEC 60947-7-1 |
| Conductor cross-section rigid | 0.2 mm ² ... 4 mm ² |
| Cross section AWG | 24 ... 12 (converted acc. to IEC) |
| Conductor cross-section flexible | 0.2 mm ² ... 2.5 mm ² |
| Conductor cross-section, flexible [AWG] | 24 ... 14 (converted acc. to IEC) |
| Conductor cross-section flexible (ferrule without plastic sleeve) | 0.25 mm ² ... 2.5 mm ² |
| Flexible conductor cross-section (ferrule with plastic sleeve) | 0.25 mm ² ... 2.5 mm ² |
| Cross-section with insertion bridge, rigid | 4 mm ² |
| Cross-section with insertion bridge, flexible | 2.5 mm ² |
| 2 conductors with same cross section, rigid | 0.2 mm ² ... 1 mm ² |
| 2 conductors with same cross section, flexible | 0.2 mm ² ... 1 mm ² |
| 2 conductors with same cross section, flexible, with ferrule without plastic sleeve | 0.25 mm ² ... 1 mm ² |
| 2 conductors with the same cross section, flexible, with TWIN ferrule with plastic sleeve | 0.5 mm ² ... 1 mm ² |
| Nominal cross section | 2.5 mm ² |
| Nominal current | 24 A |
| Maximum load current | 32 A (with 4 mm ² conductor cross-section) |
| Nominal voltage | 250 V |

DIKD 1,5 R 2,2K/O-M - Initiator/actuator terminal block



3048771

<https://www.phoenixcontact.com/us/products/3048771>

Dimensions

| | |
|-------|--------|
| Width | 6.2 mm |
|-------|--------|

Material specifications

| | |
|--|------|
| Color | gray |
| Flammability rating according to UL 94 | V2 |
| Insulating material group | I |
| Insulating material | PA |

Mechanical properties

Mechanical data

| | |
|-----------------|----|
| Open side panel | No |
|-----------------|----|

Standards and regulations

| | |
|----------------------------------|---------------|
| Connection in acc. with standard | IEC 60947-7-1 |
|----------------------------------|---------------|

Mounting

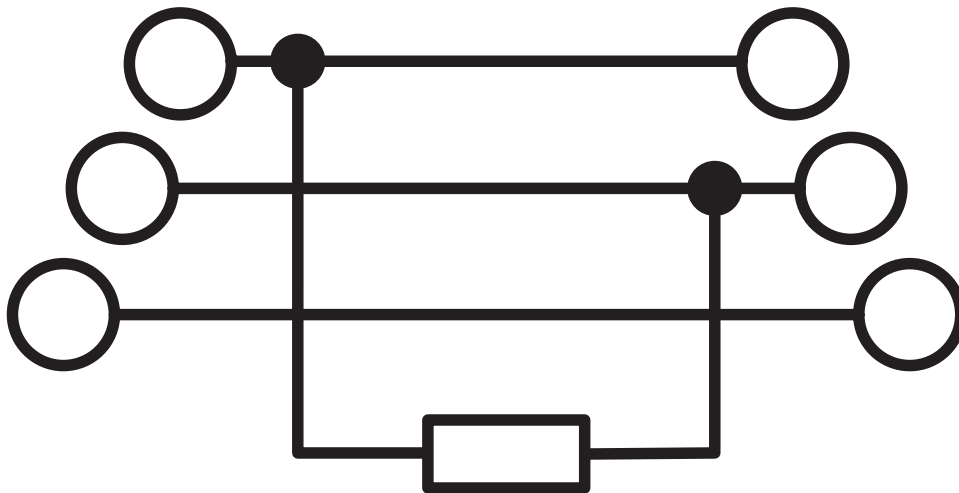
| | |
|---------------|-----------|
| Mounting type | NS 35/7,5 |
| | NS 35/15 |

3048771

<https://www.phoenixcontact.com/us/products/3048771>

Drawings

Circuit diagram



Phoenix Contact 2026 © - all rights reserved
<https://www.phoenixcontact.com>

Phoenix Contact USA
586 Fulling Mill Road
Middletown, PA 17057, United States
(+717) 944-1300
info@phoenixcon.com