

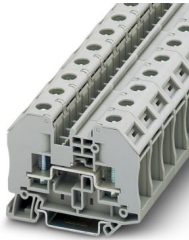
RT 5-NICR/NI - Thermoelectric voltage terminal block pair



3048106

<https://www.phoenixcontact.com/us/products/3048106>

Please be informed that the data shown in this PDF document is generated from our online catalog. Please find the complete data in the user documentation. Our general terms of use for downloads are valid.



Thermoelectric voltage terminal block with bolt connection technology, cross section: 0.1 - 6 mm², AWG: 26 - 10, width: 16.3 mm, color: gray

The figure shows a version of the article

Commercial data

| | |
|--------------------------------------|--------------------------------|
| Item number | 3048106 |
| Packing unit | 1 pc |
| Note | Made to order (non-returnable) |
| Sales key | BE43 |
| Product key | BE4313 |
| GTIN | 4046356966948 |
| Weight per piece (including packing) | 99.99 g |
| Weight per piece (excluding packing) | 99.99 g |
| Customs tariff number | 85369010 |
| Country of origin | CN |

RT 5-NICR/NI - Thermoelectric voltage terminal block pair



3048106

<https://www.phoenixcontact.com/us/products/3048106>

Technical data

Notes

| | |
|---------|---|
| General | Note: the BE-RT... path extension is to be used for non-insulated cable lugs (see accessories). |
| General | Unit pack: 2 pcs. |

Product properties

| | |
|-----------------------|--------------------------------|
| Product type | Bolt connection terminal block |
| Number of positions | 2 |
| Number of connections | 4 |
| Number of rows | 1 |
| Potentials | 2 |

Insulation characteristics

| | |
|----------------------|-----|
| Overvoltage category | III |
| Degree of pollution | 3 |

Electrical properties

| | |
|---------------------|------|
| Rated surge voltage | 8 kV |
|---------------------|------|

Connection data

| | |
|---------------------------------|-------------------|
| Number of connections per level | 4 |
| Nominal cross section | 1 mm ² |
| Rated cross section AWG | 16 |

1 level

| | |
|--|---|
| Connection method | Bolt connection |
| Stripping length | The stripping length depends on the specification provided by the cable lug manufacturer. |
| Connection in acc. with standard | IEC 60947-7-1 |
| Flexible conductor cross-section (ferrule with plastic sleeve) | 0.5 mm ² ... 1 mm ² |
| Nominal cross section | 1 mm ² |
| Nominal current | 1 A |
| Maximum load current | 1 A |
| Nominal voltage | 50 mV |

Cable lug connection DIN 46234:1980-03

| | |
|----------------------------------|---|
| Connection in acc. with standard | DIN 46234:1980-03 |
| Cross section | 0.5 mm ² ... 1 mm ² |
| Cross section range AWG | 20 ... 16 (converted acc. to IEC) |
| Hole diameter | 5.3 mm |
| Width | 10 mm |
| Bolt diameter | 5 mm |
| Screw thread | M5 |

RT 5-NICR/NI - Thermoelectric voltage terminal block pair



3048106

<https://www.phoenixcontact.com/us/products/3048106>

| | |
|-------------------|--------------|
| Tightening torque | 2.5 ... 3 Nm |
|-------------------|--------------|

Dimensions

| | |
|-----------------|---------|
| Width | 32.6 mm |
| End cover width | 2.2 mm |

Material specifications

| | |
|---|-------------|
| Color | gray |
| Flammability rating according to UL 94 | V0 |
| Insulating material group | I |
| Insulating material | PA |
| Static insulating material application in cold | -60 °C |
| Temperature index of insulation material (DIN EN 60216-1 (VDE 0304-21)) | 130 °C |
| Relative insulation material temperature index (Elec., UL 746 B) | 130 °C |
| Fire protection for rail vehicles (DIN EN 45545-2) R22 | HL 1 - HL 3 |
| Fire protection for rail vehicles (DIN EN 45545-2) R23 | HL 1 - HL 3 |
| Fire protection for rail vehicles (DIN EN 45545-2) R24 | HL 1 - HL 3 |
| Fire protection for rail vehicles (DIN EN 45545-2) R26 | HL 1 - HL 3 |
| Calorimetric heat release NFPA 130 (ASTM E 1354) | 28 MJ/kg |
| Surface flammability NFPA 130 (ASTM E 162) | passed |
| Specific optical density of smoke NFPA 130 (ASTM E 662) | passed |
| Smoke gas toxicity NFPA 130 (SMP 800C) | passed |

Electrical tests

Surge voltage test

| | |
|-----------------------|-------------|
| Test voltage setpoint | 9.8 kV |
| Result | Test passed |

Temperature-rise test

| | |
|-----------------------------------|-------------------------------------|
| Requirement temperature-rise test | Increase in temperature \leq 45 K |
| Result | Test passed |

Power-frequency withstand voltage

| | |
|-----------------------|-------------|
| Test voltage setpoint | 2.2 kV |
| Result | Test passed |

Mechanical properties

Mechanical data

| | |
|-----------------|-----|
| Open side panel | Yes |
|-----------------|-----|

Mechanical tests

Mechanical strength

| | |
|--------|-------------|
| Result | Test passed |
|--------|-------------|

RT 5-NICR/NI - Thermoelectric voltage terminal block pair



3048106

<https://www.phoenixcontact.com/us/products/3048106>

Attachment on the carrier

| | |
|-------------------------|-------------|
| DIN rail/fixing support | NS 35 |
| Test force setpoint | 5 N |
| Result | Test passed |

Environmental and real-life conditions

Needle-flame test

| | |
|------------------|-------------|
| Time of exposure | 30 s |
| Result | Test passed |

Standards and regulations

| | |
|----------------------------------|---------------|
| Connection in acc. with standard | IEC 60947-7-1 |
|----------------------------------|---------------|

Mounting

| | |
|---------------|-----------|
| Mounting type | NS 35/7,5 |
| | NS 35/15 |

RT 5-NICR/NI - Thermoelectric voltage terminal block pair



3048106

<https://www.phoenixcontact.com/us/products/3048106>

Environmental product compliance

China RoHS

| | |
|--|---|
| Environment friendly use period (EFUP) | EFUP-50 |
| | An article-related China RoHS declaration table can be found in the download area for the respective article under "Manufacturer declaration". For all articles with EFUP-E, no China RoHS declaration table issued and required. |

EU REACH SVHC

| | |
|-------------------------------------|----------------------------|
| REACH candidate substance (CAS No.) | No substance above 0.1 wt% |
|-------------------------------------|----------------------------|

Phoenix Contact 2026 © - all rights reserved
<https://www.phoenixcontact.com>

Phoenix Contact USA
586 Fulling Mill Road
Middletown, PA 17057, United States
(+717) 944-1300
info@phoenixcon.com