

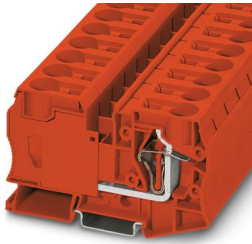
ST 35 RD - Feed-through terminal block



3035664

<https://www.phoenixcontact.com/us/products/3035664>

Please be informed that the data shown in this PDF document is generated from our online catalog. Please find the complete data in the user documentation. Our general terms of use for downloads are valid.



Feed-through terminal block, nom. voltage: 1000 V, nominal current: 125 A, number of connections: 2, connection method: Spring-cage connection, Rated cross section: 35 mm², 1 level, cross section: 2.5 mm² - 35 mm², mounting type: NS 35/7,5, NS 35/15, color: red

Commercial data

Item number	3035664
Packing unit	10 pc
Minimum order quantity	1 pc
Product key	BE2111
GTIN	4046356625111
Weight per piece (including packing)	84.12 g
Weight per piece (excluding packing)	84.12 g
Country of origin	PL

ST 35 RD - Feed-through terminal block



3035664

<https://www.phoenixcontact.com/us/products/3035664>

Technical data

Product properties

Product type	Feed-through terminal block
Number of connections	2
Number of rows	1
Potentials	1

Insulation characteristics

Overvoltage category	III
Degree of pollution	3

Electrical properties

Rated surge voltage	8 kV
Maximum power dissipation for nominal condition	4.06 W

Connection data

Number of connections per level	2
Nominal cross section	35 mm ²

1 level

Connection method	Spring-cage connection
Stripping length	25 mm
Internal cylindrical gage	A8
Connection in acc. with standard	IEC 60947-7-1
Conductor cross-section rigid	2.5 mm ² ... 35 mm ²
Cross section AWG	14 ... 2 (converted acc. to IEC)
Conductor cross-section flexible	2.5 mm ² ... 35 mm ²
Conductor cross-section, flexible [AWG]	14 ... 2 (converted acc. to IEC)
Conductor cross-section flexible (ferrule without plastic sleeve)	2.5 mm ² ... 35 mm ²
Flexible conductor cross-section (ferrule with plastic sleeve)	2.5 mm ² ... 35 mm ²
2 conductors with the same cross section, flexible, with TWIN ferrule with plastic sleeve	2.5 mm ² ... 10 mm ²
Nominal cross section	35 mm ²
Nominal current	125 A
Maximum load current	125 A (with 35 mm ² conductor cross-section)
Nominal voltage	1000 V
Note	The supply from the ST 35 terminal block to the ST 16 TWIN terminal block with the RB-ST 35 reducing bridge is single-sided only. In the case of a central supply, the D-ST 16-TWIN cover cannot be bridged via the reducing bridge.

Ex data

Rated data (ATEX/IECEx)

ST 35 RD - Feed-through terminal block



3035664

<https://www.phoenixcontact.com/us/products/3035664>

Identification	Ⓜ II 2 GD Ex eb IIC Gb
Operating temperature range	-60 °C ... 85 °C
Ex-certified accessories	1206612 SZF 3-1,0X5,5
	3022276 CLIPFIX 35-5
	3022218 CLIPFIX 35
List of bridges	Plug-in bridge / FBS 2-16 / 3005963
Bridge data	85.5 A (35 mm ²)
Ex temperature increase	40 K (118.6 A / 35 mm ²)
for bridging with bridge	690 V
Rated insulation voltage	630 V
output	(Permanent)

Ex level General

Rated voltage	690 V
Rated current	107.5 A
Maximum load current	107.5 A
Contact resistance	0.21 mΩ

Ex connection data General

Nominal cross section	35 mm ²
Rated cross section AWG	2
Connection capacity rigid	2.5 mm ² ... 35 mm ²
Connection capacity AWG	14 ... 2
Connection capacity flexible	2.5 mm ² ... 35 mm ²
Connection capacity AWG	14 ... 2

Dimensions

Width	16 mm
-------	-------

Material specifications

Color	red (RAL 3001)
Flammability rating according to UL 94	V0
Insulating material group	I
Insulating material	PA
Static insulating material application in cold	-60 °C
Temperature index of insulation material (DIN EN 60216-1 (VDE 0304-21))	125 °C
Relative insulation material temperature index (Elec., UL 746 B)	125 °C

Electrical tests

Surge voltage test

Test voltage setpoint	9.8 kV
Result	Test passed

Temperature-rise test

ST 35 RD - Feed-through terminal block



3035664

<https://www.phoenixcontact.com/us/products/3035664>

Requirement temperature-rise test	Increase in temperature ≤ 45 K
Result	Test passed
Short-time withstand current 35 mm ²	4.2 kA
Result	Test passed

Power-frequency withstand voltage

Test voltage setpoint	2.2 kV
Result	Test passed

Mechanical properties

Mechanical data

Open side panel	No
-----------------	----

Mechanical tests

Mechanical strength

Result	Test passed
--------	-------------

Attachment on the carrier

DIN rail/fixing support	NS 35
Test force setpoint	10 N
Result	Test passed

Test for conductor damage and slacking

Rotation speed	10 rpm
Revolutions	135
Conductor cross-section/weight	2.5 mm ² / 0.7 kg 35 mm ² / 6.8 kg
Result	Test passed

Environmental and real-life conditions

Aging

Temperature cycles	192
Result	Test passed

Needle-flame test

Time of exposure	30 s
Result	Test passed

Oscillation/broadband noise

Specification	DIN EN 50155 (VDE 0115-200):2008-03
Spectrum	Long life test category 2, bogie-mounted
Frequency	$f_1 = 5$ Hz to $f_2 = 250$ Hz
ASD level	6.12 (m/s ²) ² /Hz
Acceleration	3.12g
Test duration per axis	5 h

ST 35 RD - Feed-through terminal block



3035664

<https://www.phoenixcontact.com/us/products/3035664>

Test directions	X-, Y- and Z-axis
Result	Test passed

Shocks

Specification	DIN EN 50155 (VDE 0115-200):2008-03
Pulse shape	Half-sine
Acceleration	30g
Shock duration	18 ms
Number of shocks per direction	3
Test directions	X-, Y- and Z-axis (pos. and neg.)
Result	Test passed

Ambient conditions

Ambient temperature (storage/transport)	-25 °C ... 60 °C (for a short time, not exceeding 24 h, -60 °C to +70 °C)
Ambient temperature (assembly)	-5 °C ... 70 °C
Ambient temperature (actuation)	-5 °C ... 70 °C
Permissible humidity (storage/transport)	30 % ... 70 %

Standards and regulations

Connection in acc. with standard	IEC 60947-7-1
----------------------------------	---------------

Mounting

Mounting type	NS 35/7,5
	NS 35/15

ST 35 RD - Feed-through terminal block

3035664

<https://www.phoenixcontact.com/us/products/3035664>



Drawings

Circuit diagram



ST 35 RD - Feed-through terminal block



3035664

<https://www.phoenixcontact.com/us/products/3035664>

Classifications

UNSPSC

UNSPSC 21.0	39121400
-------------	----------

ST 35 RD - Feed-through terminal block



3035664

<https://www.phoenixcontact.com/us/products/3035664>

Environmental product compliance

China RoHS

Environment friendly use period (EFUP)	EFUP-E
	No hazardous substances above the limits

EU REACH SVHC

REACH candidate substance (CAS No.)	No substance above 0.1 wt%
-------------------------------------	----------------------------

Phoenix Contact 2026 © - all rights reserved
<https://www.phoenixcontact.com>

Phoenix Contact USA
586 Fulling Mill Road
Middletown, PA 17057, United States
(+717) 944-1300
info@phoenixcon.com