

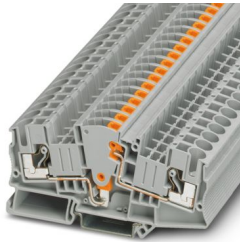
DTME 6 - Test disconnect terminal block



3034400

<https://www.phoenixcontact.com/us/products/3034400>

Please be informed that the data shown in this PDF document is generated from our online catalog. Please find the complete data in the user documentation. Our general terms of use for downloads are valid.



Test disconnect terminal block, nom. voltage: 500 V, nominal current: 30 A, number of connections: 2, connection method: Leg spring connection, Rated cross section: 6 mm², cross section: 0.5 mm² - 10 mm², mounting type: NS 35/7,5, NS 35/15, color: gray

Commercial data

| | |
|--------------------------------------|--------------------------------|
| Item number | 3034400 |
| Packing unit | 1 pc |
| Note | Made to order (non-returnable) |
| Sales key | BE22 |
| Product key | BE2233 |
| GTIN | 4046356151849 |
| Weight per piece (including packing) | 26.81 g |
| Weight per piece (excluding packing) | 26.81 g |
| Customs tariff number | 85369010 |
| Country of origin | PL |

DTME 6 - Test disconnect terminal block



3034400

<https://www.phoenixcontact.com/us/products/3034400>

Technical data

Product properties

| | |
|-----------------------|--------------------------------|
| Product type | Test disconnect terminal block |
| Number of connections | 2 |
| Number of rows | 1 |
| Potentials | 1 |

Insulation characteristics

| | |
|----------------------|-----|
| Overvoltage category | III |
| Degree of pollution | 3 |

Electrical properties

| | |
|---------------------|------|
| Rated surge voltage | 6 kV |
|---------------------|------|

Connection data

| | |
|---|--|
| Number of connections per level | 2 |
| Nominal cross section | 6 mm ² |
| Connection method | Leg spring connection |
| Stripping length | 12 mm |
| Internal cylindrical gage | A4 |
| Connection in acc. with standard | IEC 60947-7-1 |
| Conductor cross-section rigid | 0.5 mm ² ... 10 mm ² |
| Cross section AWG | 20 ... 8 (converted acc. to IEC) |
| Conductor cross-section flexible | 0.5 mm ² ... 6 mm ² |
| Conductor cross-section, flexible [AWG] | 20 ... 10 (converted acc. to IEC) |
| Conductor cross-section flexible (ferrule without plastic sleeve) | 0.5 mm ² ... 6 mm ² |
| Flexible conductor cross-section (ferrule with plastic sleeve) | 0.5 mm ² ... 6 mm ² |
| 2 conductors with the same cross section, flexible, with TWIN ferrule with plastic sleeve | 0.5 mm ² ... 1.5 mm ² |
| Nominal cross section | 6 mm ² |
| Nominal current | 30 A |
| Maximum load current | 30 A (with 10 mm ² conductor cross-section) |
| Nominal voltage | 500 V |

Dimensions

| | |
|--------|---------|
| Width | 8.2 mm |
| Height | 49.6 mm |

Material specifications

| | |
|--|------|
| Color | gray |
| Flammability rating according to UL 94 | V0 |
| Insulating material group | I |
| Insulating material | PA |

DTME 6 - Test disconnect terminal block



3034400

<https://www.phoenixcontact.com/us/products/3034400>

| | |
|---|-------------|
| Static insulating material application in cold | -60 °C |
| Temperature index of insulation material (DIN EN 60216-1 (VDE 0304-21)) | 125 °C |
| Relative insulation material temperature index (Elec., UL 746 B) | 130 °C |
| Fire protection for rail vehicles (DIN EN 45545-2) R22 | HL 1 - HL 3 |
| Fire protection for rail vehicles (DIN EN 45545-2) R23 | HL 1 - HL 3 |
| Fire protection for rail vehicles (DIN EN 45545-2) R24 | HL 1 - HL 3 |
| Fire protection for rail vehicles (DIN EN 45545-2) R26 | HL 1 - HL 3 |
| Calorimetric heat release NFPA 130 (ASTM E 1354) | 27,5 MJ/kg |
| Surface flammability NFPA 130 (ASTM E 162) | passed |
| Specific optical density of smoke NFPA 130 (ASTM E 662) | passed |
| Smoke gas toxicity NFPA 130 (SMP 800C) | passed |

Electrical tests

Surge voltage test

| | |
|-----------------------|-------------|
| Test voltage setpoint | 7.3 kV |
| Result | Test passed |

Temperature-rise test

| | |
|--|-------------------------------------|
| Requirement temperature-rise test | Increase in temperature \leq 45 K |
| Result | Test passed |
| Short-time withstand current 4 mm ² | 0.48 kA |
| Short-time withstand current 6 mm ² | 0.72 kA |
| | 0.5 kA |
| Result | Test passed |

Power-frequency withstand voltage

| | |
|-----------------------|-------------|
| Test voltage setpoint | 1.89 kV |
| Result | Test passed |

Mechanical properties

Mechanical data

| | |
|-----------------|-----|
| Open side panel | Yes |
|-----------------|-----|

Mechanical tests

Mechanical strength

| | |
|--------|-------------|
| Result | Test passed |
|--------|-------------|

Attachment on the carrier

| | |
|-------------------------|-------------|
| DIN rail/fixing support | NS 35 |
| Test force setpoint | 5 N |
| Result | Test passed |

Test for conductor damage and slackening

| | |
|--------------------------------|------------------------------|
| Conductor cross-section/weight | 0.5 mm ² / 0.3 kg |
|--------------------------------|------------------------------|

DTME 6 - Test disconnect terminal block



3034400

<https://www.phoenixcontact.com/us/products/3034400>

| | |
|--------|----------------------------|
| | 6 mm ² / 1.4 kg |
| Result | Test passed |

Environmental and real-life conditions

Aging

| | |
|--------------------|-------------|
| Temperature cycles | 192 |
| Result | Test passed |

Needle-flame test

| | |
|------------------|-------------|
| Time of exposure | 30 s |
| Result | Test passed |

Oscillation/broadband noise

| | |
|------------------------|--|
| Specification | DIN EN 50155 (VDE 0115-200):2008-03 |
| Spectrum | Long life test category 1, class B, body mounted |
| Frequency | $f_1 = 5 \text{ Hz}$ to $f_2 = 150 \text{ Hz}$ |
| ASD level | 1.857 (m/s ²)/Hz |
| Acceleration | 0.8g |
| Test duration per axis | 5 h |
| Test directions | X-, Y- and Z-axis |
| Result | Test passed |

Shocks

| | |
|--------------------------------|-------------------------------------|
| Specification | DIN EN 50155 (VDE 0115-200):2008-03 |
| Pulse shape | Half-sine |
| Acceleration | 5g |
| Shock duration | 30 ms |
| Number of shocks per direction | 3 |
| Test directions | X-, Y- and Z-axis (pos. and neg.) |
| Result | Test passed |

Standards and regulations

| | |
|----------------------------------|---------------|
| Connection in acc. with standard | IEC 60947-7-1 |
|----------------------------------|---------------|

Mounting

| | |
|---------------|-----------|
| Mounting type | NS 35/7,5 |
| | NS 35/15 |

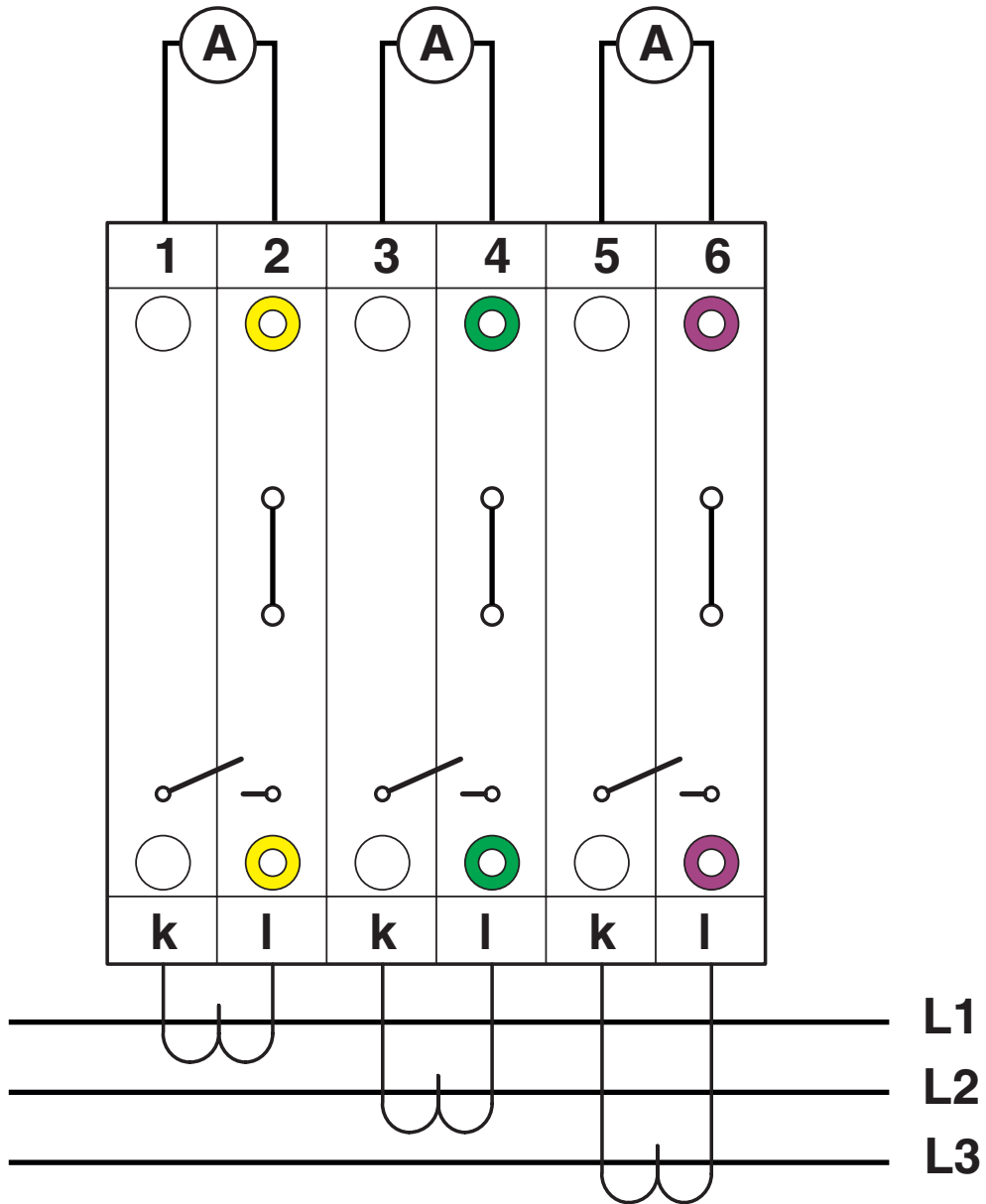
DTME 6 - Test disconnect terminal block

3034400

<https://www.phoenixcontact.com/us/products/3034400>

Drawings

Connection diagram



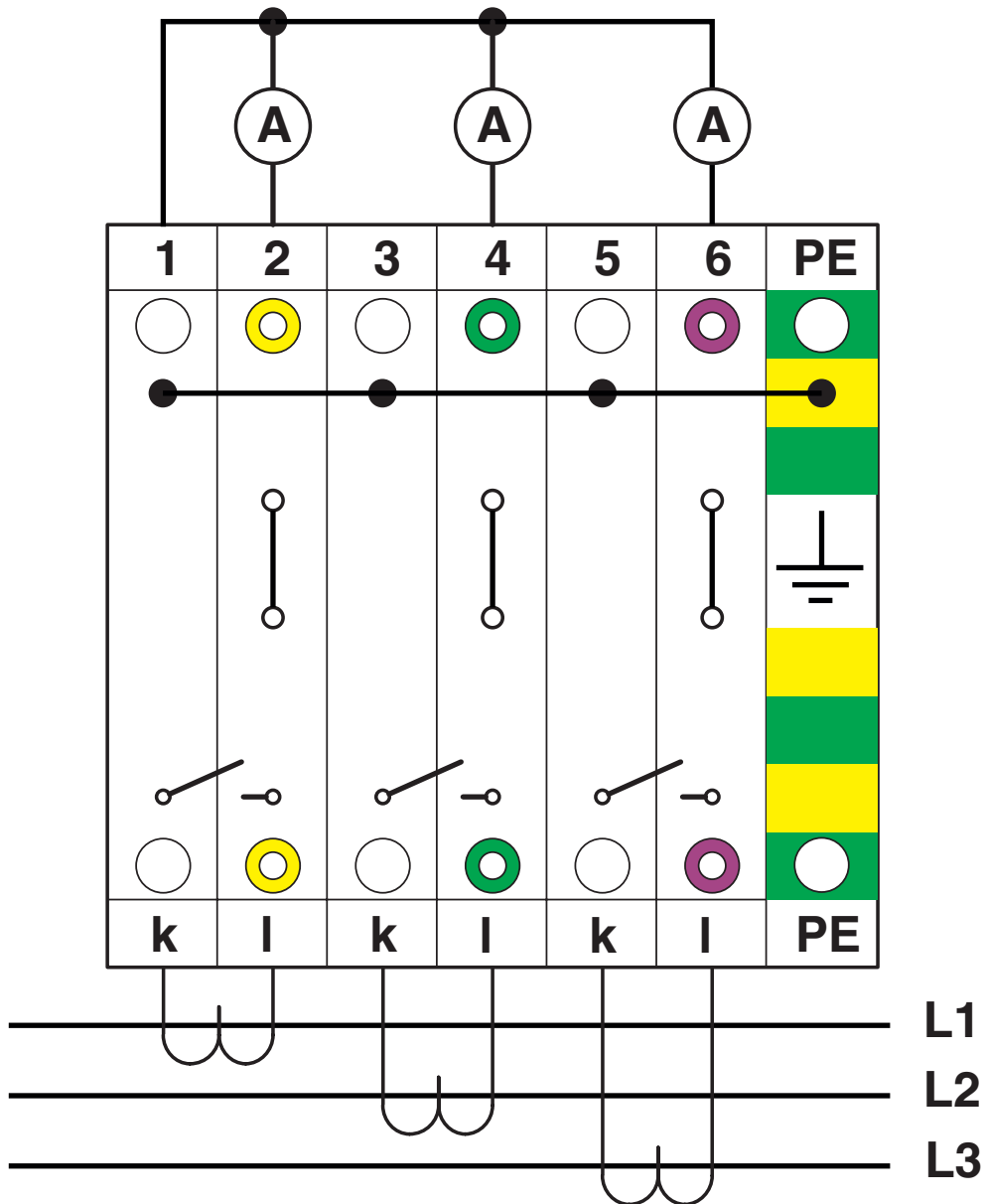
DTME 6 - Test disconnect terminal block

3034400

<https://www.phoenixcontact.com/us/products/3034400>



Connection diagram



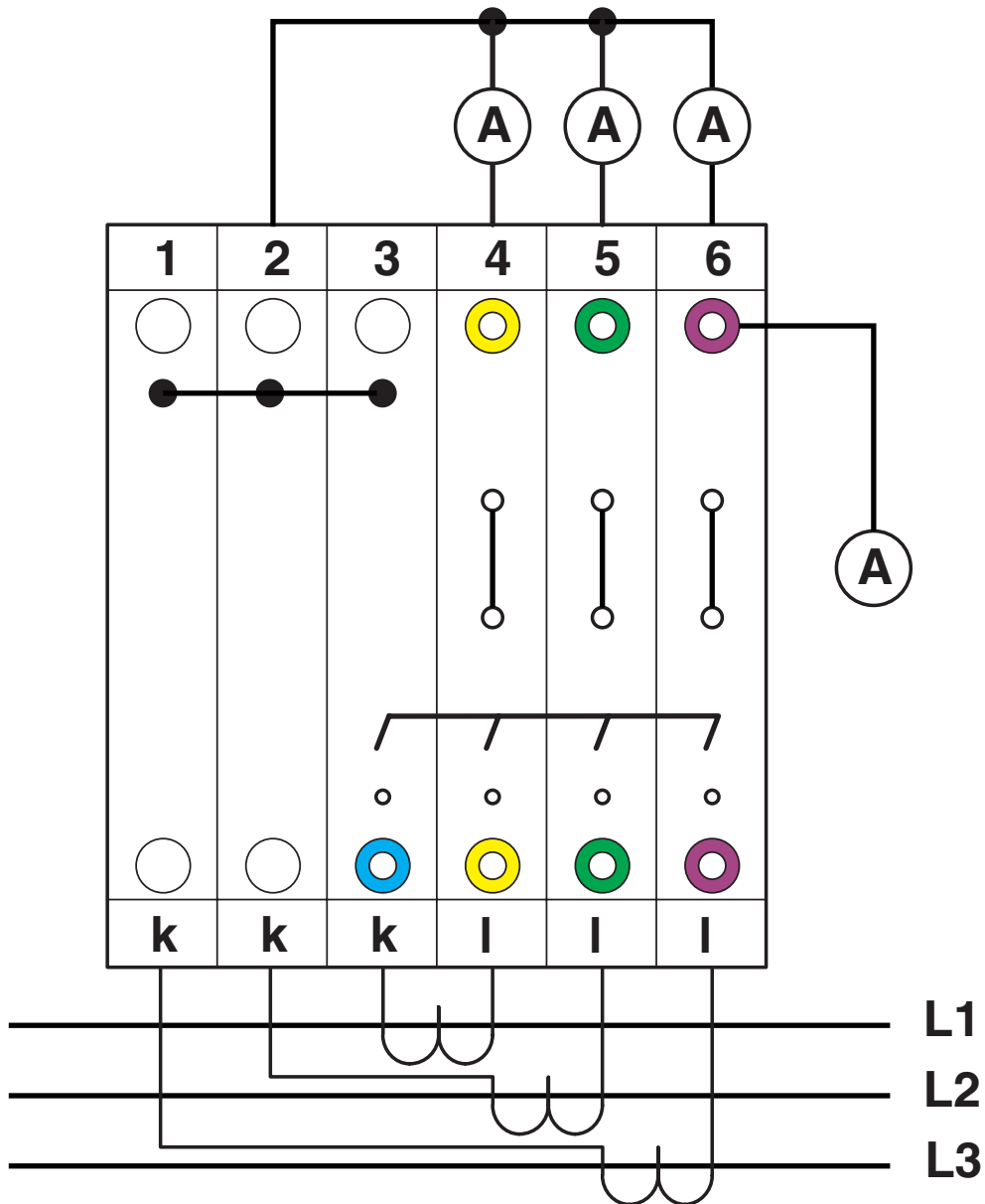
with PE terminals having the same contours

DTME 6 - Test disconnect terminal block

3034400

<https://www.phoenixcontact.com/us/products/3034400>

Connection diagram



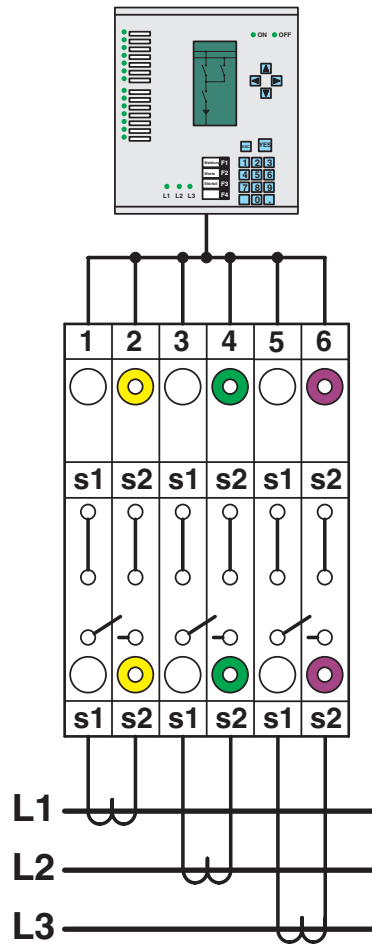
phase to phase

DTME 6 - Test disconnect terminal block

3034400

<https://www.phoenixcontact.com/us/products/3034400>

Schematic diagram



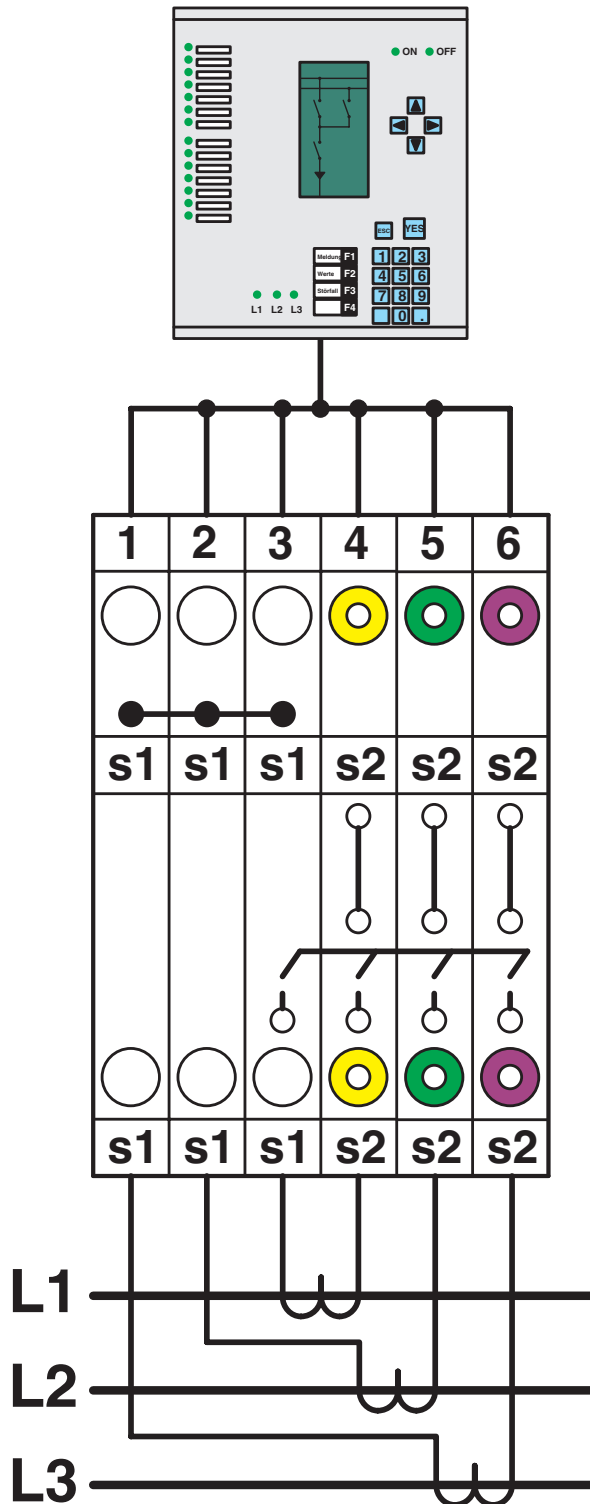
Simple three-phase current transformer set

DTME 6 - Test disconnect terminal block

3034400

<https://www.phoenixcontact.com/us/products/3034400>

Schematic diagram



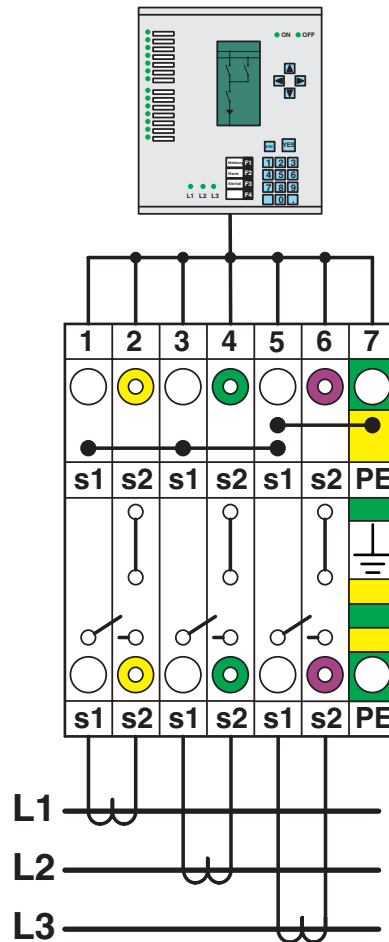
Interlinked three-phase current transformer set

DTME 6 - Test disconnect terminal block

3034400

<https://www.phoenixcontact.com/us/products/3034400>

Schematic diagram



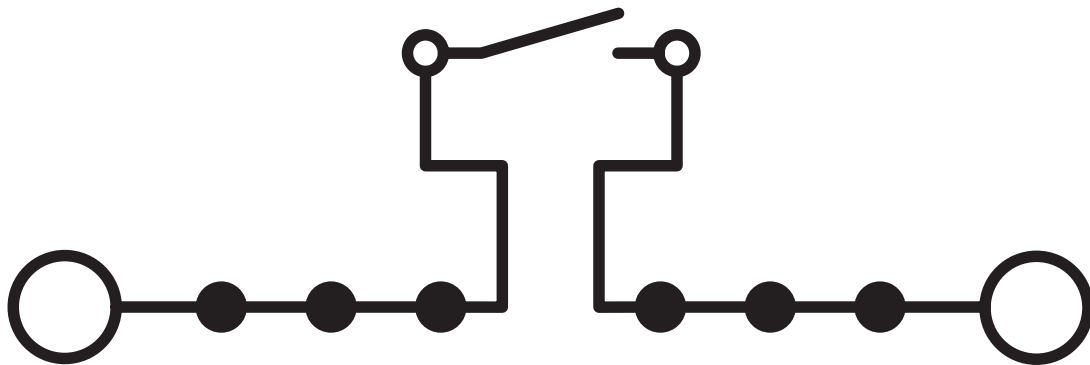
Interlinked three-phase current transformer set with grounded star point

DTME 6 - Test disconnect terminal block

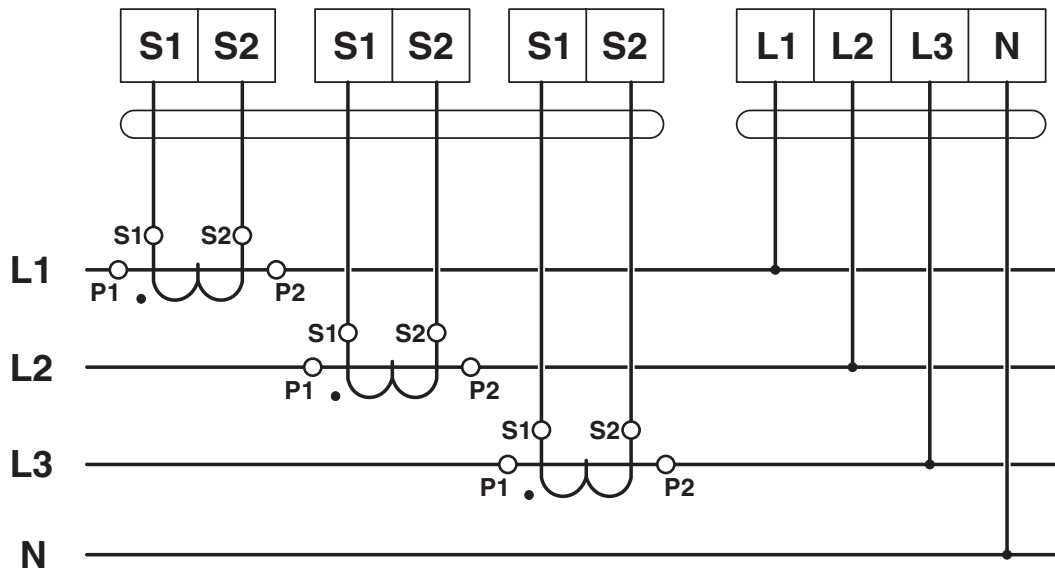
3034400

<https://www.phoenixcontact.com/us/products/3034400>

Circuit diagram



Circuit diagram



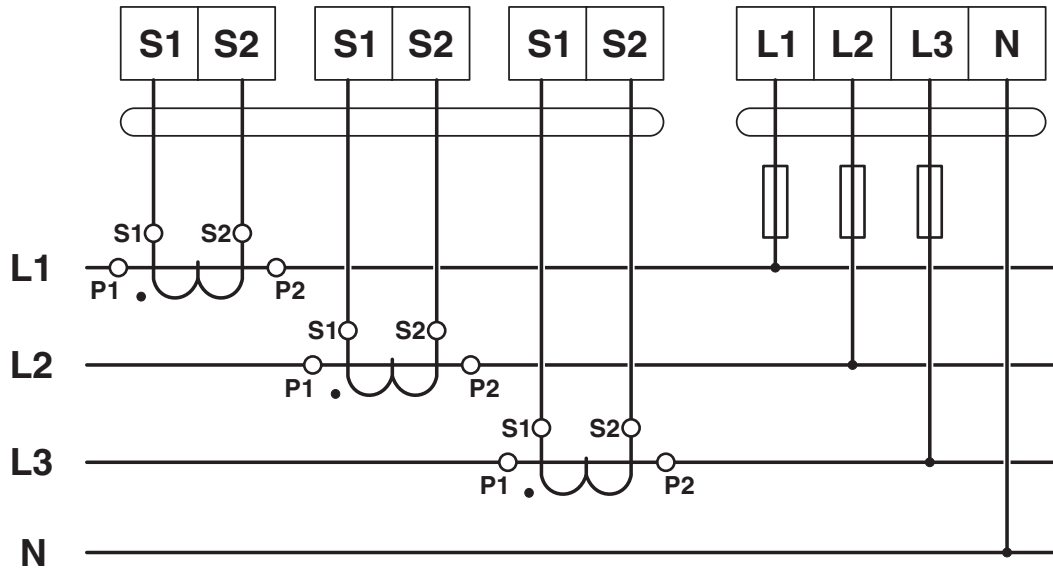
DTME 6 - Test disconnect terminal block



3034400

<https://www.phoenixcontact.com/us/products/3034400>

Circuit diagram

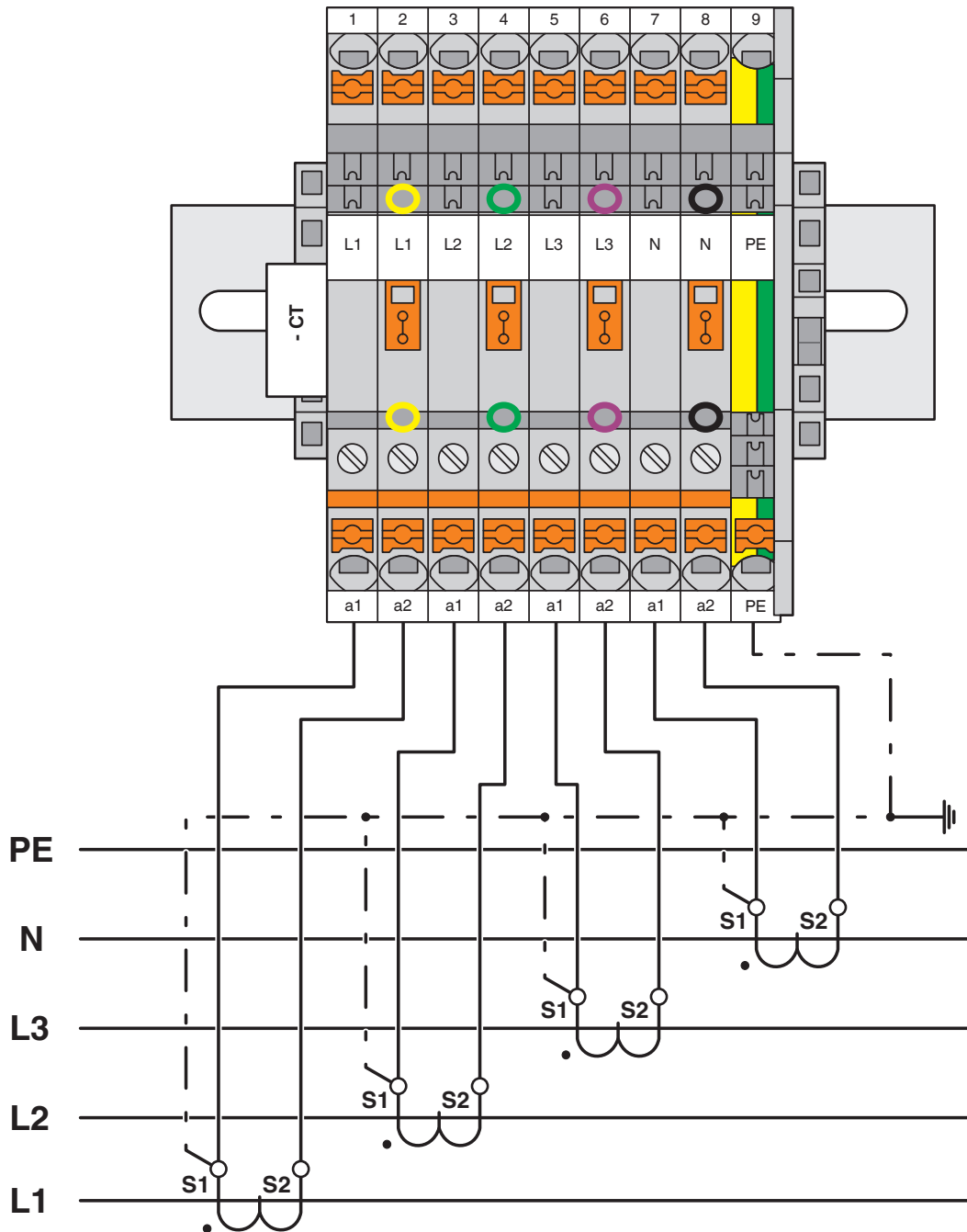


DTME 6 - Test disconnect terminal block

3034400

<https://www.phoenixcontact.com/us/products/3034400>

Circuit diagram

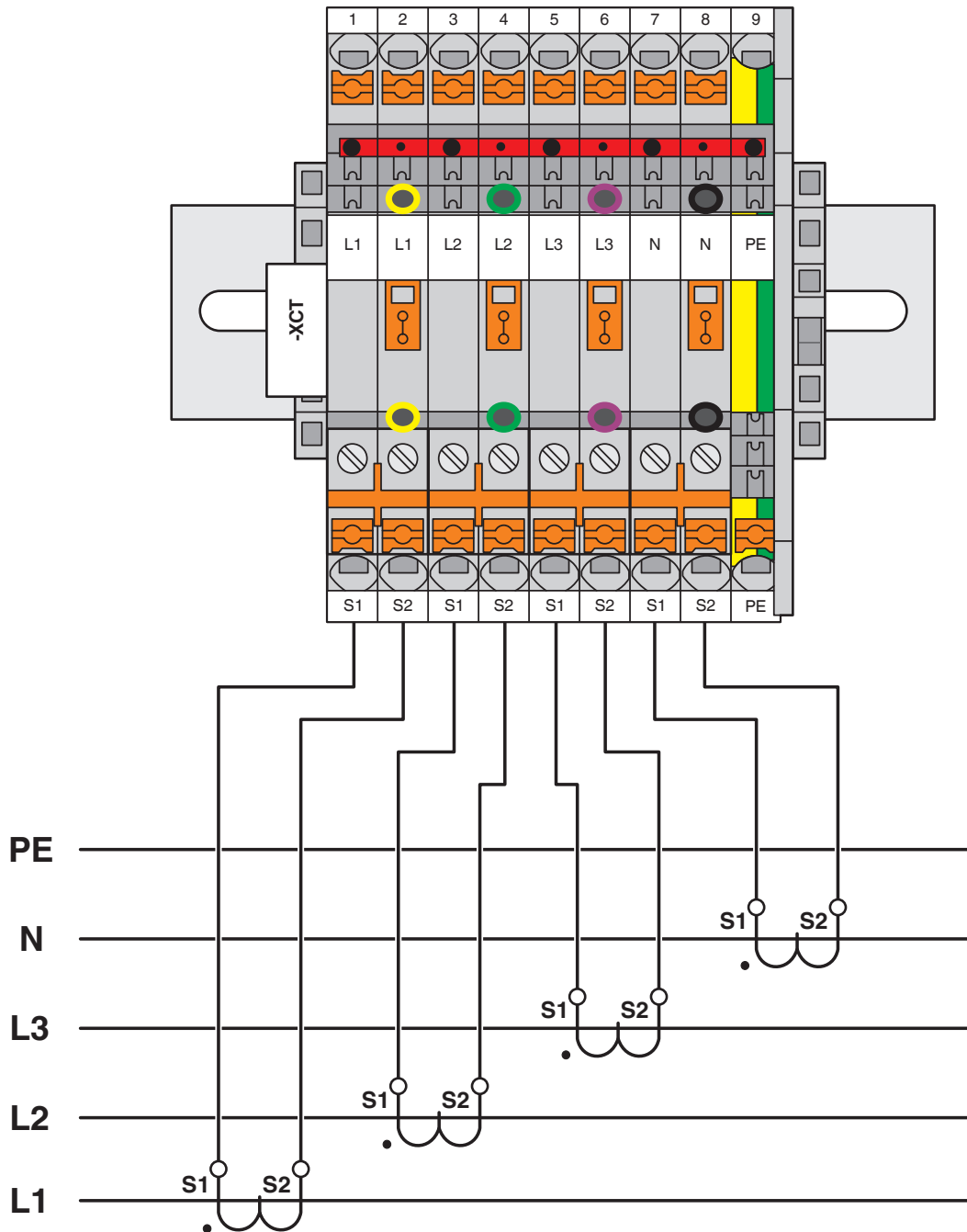


DTME 6 - Test disconnect terminal block

3034400

<https://www.phoenixcontact.com/us/products/3034400>

Circuit diagram



DTME 6 - Test disconnect terminal block



3034400

<https://www.phoenixcontact.com/us/products/3034400>

Environmental product compliance

EU RoHS

| | |
|---|--------------------|
| Fulfills EU RoHS substance requirements | Yes, No exemptions |
|---|--------------------|

China RoHS

| | |
|--|--|
| Environment friendly use period (EFUP) | EFUP-E |
| | No hazardous substances above the limits |

EU REACH SVHC

| | |
|-------------------------------------|----------------------------|
| REACH candidate substance (CAS No.) | No substance above 0.1 wt% |
|-------------------------------------|----------------------------|

Phoenix Contact 2026 © - all rights reserved

<https://www.phoenixcontact.com>

Phoenix Contact USA
586 Fulling Mill Road
Middletown, PA 17057, United States
(+717) 944-1300
info@phoenixcon.com