

P-CO 1N4007/R-L - Component connector



3032457

<https://www.phoenixcontact.com/us/products/3032457>

Please be informed that the data shown in this PDF document is generated from our online catalog. Please find the complete data in the user documentation. Our general terms of use for downloads are valid.



Component connector, with diode 1N4007, depth: 33.3 mm, width: 5.2 mm, height: 24.2 mm, number of positions: 1, color: gray, mounting type: Plug-in mounting

Your advantages

- Can be used in all disconnect terminal blocks of the range ...-TG with 5.2 mm width or wider, from the PT, ST, QTC and UT series
- For assembly, the spring-cage connections are opened or closed inside the plug with just one turn of a standard screwdriver
- The P-CO patented component plug can accommodate components quickly and reliably using spring-cage contacts
- A coding recess ensures protection against polarity reversal

Commercial data

Item number	3032457
Packing unit	10 pc
Minimum order quantity	10 pc
Sales key	BE29
Product key	BE2Z3X
GTIN	4046356172882
Weight per piece (including packing)	3.8 g
Weight per piece (excluding packing)	3.7 g
Customs tariff number	85366990
Country of origin	PL

P-CO 1N4007/R-L - Component connector



3032457

<https://www.phoenixcontact.com/us/products/3032457>

Technical data

Product properties

Product type	Component plug terminal block
Number of positions	1
Potentials	1

Connection data

Maximum load current	1 A (the maximum current is determined by the diode)
----------------------	--

Dimensions

Width	5.2 mm
Height	24.2 mm
Depth	33.3 mm

Material specifications

Color	gray (RAL 7042)
Flammability rating according to UL 94	V0
Insulating material	PA
Static insulating material application in cold	-60 °C
Relative insulation material temperature index (Elec., UL 746 B)	130 °C
Fire protection for rail vehicles (DIN EN 45545-2) R22	HL 1 - HL 3
Fire protection for rail vehicles (DIN EN 45545-2) R23	HL 1 - HL 3
Fire protection for rail vehicles (DIN EN 45545-2) R24	HL 1 - HL 3
Fire protection for rail vehicles (DIN EN 45545-2) R26	HL 1 - HL 3
Surface flammability NFPA 130 (ASTM E 162)	passed
Specific optical density of smoke NFPA 130 (ASTM E 662)	passed
Smoke gas toxicity NFPA 130 (SMP 800C)	passed

Environmental and real-life conditions

Ambient conditions

Ambient temperature (operation)	-60 °C ... 110 °C (Operating temperature range incl. self-heating; for max. short-term operating temperature, see RTI Elec.)
Ambient temperature (storage/transport)	-25 °C ... 60 °C (for a short time, not exceeding 24 h, -60 °C to +70 °C)
Ambient temperature (assembly)	-5 °C ... 70 °C
Ambient temperature (actuation)	-5 °C ... 70 °C
Permissible humidity (operation)	20 % ... 90 %
Permissible humidity (storage/transport)	30 % ... 70 %

Mounting

Mounting type	Plug-in mounting
---------------	------------------

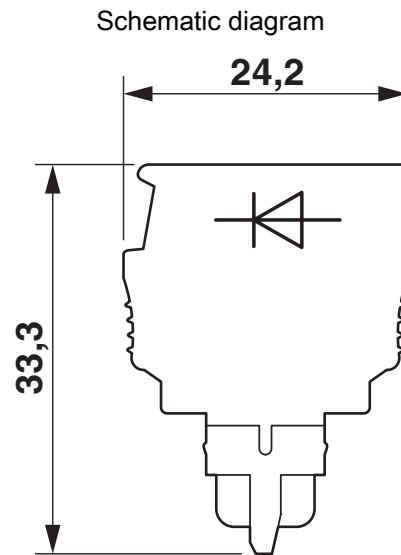
P-CO 1N4007/R-L - Component connector

3032457

<https://www.phoenixcontact.com/us/products/3032457>



Drawings



P-CO 1N4007/R-L - Component connector



3032457

<https://www.phoenixcontact.com/us/products/3032457>

Approvals

🔗 To download certificates, visit the product detail page: <https://www.phoenixcontact.com/us/products/3032457>

DNV

Approval ID: TAE000010T

P-CO 1N4007/R-L - Component connector



3032457

<https://www.phoenixcontact.com/us/products/3032457>

Classifications

ECLASS

ECLASS-13.0	27250305
ECLASS-15.0	27250305

ETIM

ETIM 10.0	EC002018
-----------	----------

UNSPSC

UNSPSC 21.0	39121600
-------------	----------

P-CO 1N4007/R-L - Component connector



3032457

<https://www.phoenixcontact.com/us/products/3032457>

Environmental product compliance

EU RoHS

Fulfills EU RoHS substance requirements	Yes
Exemption	7(a), 7(c)-I

China RoHS

Environment friendly use period (EFUP)	EFUP-50
	An article-related China RoHS declaration table can be found in the download area for the respective article under "Manufacturer declaration". For all articles with EFUP-E, no China RoHS declaration table issued and required.

EU REACH SVHC

REACH candidate substance (CAS No.)	Lead(CAS: 7439-92-1)
SCIP	e5106cba-4fac-4aad-8fcc-90b9ade0c625

EF3.1 Climate Change

CO2e kg	0.028 kg CO2e
---------	---------------

Phoenix Contact 2026 © - all rights reserved
<https://www.phoenixcontact.com>

Phoenix Contact USA
586 Fulling Mill Road
Middletown, PA 17057, United States
(+717) 944-1300
info@phoenixcon.com