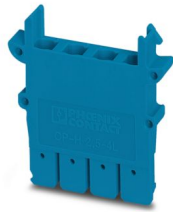


CP-H 2,5-4L BU - Connector housing

3012322

<https://www.phoenixcontact.com/us/products/3012322>

Please be informed that the data shown in this PDF document is generated from our online catalog. Please find the complete data in the user documentation. Our general terms of use for downloads are valid.



Connector housing, connection method: Crimp connection, depth: 31.7 mm, width: 5.2 mm, height: 31.6 mm, number of positions: 4, color: blue

Your advantages

- Can be labeled at each terminal point
- Four feed-through levels
- Design width of just 5.2 mm

Commercial data

Item number	3012322
Packing unit	50 pc
Minimum order quantity	50 pc
Product key	BE2144
GTIN	4046356740500
Weight per piece (including packing)	1.997 g
Weight per piece (excluding packing)	1.886 g
Country of origin	PL

CP-H 2,5-4L BU - Connector housing



3012322

<https://www.phoenixcontact.com/us/products/3012322>

Technical data

Product properties

Product type	Plug
Number of positions	4

Connection data

Connection method	Crimp connection
-------------------	------------------

Dimensions

Width	5.2 mm
Height	31.6 mm
Depth	31.7 mm

Material specifications

Color	blue (RAL 5015)
Flammability rating according to UL 94	V0
Insulating material	PA
Static insulating material application in cold	-60 °C
Temperature index of insulation material (DIN EN 60216-1 (VDE 0304-21))	130 °C
Relative insulation material temperature index (Elec., UL 746 B)	130 °C
Fire protection for rail vehicles (DIN EN 45545-2) R22	HL 1 - HL 3
Fire protection for rail vehicles (DIN EN 45545-2) R23	HL 1 - HL 3
Fire protection for rail vehicles (DIN EN 45545-2) R24	HL 1 - HL 3
Fire protection for rail vehicles (DIN EN 45545-2) R26	HL 1 - HL 3
Calorimetric heat release NFPA 130 (ASTM E 1354)	28 MJ/kg
Surface flammability NFPA 130 (ASTM E 162)	passed
Specific optical density of smoke NFPA 130 (ASTM E 662)	passed
Smoke gas toxicity NFPA 130 (SMP 800C)	passed

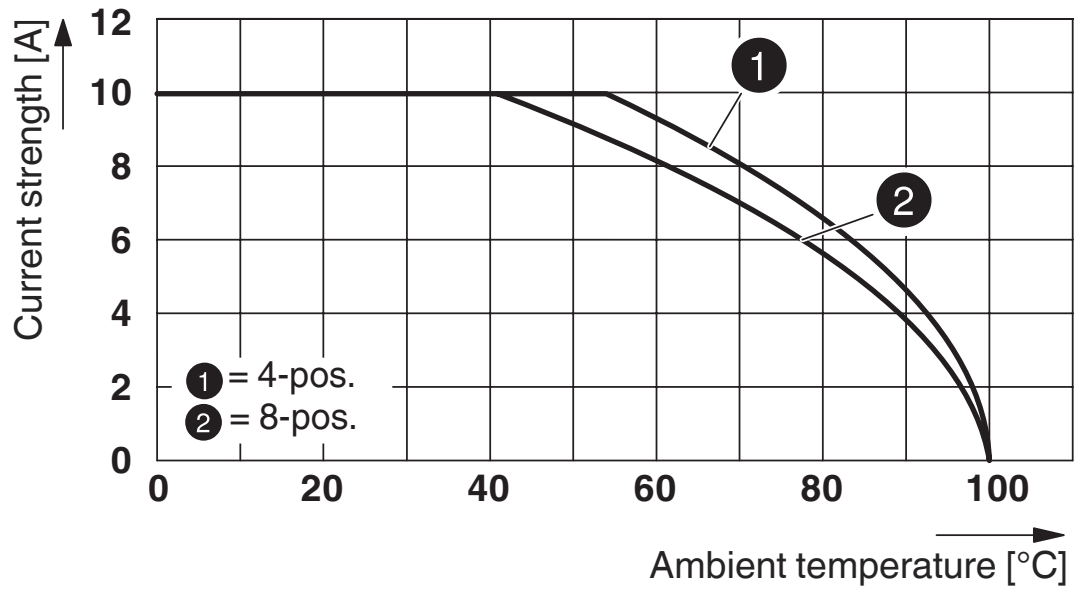
Environmental and real-life conditions

Ambient conditions

Ambient temperature (operation)	-60 °C (max. operating temperature see derating curve)
Ambient temperature (storage/transport)	-25 °C ... 60 °C (for a short time, not exceeding 24 h, -60 °C to +70 °C)
Ambient temperature (assembly)	-5 °C ... 70 °C
Ambient temperature (actuation)	-5 °C ... 70 °C
Permissible humidity (storage/transport)	30 % ... 70 %

Drawings

Diagram



CP-H 2,5-4L BU - Connector housing



3012322

<https://www.phoenixcontact.com/us/products/3012322>

Classifications

ECLASS

ECLASS-13.0

27440202

ETIM

ETIM 9.0

EC000437

UNSPSC

UNSPSC 21.0

31261500

CP-H 2,5-4L BU - Connector housing



3012322

<https://www.phoenixcontact.com/us/products/3012322>

Environmental product compliance

China RoHS

Environment friendly use period (EFUP)	EFUP-E
	No hazardous substances above the limits

EU REACH SVHC

REACH candidate substance (CAS No.)	No substance above 0.1 wt%
-------------------------------------	----------------------------

Phoenix Contact 2026 © - all rights reserved
<https://www.phoenixcontact.com>

Phoenix Contact USA
586 Fulling Mill Road
Middletown, PA 17057, United States
(+717) 944-1300
info@phoenixcon.com