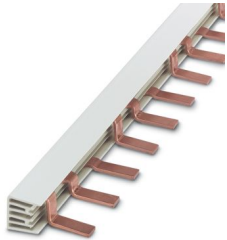


EB 56-18/L1-L2-L3 - Insertion bridge

3009367

<https://www.phoenixcontact.com/us/products/3009367>

Please be informed that the data shown in this PDF document is generated from our online catalog. Please find the complete data in the user documentation. Our general terms of use for downloads are valid.



Insertion bridge, pitch: 18 mm, number of positions: 56, color: gray

Commercial data

Item number	3009367
Packing unit	1 pc
Minimum order quantity	1 pc
Sales key	BE19
Product key	BE1Z2X
GTIN	4017918091811
Weight per piece (including packing)	630 g
Weight per piece (excluding packing)	630 g
Customs tariff number	85366990
Country of origin	DE

EB 56-18/L1-L2-L3 - Insertion bridge



3009367

<https://www.phoenixcontact.com/us/products/3009367>

Technical data

Product properties

Product type	Insertion bridge
Number of positions	56
Pitch	18 mm

Dimensions

Pitch	18 mm
-------	-------

Material specifications

Color	gray (RAL 7042)
Material	Copper
Insulating material	PA

Mounting

Mounting type	Screw mounting
---------------	----------------

EB 56-18/L1-L2-L3 - Insertion bridge



3009367

<https://www.phoenixcontact.com/us/products/3009367>

Classifications

ECLASS

ECLASS-13.0	27250303
ECLASS-15.0	27250303

ETIM

ETIM 10.0	EC000489
-----------	----------

UNSPSC

UNSPSC 21.0	39121400
-------------	----------

EB 56-18/L1-L2-L3 - Insertion bridge



3009367

<https://www.phoenixcontact.com/us/products/3009367>

Environmental product compliance

EU RoHS

Fulfills EU RoHS substance requirements	Yes, No exemptions
---	--------------------

China RoHS

Environment friendly use period (EFUP)	EFUP-E
	No hazardous substances above the limits

EU REACH SVHC

REACH candidate substance (CAS No.)	No substance above 0.1 wt%
-------------------------------------	----------------------------

Phoenix Contact 2026 © - all rights reserved
<https://www.phoenixcontact.com>

Phoenix Contact USA
586 Fulling Mill Road
Middletown, PA 17057, United States
(+717) 944-1300
info@phoenixcon.com