

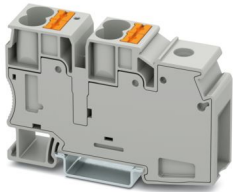
PTU 35/4X10 - Potential collective terminal



3002371

<https://www.phoenixcontact.com/us/products/3002371>

Please be informed that the data shown in this PDF document is generated from our online catalog. Please find the complete data in the user documentation. Our general terms of use for downloads are valid.



Potential collective terminal, In the end application, the applicable safety regulations for overload and short-circuit protection on the connected conductors must be considered., nom. voltage: 1000 V, nominal current: 57 A, Load contact, connection method: Push-in connection, Rated cross section: 10 mm², cross section: 0.5 mm² - 16 mm², Line contact, connection method: Screw connection, Rated cross section: 35 mm², cross section: 1.5 mm² - 50 mm², mounting: NS 35/7,5, NS 35/15, color: gray

Your advantages

- The terminal block base is ideal for use in building installation and machine building applications
- The compact design and front connection enable wiring in a confined space
- The Push-in connection terminal blocks are characterized by the system features of the CLIPLINE complete system and by easy and tool-free wiring of conductors with ferrules or solid conductors
- In addition to the testing option in the double function shaft, all terminal blocks provide an additional test pick-off

Commercial data

| | |
|--------------------------------------|---------------|
| Item number | 3002371 |
| Packing unit | 25 pc |
| Minimum order quantity | 25 pc |
| Sales key | BE22 |
| Product key | BE2219 |
| GTIN | 4055626430881 |
| Weight per piece (including packing) | 72.88 g |
| Weight per piece (excluding packing) | 71.33 g |
| Customs tariff number | 85369010 |
| Country of origin | IN |

PTU 35/4X10 - Potential collective terminal



3002371

<https://www.phoenixcontact.com/us/products/3002371>

Technical data

Notes

| | |
|--------------------|---|
| Notes on operation | In the end application, the applicable safety regulations for overload and short-circuit protection on the connected conductors must be considered. |
|--------------------|---|

General

| | |
|------|--|
| Note | The max. load current must not be exceeded by the total current of all connected conductors. |
|------|--|

Product properties

| | |
|-----------------------|-----------------------|
| Product type | Potential distributor |
| Product family | PTU |
| Number of connections | 5 |
| Number of rows | 1 |
| Potentials | 1 |

Insulation characteristics

| | |
|----------------------|-----|
| Overvoltage category | III |
| Degree of pollution | 2 |

Electrical properties

| | |
|---|--------|
| Rated surge voltage | 8 kV |
| Maximum power dissipation for nominal condition | 2.43 W |

Connection data

| | |
|---------------------------------|---|
| Number of connections per level | 5 |
|---------------------------------|---|

Load contact

| | |
|---|--|
| Connection method | Push-in connection |
| Stripping length | 18 mm ... 20 mm |
| Connection in acc. with standard | IEC 60947-7-1 |
| Conductor cross-section rigid | 0.5 mm ² ... 16 mm ² |
| Cross section AWG | 20 ... 6 (converted acc. to IEC) |
| Conductor cross-section flexible | 0.5 mm ² ... 10 mm ² |
| Conductor cross-section, flexible [AWG] | 20 ... 8 (converted acc. to IEC) |
| Conductor cross-section flexible (ferrule without plastic sleeve) | 0.5 mm ² ... 10 mm ² |
| Flexible conductor cross-section (ferrule with plastic sleeve) | 0.5 mm ² ... 10 mm ² |
| 2 conductors with the same cross section, flexible, with TWIN ferrule with plastic sleeve | 1.5 mm ² ... 4 mm ² |
| Nominal cross section | 10 mm ² |
| Nominal current | 57 A |
| Maximum load current | 57 A |
| Nominal voltage | 1000 V |

Line contact

PTU 35/4X10 - Potential collective terminal



3002371

<https://www.phoenixcontact.com/us/products/3002371>

| | |
|---|---|
| Connection method | Screw connection |
| Screw thread | M6 |
| Tightening torque | 3.2 ... 3.7 Nm |
| Stripping length | 18 mm ... 20 mm |
| Internal cylindrical gage | B9 |
| Connection in acc. with standard | IEC 60947-7-1 |
| Conductor cross-section rigid | 1.5 mm ² ... 50 mm ² |
| Cross section AWG | 14 ... 2 (converted acc. to IEC) |
| Conductor cross-section flexible | 1.5 mm ² ... 35 mm ² |
| Conductor cross-section, flexible [AWG] | 14 ... 2 (converted acc. to IEC) |
| Conductor cross-section flexible (ferrule without plastic sleeve) | 1.5 mm ² ... 35 mm ² |
| Flexible conductor cross-section (ferrule with plastic sleeve) | 1.5 mm ² ... 35 mm ² |
| 2 conductors with same cross section, rigid | 1.5 mm ² ... 16 mm ² |
| 2 conductors with the same cross-section AWG rigid | 16 ... 6 (converted acc. to IEC) |
| 2 conductors with same cross section, flexible | 1.5 mm ² ... 10 mm ² |
| 2 conductors with the same cross-section AWG flexible | 16 ... 8 (converted acc. to IEC) |
| 2 conductors with the same cross section, flexible, with TWIN ferrule with plastic sleeve | 1.5 mm ² ... 10 mm ² |
| Nominal cross section | 35 mm ² |
| Nominal current | 101 A |
| Maximum load current | 101 A (The maximum load current must not be exceeded by the total current of all connected conductors.) |
| Nominal voltage | 1000 V |

Load contact Connection cross sections directly pluggable

| | |
|---|--|
| Conductor cross-section rigid | 1 mm ² ... 16 mm ² |
| Conductor cross-section flexible (ferrule without plastic sleeve) | 4 mm ² ... 10 mm ² |
| Flexible conductor cross-section (ferrule with plastic sleeve) | 2.5 mm ² ... 10 mm ² |

Dimensions

| | |
|--------------------|---------|
| Width | 19.4 mm |
| Height | 79.9 mm |
| Depth on NS 35/7,5 | 50.3 mm |
| Depth on NS 35/15 | 57.8 mm |

Material specifications

| | |
|--|-----------------|
| Color | gray (RAL 7042) |
| Flammability rating according to UL 94 | V0 |
| Insulating material group | I |
| Insulating material | PA |
| Static insulating material application in cold | -60 °C |
| Relative insulation material temperature index (Elec., UL 746 B) | 130 °C |
| Fire protection for rail vehicles (DIN EN 45545-2) R22 | HL 1 - HL 3 |
| Fire protection for rail vehicles (DIN EN 45545-2) R23 | HL 1 - HL 3 |
| Fire protection for rail vehicles (DIN EN 45545-2) R24 | HL 1 - HL 3 |

PTU 35/4X10 - Potential collective terminal



3002371

<https://www.phoenixcontact.com/us/products/3002371>

| | |
|---|-------------|
| Fire protection for rail vehicles (DIN EN 45545-2) R26 | HL 1 - HL 3 |
| Surface flammability NFPA 130 (ASTM E 162) | passed |
| Specific optical density of smoke NFPA 130 (ASTM E 662) | passed |
| Smoke gas toxicity NFPA 130 (SMP 800C) | passed |

Electrical tests

Surge voltage test

| | |
|---|-------------|
| Test voltage setpoint | 9.8 kV |
| Result | Test passed |
| Short-time withstand current 10 mm ² | 1.2 kA |
| Result | Test passed |

Power-frequency withstand voltage

| | |
|-----------------------|-------------|
| Test voltage setpoint | 2.2 kV |
| Result | Test passed |

Mechanical properties

Mechanical data

| | |
|-----------------|----|
| Open side panel | No |
|-----------------|----|

Mechanical tests

Mechanical strength

| | |
|--------|-------------|
| Result | Test passed |
|--------|-------------|

Attachment on the carrier

| | |
|-------------------------|-------------|
| DIN rail/fixing support | NS 32/NS 35 |
| Test force setpoint | 5 N |
| Result | Test passed |

Test for conductor damage and slackening

| | |
|--------------------------------|------------------------------|
| Rotation speed | 10 (+/- 2) rpm |
| Revolutions | 135 |
| Conductor cross-section/weight | 2.5 mm ² / 0.7 kg |
| | 10 mm ² / 2 kg |
| | 35 mm ² / 6.8 kg |
| Result | Test passed |

Environmental and real-life conditions

Aging

| | |
|--------------------|-------------|
| Temperature cycles | 192 |
| Result | Test passed |

Needle-flame test

| | |
|------------------|------|
| Time of exposure | 30 s |
|------------------|------|

PTU 35/4X10 - Potential collective terminal



3002371

<https://www.phoenixcontact.com/us/products/3002371>

| | |
|--------|-------------|
| Result | Test passed |
|--------|-------------|

Oscillation/broadband noise

| | |
|------------------------|--|
| Specification | DIN EN 50155 (VDE 0115-200):2022-06 |
| Spectrum | Long life test category 2, bogie-mounted |
| Frequency | $f_1 = 5 \text{ Hz}$ to $f_2 = 250 \text{ Hz}$ |
| ASD level | 6.12 (m/s ²)/Hz |
| Acceleration | 3.12g |
| Test duration per axis | 5 h |
| Test directions | X-, Y- and Z-axis |
| Result | Test passed |

Shocks

| | |
|--------------------------------|-------------------------------------|
| Specification | DIN EN 50155 (VDE 0115-200):2008-03 |
| Pulse shape | Half-sine |
| Acceleration | 5g |
| Shock duration | 30 ms |
| Number of shocks per direction | 3 |
| Test directions | X-, Y- and Z-axis (pos. and neg.) |
| Result | Test passed |

Ambient conditions

| | |
|--|--|
| Ambient temperature (operation) | -60 °C ... 110 °C (Operating temperature range incl. self-heating; for max. short-term operating temperature, see RTI Elec.) |
| Ambient temperature (storage/transport) | -25 °C ... 60 °C (for a short time, not exceeding 24 h, -60 °C to +70 °C) |
| Ambient temperature (assembly) | -5 °C ... 70 °C |
| Ambient temperature (actuation) | -5 °C ... 70 °C |
| Permissible humidity (operation) | 20 % ... 90 % |
| Permissible humidity (storage/transport) | 30 % ... 70 % |

Standards and regulations

| | |
|----------------------------------|---------------|
| Connection in acc. with standard | IEC 60947-7-1 |
| | IEC 60947-7-1 |

Mounting

| | |
|---------------|-----------|
| Mounting type | NS 35/7,5 |
| | NS 35/15 |

PTU 35/4X10 - Potential collective terminal



3002371

<https://www.phoenixcontact.com/us/products/3002371>

Drawings

Circuit diagram



PTU 35/4X10 - Potential collective terminal



3002371

<https://www.phoenixcontact.com/us/products/3002371>

Approvals

To download certificates, visit the product detail page: <https://www.phoenixcontact.com/us/products/3002371>



EAC

Approval ID: RU C-DE.BL08.B.00644



cULus Recognized

Approval ID: E60425

| | Nominal voltage U_N | Nominal current I_N | Cross section AWG | Cross section mm^2 |
|------------------------|-----------------------|-----------------------|-------------------|-----------------------------|
| B | | | | |
| Spring-cage connection | 600 V | 36 A | 20 - 8 | - |
| Screw connection | 600 V | 86 A | 14 - 3 | - |
| C | | | | |
| Spring-cage connection | 600 V | 36 A | 20 - 8 | - |
| Screw connection | 600 V | 86 A | 14 - 3 | - |



EAC

Approval ID: KZ7500651131219505

PTU 35/4X10 - Potential collective terminal



3002371

<https://www.phoenixcontact.com/us/products/3002371>

Classifications

ECLASS

| | |
|-------------|----------|
| ECLASS-13.0 | 27250119 |
| ECLASS-15.0 | 27250119 |

ETIM

| | |
|-----------|----------|
| ETIM 10.0 | EC000897 |
|-----------|----------|

UNSPSC

| | |
|-------------|----------|
| UNSPSC 21.0 | 39121400 |
|-------------|----------|

PTU 35/4X10 - Potential collective terminal



3002371

<https://www.phoenixcontact.com/us/products/3002371>

Environmental product compliance

EU RoHS

| | |
|---|--------------------|
| Fulfills EU RoHS substance requirements | Yes, No exemptions |
|---|--------------------|

China RoHS

| | |
|--|--|
| Environment friendly use period (EFUP) | EFUP-E |
| | No hazardous substances above the limits |

EU REACH SVHC

| | |
|-------------------------------------|----------------------------|
| REACH candidate substance (CAS No.) | No substance above 0.1 wt% |
|-------------------------------------|----------------------------|

EF3.1 Climate Change

| | |
|---------|---------------|
| CO2e kg | 0.303 kg CO2e |
|---------|---------------|

Phoenix Contact 2026 © - all rights reserved
<https://www.phoenixcontact.com>

Phoenix Contact USA
586 Fulling Mill Road
Middletown, PA 17057, United States
(+717) 944-1300
info@phoenixcon.com