

# EMG 17-OV-220DC/ 60DC/3 - Solid-state relay module



2954183

<https://www.phoenixcontact.com/us/products/2954183>

Please be informed that the data shown in this PDF document is generated from our online catalog. Please find the complete data in the user documentation. Our general terms of use for downloads are valid.



Power solid-state relay, with LED and protective circuit in input and output circuits, input: 220 V DC, output: 12 - 60 V DC/max. 3 A

The figure shows version EMG 17-OV, with DC voltage output, max. 3 A

## Commercial data

|                                      |                                |
|--------------------------------------|--------------------------------|
| Item number                          | 2954183                        |
| Packing unit                         | 1 pc                           |
| Note                                 | Made to order (non-returnable) |
| Sales key                            | NULL                           |
| Product key                          | DK61C2                         |
| GTIN                                 | 4017918084844                  |
| Weight per piece (including packing) | 85.08 g                        |
| Weight per piece (excluding packing) | 85.08 g                        |
| Customs tariff number                | 85364900                       |
| Country of origin                    | DE                             |

## Technical data

### Product properties

|                |                          |
|----------------|--------------------------|
| Product type   | Solid-state relay module |
| Application    | Output function          |
| Operating mode | 100% operating factor    |

### Insulation characteristics

|            |                  |
|------------|------------------|
| Insulation | Basic insulation |
|------------|------------------|

### Data management status

|                              |            |
|------------------------------|------------|
| Date of last data management | 15.09.2025 |
|------------------------------|------------|

### Electrical properties

|                             |                          |
|-----------------------------|--------------------------|
| Test voltage (Input/output) | 3.5 kV AC (Input/output) |
|-----------------------------|--------------------------|

### Input data

|  |  |
|--|--|
| Nominal input voltage $U_N$                          | 220 V DC   |
| Input voltage range in reference to $U_N$            | 0.8 ... 1.2  |
| Input voltage range                                  | 176 V DC ... 264 V DC  |
| Switching threshold "0" signal in reference to $U_N$ | $\leq 0.4$   |
| Switching threshold "1" signal in reference to $U_N$ | $\geq 0.8$   |
| Typical input current at $U_N$                       | 4.5 mA   |
| Typical response time                                | 20 $\mu$ s   |
| Typical turn-off time                                | 200 $\mu$ s  |
| Status display                                       | LED (yellow)   |
| Protective circuit                                   | Reverse polarity protection; Polarity protection diode<br>Surge protection |
| Transmission frequency                               | 300 Hz   |

### Output data

|  |  |
|--|--|
| Design of digital output                         | electronic   |
| Output nominal voltage                           | 60 V DC  |
| Output voltage range                             | 12 V DC ... 60 V DC  |
| Limiting continuous current                      | 3 A (see derating curve)   |
| Peak offstate voltage                            | 60 V DC  |
| Voltage drop at max. limiting continuous current | 1.2 V  |
| Output circuit                                   | 2-conductor, floating  |
| Protective circuit                               | Reverse polarity protection; Polarity protection diode<br>Surge protection |

### Connection data

#### Input side

|                   |                  |
|-------------------|------------------|
| Connection method | Screw connection |
|-------------------|------------------|

# EMG 17-OV-220DC/ 60DC/3 - Solid-state relay module



2954183

<https://www.phoenixcontact.com/us/products/2954183>

|                                  |   |
|----------------------------------|---|
| Stripping length                 | 8 mm  |
| Screw thread                     | M3  |
| Conductor cross-section rigid    | 0.2 mm <sup>2</sup> ... 4 mm <sup>2</sup>   |
| Conductor cross-section flexible | 0.2 mm <sup>2</sup> ... 2.5 mm <sup>2</sup> |
| Conductor cross-section AWG      | 24 ... 12                                   |

## Output side

|                                  |   |
|----------------------------------|---|
| Connection method                | Screw connection                            |
| Stripping length                 | 8 mm  |
| Screw thread                     | M3  |
| Conductor cross-section rigid    | 0.2 mm <sup>2</sup> ... 4 mm <sup>2</sup>   |
| Conductor cross-section flexible | 0.2 mm <sup>2</sup> ... 2.5 mm <sup>2</sup> |
| Conductor cross-section AWG      | 24 ... 12                                   |

## Dimensions

|        |         |
|--------|---------|
| Width  | 17.5 mm |
| Height | 75 mm   |
| Depth  | 102 mm  |

## Material specifications

|  |                  |
|--|------------------|
| Color                                  | green (RAL 6021) |
| Flammability rating according to UL 94 | V0               |

## Environmental and real-life conditions

### Ambient conditions

|   |                  |
|---|------------------|
| Degree of protection                    | IP20             |
| Ambient temperature (operation)         | -20 °C ... 60 °C |
| Ambient temperature (storage/transport) | -20 °C ... 70 °C |

## Standards and regulations

|                       |           |
|-----------------------|-----------|
| Standards/regulations | IEC 60664 |
|                       | EN 50178  |

## Mounting

|                   |                           |
|-------------------|---------------------------|
| Assembly note     | in rows with zero spacing |
| Mounting position | any                       |

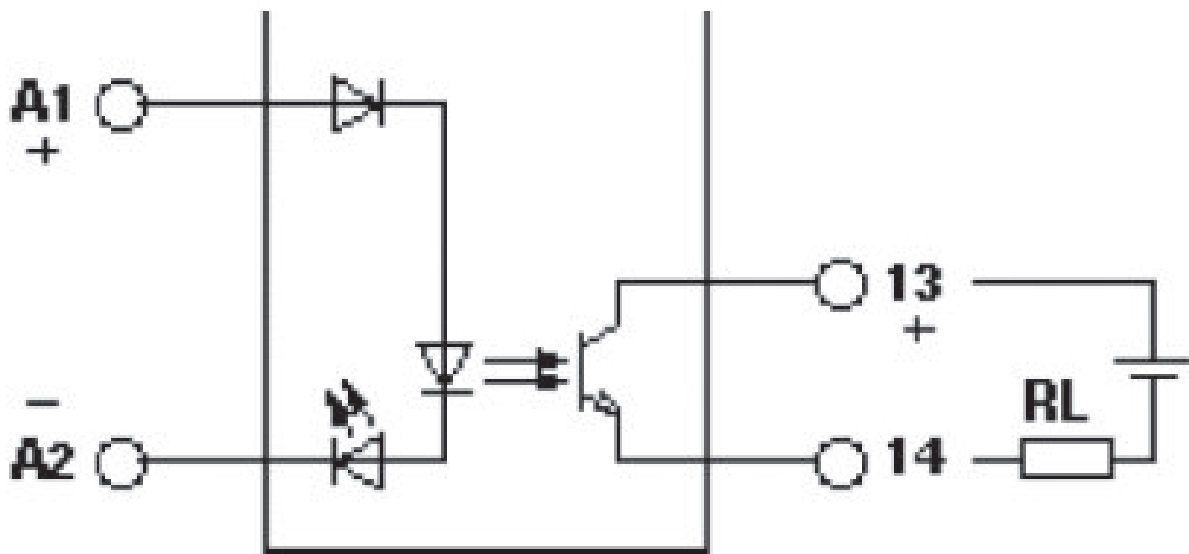
## Drawings

Diagram



- ① In rows with zero spacing
- ② stand-alone device

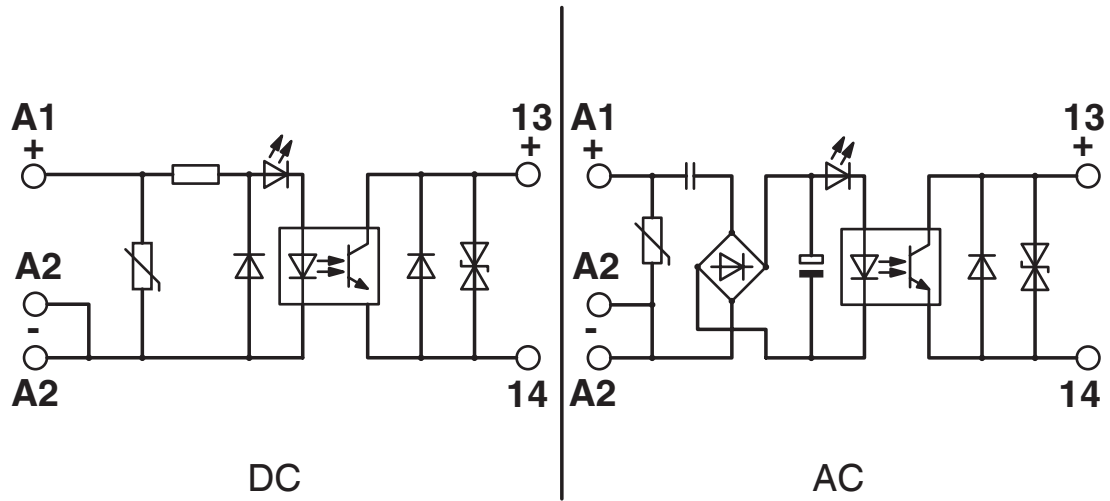
Circuit diagram



2954183

<https://www.phoenixcontact.com/us/products/2954183>

Circuit diagram



2954183

<https://www.phoenixcontact.com/us/products/2954183>

## Environmental product compliance

### China RoHS

|  |   |
|--|---|
| Environment friendly use period (EFUP) | EFUP-50   |
|  | An article-related China RoHS declaration table can be found in the download area for the respective article under "Manufacturer declaration". For all articles with EFUP-E, no China RoHS declaration table issued and required. |

### EU REACH SVHC

|                                     |                            |
|-------------------------------------|----------------------------|
| REACH candidate substance (CAS No.) | No substance above 0.1 wt% |
|-------------------------------------|----------------------------|

Phoenix Contact 2026 © - all rights reserved  
<https://www.phoenixcontact.com>

Phoenix Contact USA  
586 Fulling Mill Road  
Middletown, PA 17057, United States  
(+717) 944-1300  
[info@phoenixcon.com](mailto:info@phoenixcon.com)