

EMG 45-ELR3/1,5 - Load relay



2942739

<https://www.phoenixcontact.com/us/products/2942739>

Please be informed that the data shown in this PDF document is generated from our online catalog. Please find the complete data in the user documentation. Our general terms of use for downloads are valid.



Electronic load relay, for direct driving of equipment in the 3-phase network, with light indicator and protection circuit, output: 320 V AC 440 V AC/3x 1.5 A

Your advantages

- Wear-free
- High switching frequency
- Protective circuit in input and output

Commercial data

Item number	2942739
Packing unit	1 pc
Minimum order quantity	1 pc
Note	Made to order (non-returnable)
Sales key	C472
Product key	DK7211
GTIN	4017918080822
Weight per piece (including packing)	161 g
Weight per piece (excluding packing)	144.848 g
Customs tariff number	85364900
Country of origin	DE

EMG 45-ELR3/1,5 - Load relay



2942739

<https://www.phoenixcontact.com/us/products/2942739>

Technical data

Product properties

Product type	Solid-state contactor
Operating mode	100% operating factor

Insulation characteristics: Air clearances and creepage distances between the power circuits

Insulation	Basic insulation
------------	------------------

Electrical properties

Number of phases	3
Maximum power dissipation for nominal condition	6 W
Mains type	3-phase
Test voltage (Input/output)	3.5 kV (50 Hz, 60 s)

Input data

Control

Input name	Control input right/left
Typical input current at U_N	20 mA
Rated actuating voltage U_C	24 V DC
Triggering voltage range	19.2 V DC ... 28.8 V DC
Voltage range with reference to U_C	0.8 ... 1.2 0.8 ... 1.2
Reaction time in normal load operation	20 ms 20 ms
Protective circuit	Reverse polarity protection; Series polarity protection diode Surge protection
Status display	LED (yellow)
Transmission frequency	1 Hz (with ohmic load) 1 Hz (at $\cos \varphi = 0.5$)

Output data

AC output

Rated operating voltage U_e	400 V AC
Operating voltage range	320 V AC ... 440 V AC
Peak offstate voltage	600 V (Load relay is not suitable for the construction of reversing circuits.)
Mains frequency	50 Hz 60 Hz
Continuous load current	max. 1.5 A (see derating curve)
Load current range	50 mA ... 1.5 A (see to derating)
Leakage current	typ. 7 mA
Residual voltage	typ. 1 V

EMG 45-ELR3/1,5 - Load relay



2942739

<https://www.phoenixcontact.com/us/products/2942739>

Surge current	100 A (tp = 10 ms, at 25 °C)
Protective circuit	RC element; RC element
	Surge protection

Connection data

Control circuits

Connection method	Screw connection
Stripping length	8 mm
Screw thread	M3
Conductor cross-section rigid	0.2 mm ² ... 4 mm ²
Conductor cross-section flexible	0.2 mm ² ... 2.5 mm ²
Conductor cross-section AWG	24 ... 12

Load circuit

Connection method	Screw connection
Stripping length	8 mm
Screw thread	M3
Conductor cross-section rigid	0.2 mm ² ... 4 mm ²
Conductor cross-section flexible	0.2 mm ² ... 2.5 mm ²
Conductor cross-section AWG	24 ... 12

Dimensions

Width	45 mm
Height	75 mm
Depth	82.5 mm

Material specifications

Color	green (RAL 6021)
-------	------------------

Environmental and real-life conditions

Ambient conditions

Degree of protection	IP20
Ambient temperature (operation)	-20 °C ... 55 °C
Ambient temperature (storage/transport)	-20 °C ... 70 °C

Standards and regulations

Air clearances and creepage distances between the power circuits

Standards/regulations	EN 50178
-----------------------	----------

EMC regulations

Standards/regulations	EN 61000-6-2
	EN 61000-6-4

Mounting

EMG 45-ELR3/1,5 - Load relay

2942739

<https://www.phoenixcontact.com/us/products/2942739>



Mounting type	DIN rail mounting
Assembly note	can be aligned with spacing > 20 mm
Mounting position	Vertical (horizontal DIN rail)

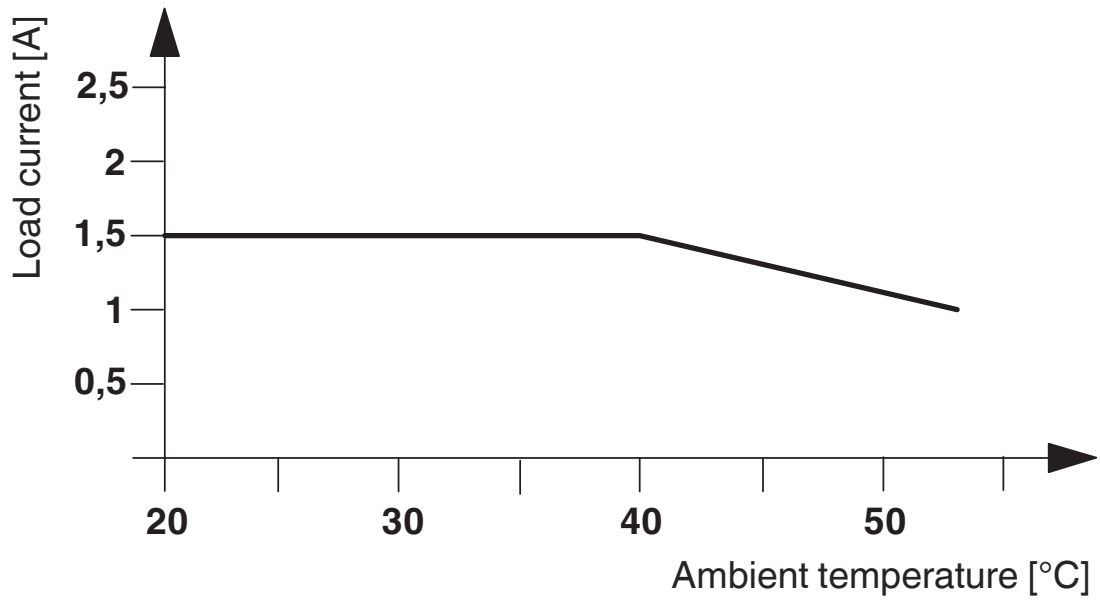
EMG 45-ELR3/1,5 - Load relay

2942739

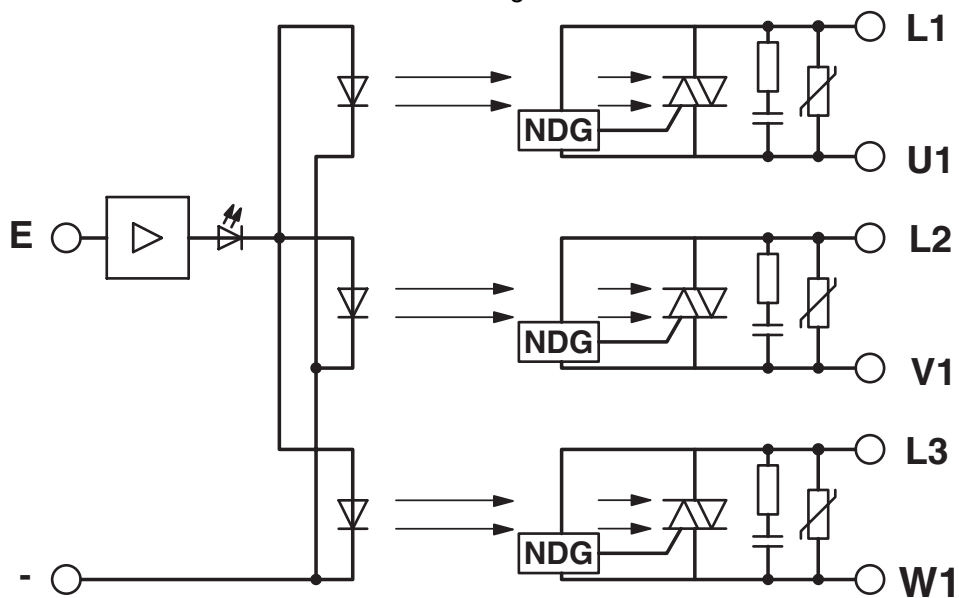
<https://www.phoenixcontact.com/us/products/2942739>

Drawings

Diagram



Block diagram



EMG 45-ELR3/1,5 - Load relay



2942739

<https://www.phoenixcontact.com/us/products/2942739>

Environmental product compliance

China RoHS

Environment friendly use period (EFUP)	EFUP-50
	An article-related China RoHS declaration table can be found in the download area for the respective article under "Manufacturer declaration". For all articles with EFUP-E, no China RoHS declaration table issued and required.

EU REACH SVHC

REACH candidate substance (CAS No.)	No substance above 0.1 wt%
-------------------------------------	----------------------------

Phoenix Contact 2026 © - all rights reserved
<https://www.phoenixcontact.com>

Phoenix Contact USA
586 Fulling Mill Road
Middletown, PA 17057, United States
(+717) 944-1300
info@phoenixcon.com