

# EMG 75-NZG/G24/2 - Power supply



2942454

<https://www.phoenixcontact.com/us/products/2942454>

Please be informed that the data shown in this PDF document is generated from our online catalog. Please find the complete data in the user documentation. Our general terms of use for downloads are valid.



Voltage regulator module, secondary switched-mode, default, input 24.5 V-29 V AC/ 27 V-30 V DC, output 24 V DC/2 A

## Commercial data

Item number	2942454
Packing unit	1 pc
Note	Made to order (non-returnable)
Sales key	CM11
Product key	CMPL93
GTIN	4017918080747
Weight per piece (including packing)	290.1 g
Weight per piece (excluding packing)	278.2 g
Customs tariff number	85044082
Country of origin	DE

# EMG 75-NZG/G24/2 - Power supply



2942454

<https://www.phoenixcontact.com/us/products/2942454>

## Technical data

### Input data

Nominal input voltage range	24.5 V AC ... 29 V AC
AC frequency range	50 Hz ... 60 Hz
Nominal power consumption	approx. 60 VA
Input fuse	4 A (slow-blow TR 5, internal, solderable)

### Output data

Nominal output voltage	24 V DC $\pm 2\%$ (settable from 5.1 V DC ... 24.5 V DC)
Nominal output current ( $I_N$ )	2 A
Residual ripple	$\leq 400$ mV <sub>PP</sub>
Protective circuit	Electronic current limitation at 2.8 A; Varistor

### Connection data

#### Input

Connection method	Screw connection
Conductor cross-section, rigid min.	0.2 mm <sup>2</sup>
Conductor cross-section, rigid max.	4 mm <sup>2</sup>
Conductor cross-section flexible min.	0.2 mm <sup>2</sup>
Conductor cross-section flexible max.	2.5 mm <sup>2</sup>
Conductor cross-section AWG min.	24
Conductor cross-section AWG max.	14
Stripping length	8 mm
Screw thread	M3

#### Output

Connection method	Screw connection
Conductor cross-section, rigid min.	0.2 mm <sup>2</sup>
Conductor cross-section, rigid max.	4 mm <sup>2</sup>
Conductor cross-section flexible min.	0.2 mm <sup>2</sup>
Conductor cross-section flexible max.	2.5 mm <sup>2</sup>
Conductor cross-section AWG min.	24
Conductor cross-section AWG max.	14
Stripping length	8 mm
Screw thread	M3

### Signaling

Operating voltage display	Green LED
---------------------------	-----------

### Product properties

Product type	Power supply
Operating mode	100% operating factor

# EMG 75-NZG/G24/2 - Power supply



2942454

<https://www.phoenixcontact.com/us/products/2942454>

## Dimensions

Width	75 mm
Height	70.5 mm
Depth	75 mm

## Mounting

Assembly note	can be aligned with spacing = 5 mm
Mounting position	On horizontal DIN rail

## Environmental and real-life conditions

### Ambient conditions

Degree of protection	IP20
Ambient temperature (operation)	0 °C ... 55 °C

# EMG 75-NZG/G24/2 - Power supply

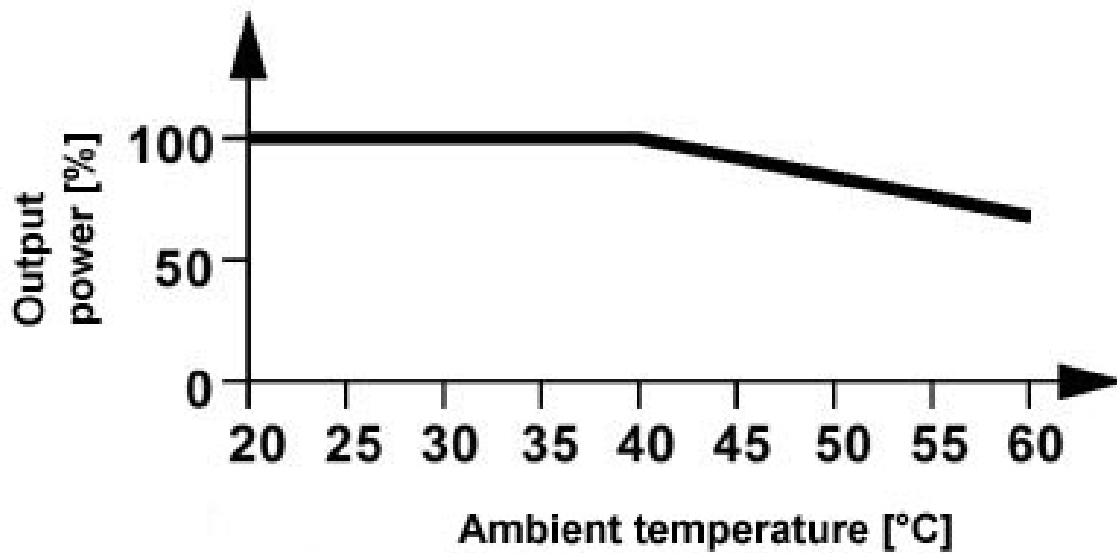


2942454

<https://www.phoenixcontact.com/us/products/2942454>

## Drawings

### Diagram

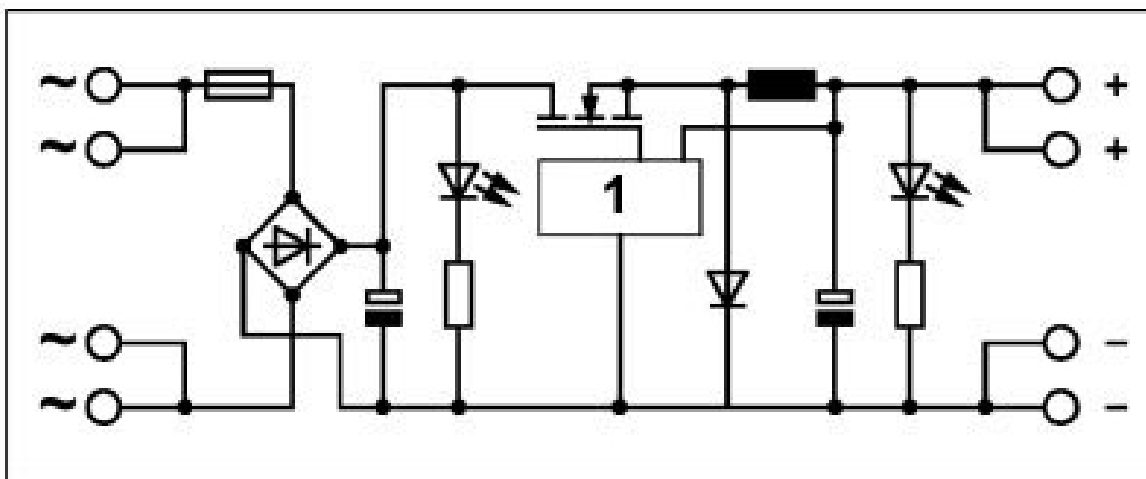


# EMG 75-NZG/G24/2 - Power supply

2942454

<https://www.phoenixcontact.com/us/products/2942454>

Circuit diagram



1 = switched-mode regulator

# EMG 75-NZG/G24/2 - Power supply



2942454

<https://www.phoenixcontact.com/us/products/2942454>

## Environmental product compliance

### EU RoHS

Fulfills EU RoHS substance requirements	Yes, No exemptions
---	--------------------

### China RoHS

Environment friendly use period (EFUP)	EFUP-25
	An article-related China RoHS declaration table can be found in the download area for the respective article under "Manufacturer declaration". For all articles with EFUP-E, no China RoHS declaration table issued and required.

### EU REACH SVHC

REACH candidate substance (CAS No.)	No substance above 0.1 wt%
-------------------------------------	----------------------------

Phoenix Contact 2026 © - all rights reserved

<https://www.phoenixcontact.com>

Phoenix Contact USA  
586 Fulling Mill Road  
Middletown, PA 17057, United States  
(+717) 944-1300  
[info@phoenixcon.com](mailto:info@phoenixcon.com)