

# EMG 75-NZG/G12/2 - Power supply



2941057

<https://www.phoenixcontact.com/us/products/2941057>

Please be informed that the data shown in this PDF document is generated from our online catalog. Please find the complete data in the user documentation. Our general terms of use for downloads are valid.



Voltage regulator module, secondary switched-mode, default, input 17 V-29 V AC/ 23 V-30 V DC, output 12 V DC/2 A

## Commercial data

Item number	2941057
Packing unit	1 pc
Note	Made to order (non-returnable)
Sales key	CM11
Product key	CMPL92
GTIN	4017918104535
Weight per piece (including packing)	287.8 g
Weight per piece (excluding packing)	287 g
Customs tariff number	85044082
Country of origin	DE

# EMG 75-NZG/G12/2 - Power supply



2941057

<https://www.phoenixcontact.com/us/products/2941057>

## Technical data

### Product properties

Operating mode	100% operating factor
----------------	-----------------------

### Input data

Nominal input voltage range	17 V AC ... 29 V AC
Input voltage range	23 V DC ... 30 V DC
Input voltage range DC	23 V DC ... 30 V DC
AC frequency range	50 Hz ... 60 Hz
Nominal power consumption	approx. 60 VA
Input fuse	4 A (slow-blow TR 5, internal, solderable)

### Output data

Nominal output voltage	12 V DC $\pm 2\%$ (settable from 5.1 V DC ... 24.5 V DC)
Nominal output current ( $I_N$ )	2 A
Residual ripple	$\leq 400$ mV <sub>PP</sub>
Protective circuit	Electronic current limitation at 2.8 A; Varistor

### Connection data

#### Input

Connection method	Screw connection
Conductor cross-section, rigid min.	0.2 mm <sup>2</sup>
Conductor cross-section, rigid max.	4 mm <sup>2</sup>
Conductor cross-section flexible min.	0.2 mm <sup>2</sup>
Conductor cross-section flexible max.	2.5 mm <sup>2</sup>
Conductor cross-section AWG min.	24
Conductor cross-section AWG max.	14
Stripping length	8 mm
Screw thread	M3

#### Output

Connection method	Screw connection
Conductor cross-section, rigid min.	0.2 mm <sup>2</sup>
Conductor cross-section, rigid max.	4 mm <sup>2</sup>
Conductor cross-section flexible min.	0.2 mm <sup>2</sup>
Conductor cross-section flexible max.	2.5 mm <sup>2</sup>
Conductor cross-section AWG min.	24
Conductor cross-section AWG max.	14
Stripping length	8 mm
Screw thread	M3

### Signaling

Operating voltage display	Green LED
---------------------------	-----------

# EMG 75-NZG/G12/2 - Power supply



2941057

<https://www.phoenixcontact.com/us/products/2941057>

## Dimensions

Width	75 mm
Height	70.5 mm
Depth	75 mm

## Environmental and real-life conditions

### Ambient conditions

Degree of protection	IP20
Ambient temperature (operation)	0 °C ... 55 °C

## Mounting

Assembly note	can be aligned with spacing = 5 mm
Mounting position	On horizontal DIN rail

# EMG 75-NZG/G12/2 - Power supply

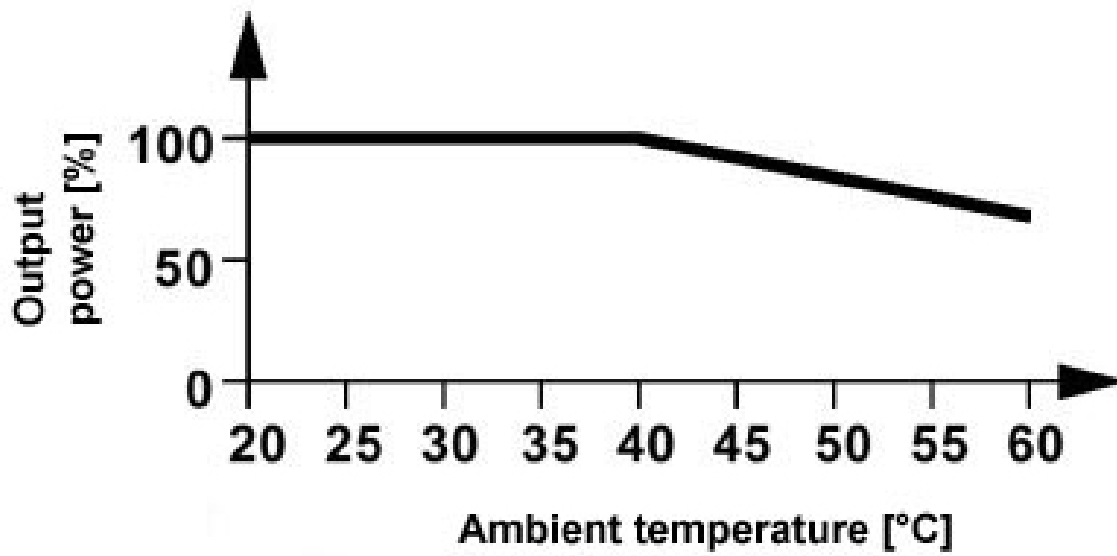


2941057

<https://www.phoenixcontact.com/us/products/2941057>

## Drawings

### Diagram



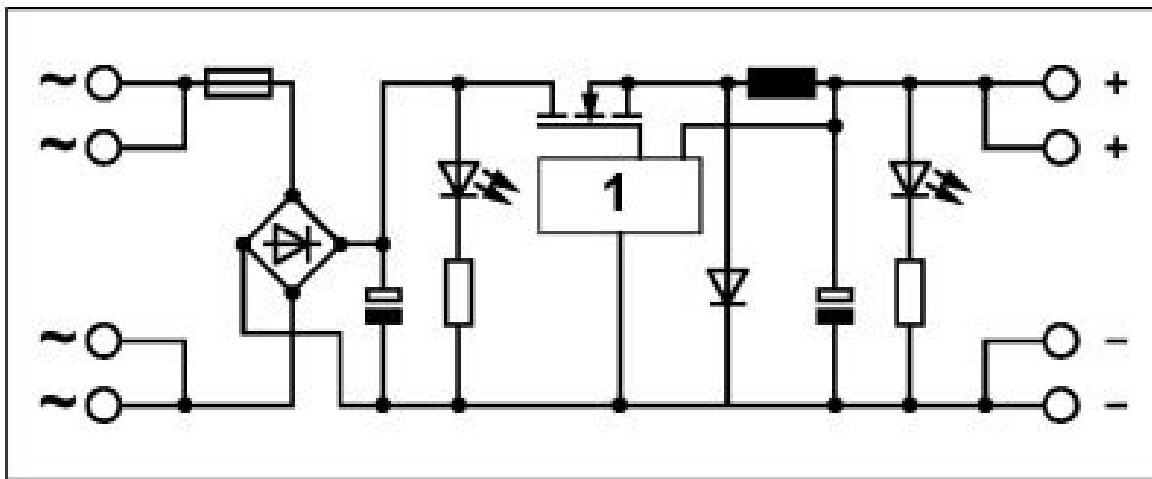
# EMG 75-NZG/G12/2 - Power supply

2941057

<https://www.phoenixcontact.com/us/products/2941057>



Circuit diagram



1 = switched-mode regulator

# EMG 75-NZG/G12/2 - Power supply



2941057

<https://www.phoenixcontact.com/us/products/2941057>

## Environmental product compliance

### EU RoHS

Fulfills EU RoHS substance requirements	Yes, No exemptions
---	--------------------

### EU REACH SVHC

REACH candidate substance (CAS No.)	No substance above 0.1 wt%
-------------------------------------	----------------------------

Phoenix Contact 2026 © - all rights reserved

<https://www.phoenixcontact.com>

Phoenix Contact USA  
586 Fulling Mill Road  
Middletown, PA 17057, United States  
(+717) 944-1300  
[info@phoenixcon.com](mailto:info@phoenixcon.com)