

EG 45-PS-230AC/ 5DC/250 - Power supply



2940676

<https://www.phoenixcontact.com/us/products/2940676>

Please be informed that the data shown in this PDF document is generated from our online catalog. Please find the complete data in the user documentation. Our general terms of use for downloads are valid.



DIN rail power supply unit, secondary-switched, input 230 V AC, output 4-13 V DC/250 mA, pre-setting 5 V DC

The figure shows version EG 45-PS-120AC/ 5DC/250

Commercial data

Item number	2940676
Packing unit	1 pc
Note	Made to order (non-returnable)
Sales key	CM11
Product key	CMPL11
GTIN	4017918080198
Weight per piece (including packing)	533.1 g
Weight per piece (excluding packing)	533.1 g
Customs tariff number	85044082
Country of origin	DE

Technical data

Product properties

Operating mode	100% operating factor
----------------	-----------------------

Electrical properties

Test voltage input/output	4 kV AC
---------------------------	---------

Input data

Input voltage	230 V AC
Voltage type of supply voltage	AC
AC frequency range	50 Hz ... 60 Hz
Mains buffering time	35 ms
Current consumption	approx. 33 mA
Nominal power consumption	approx. 8 VA
Input fuse	0.4 A (slow-blow TR 5, internal, solderable)

Output data

Nominal output voltage	4 V DC $\pm 2\%$ (can be set up to 13 V DC. Default 5 V DC $\pm 4\%$)
Nominal output current (I_N)	250 mA
Residual ripple	< 100 mV _{PP}
Short-circuit-proof	yes
No-load proof	yes
Protective circuit	Electronic disconnect at 1.3 x I _N ; Varistor

Connection data

Input

Connection method	COMBICON plug-in screw terminal block
Conductor cross-section, rigid min.	0.2 mm ²
Conductor cross-section, rigid max.	2.5 mm ²
Conductor cross-section flexible min.	0.2 mm ²
Conductor cross-section flexible max.	2.5 mm ²
Conductor cross-section AWG min.	24
Conductor cross-section AWG max.	14
Stripping length	8 mm
Screw thread	M3

Output

Connection method	COMBICON plug-in screw terminal block
Conductor cross-section, rigid min.	0.2 mm ²
Conductor cross-section, rigid max.	2.5 mm ²
Conductor cross-section flexible min.	0.2 mm ²
Conductor cross-section flexible max.	2.5 mm ²
Conductor cross-section AWG min.	24

EG 45-PS-230AC/ 5DC/250 - Power supply



2940676

<https://www.phoenixcontact.com/us/products/2940676>

Conductor cross-section AWG max.	14
Stripping length	8 mm
Screw thread	M3

Dimensions

Width	45 mm
Height	107 mm
Depth	77 mm

Environmental and real-life conditions

Ambient conditions

Degree of protection	IP20
Ambient temperature (operation)	0 °C ... 60 °C

Approvals

Conformity/Approvals

SIL in accordance with IEC 61508	0
----------------------------------	---

Standards and regulations

Standards

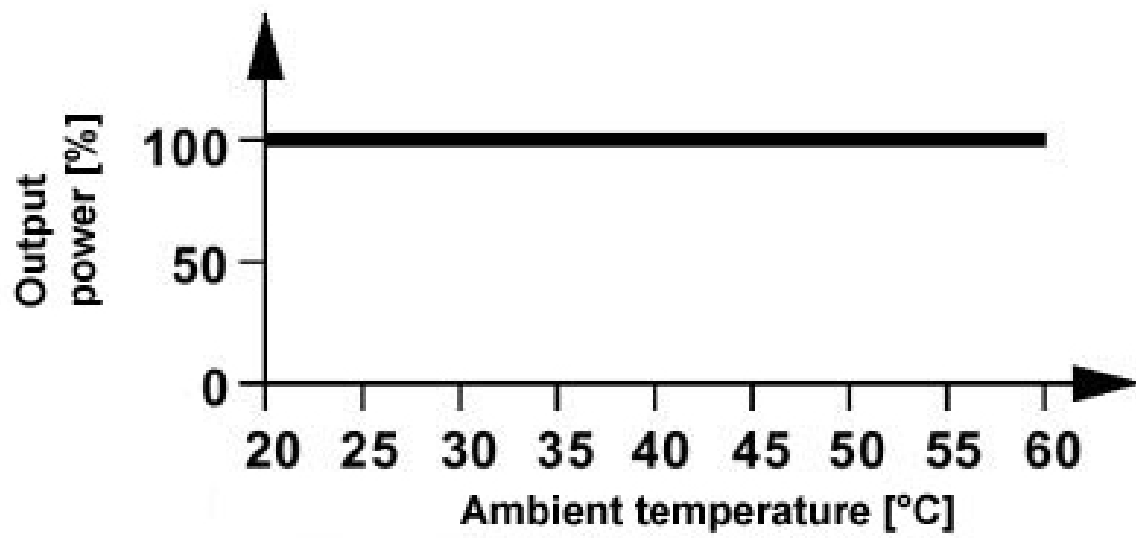
Standards/regulations	prEN 50178
	DIN EN 50178/VDE 0160
	DIN VDE 0106-101
	DIN VDE 0551

Mounting

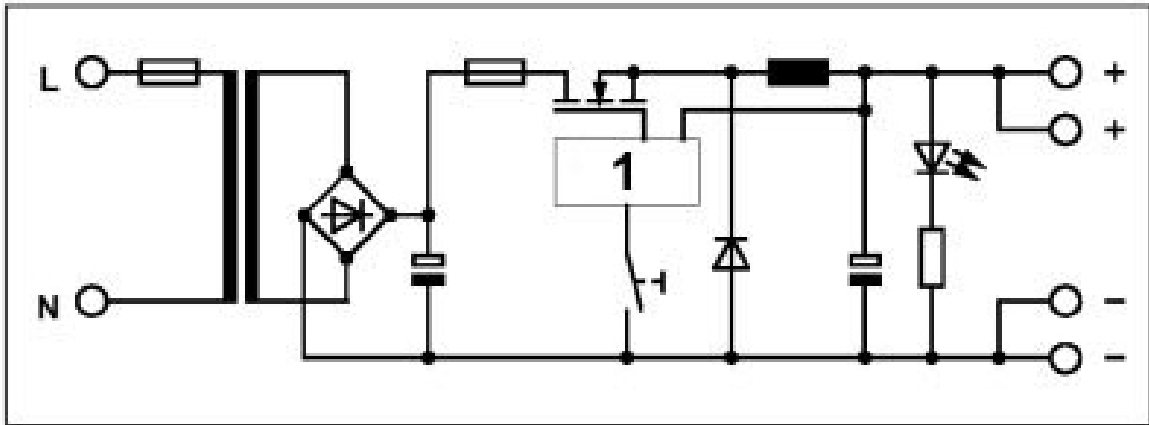
Mounting type	DIN rail mounting
Assembly note	can be aligned with spacing = 10 mm
Mounting position	On horizontal DIN rail

Drawings

Diagram



Circuit diagram



1 = switched-mode regulator

Environmental product compliance

China RoHS

Environment friendly use period (EFUP)	EFUP-25
	An article-related China RoHS declaration table can be found in the download area for the respective article under "Manufacturer declaration". For all articles with EFUP-E, no China RoHS declaration table issued and required.

EU REACH SVHC

REACH candidate substance (CAS No.)	No substance above 0.1 wt%
-------------------------------------	----------------------------

Phoenix Contact 2026 © - all rights reserved
<https://www.phoenixcontact.com>

Phoenix Contact USA
586 Fulling Mill Road
Middletown, PA 17057, United States
(+717) 944-1300
info@phoenixcon.com