

RIF-2-RSC-LV-230AC/4X21/EX - Relay module



2909847

<https://www.phoenixcontact.com/us/products/2909847>

Please be informed that the data shown in this PDF document is generated from our online catalog. Please find the complete data in the user documentation. Our general terms of use for downloads are valid.



Pre-assembled relay module consisting of: relay base, function plug-in module, power contact relay, and retaining bracket, approval in accordance with ATEX/IECEX (Zone 2) and Ex Zone Class I, Div. 2, Screw connection, 4 changeover contacts, Varistor, Input voltage: 230 V AC

Product description

The pluggable electromechanical and solid-state relays in the RIFLINE complete product range and the base are recognized and approved in accordance with UL 508. The relevant approvals can be called up at the individual components in question.

Commercial data

| | |
|--------------------------------------|--------------------------------|
| Item number | 2909847 |
| Packing unit | 10 pc |
| Minimum order quantity | 10 pc |
| Note | Made to order (non-returnable) |
| Sales key | C465 |
| Product key | DK651A |
| GTIN | 4055626395609 |
| Weight per piece (including packing) | 114.9 g |
| Weight per piece (excluding packing) | 114.9 g |
| Customs tariff number | 85364900 |
| Country of origin | CN |

RIF-2-RSC-LV-230AC/4X21/EX - Relay module



2909847

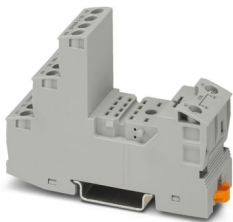
<https://www.phoenixcontact.com/us/products/2909847>

Set consists of

RIF-2-BSC/4X21/EX - Relay base

1047031

<https://www.phoenixcontact.com/us/products/1047031>



RIF-2.../EX relay base for assembling with RTIII-sealed industrial relays with 4 changeover contacts for use in zone 2, screw connection, plug-in option for input / interference suppression modules, for mounting on NS 35/7,5

REL-IR4/230AC/4X21/EX - Single relay

2909742

<https://www.phoenixcontact.com/us/products/2909742>



Pluggable industrial relay, RT III sealed with power contacts, 4x changeover contacts, mechanical switch position indicator, polarity: non-polarized, input voltage: 230 V AC, in connection with RIF-2.../EX bases approved in accordance with ATEX/IECEx (zone 2) and Ex zone class I, div. 2.

RIF-2-RSC-LV-230AC/4X21/EX - Relay module

2909847

<https://www.phoenixcontact.com/us/products/2909847>



RIF-LV-120-230 AC/110 DC - Plug-in module

2900944

<https://www.phoenixcontact.com/us/products/2900944>



Plug-in module, for mounting on RIF-1, RIF-2, RIF-3, and RIF-4, with varistor and yellow LED, input voltage: 120 V AC... 230 V AC / 110 V DC ± 20 %

RIF-RH-2 - Retaining bracket

2900954

<https://www.phoenixcontact.com/us/products/2900954>



Relay retaining bracket, with ejector function and holder for marking material, suitable for RIF-2 relay base, for industrial relay

2909847

<https://www.phoenixcontact.com/us/products/2909847>

Technical data

Product properties

| | |
|-------------------------|--|
| Product type | Relay Module |
| Product family | RIFLINE complete |
| Application | Class I, Division 2 potentially explosive areas |
| Operating mode | 100% operating factor |
| Mechanical service life | approx. 2×10^7 cycles |

Insulation characteristics

| | |
|----------------------|--------------------|
| Insulation | Basic insulation |
| Overvoltage category | III II (Zone 2) |
| Pollution degree | 2 |

Data management status

| | |
|------------------------------|------------|
| Date of last data management | 12.09.2025 |
|------------------------------|------------|

Electrical properties

| | |
|---|--|
| Maximum power dissipation for nominal condition | 1.9 W |
| Test voltage (Winding/contact) | 2.5 kV _{rms} (50 Hz, 1 min., winding/contact) |
| Test voltage (Contact/contact) | 2 kV _{rms} (50 Hz, 1 min., contact/contact) |
| Rated insulation voltage | 250 V AC |
| Rated surge voltage | 2.5 kV |

Input data

Coil side

| | |
|---|-------------------------------|
| Nominal input voltage U_N | 230 V AC |
| Input voltage range | 184 V AC ... 276 V AC (20 °C) |
| Input voltage range in reference to U_N | see diagram |
| Mains frequency | 50/60 Hz |
| Drive and function | monostable |
| Drive (polarity) | polarized |
| Typical input current at U_N | 6.5 mA |
| Typical response time | 5 ms ... 15 ms |
| Typical release time range | 5 ms ... 20 ms |
| Coil voltage | 230 V AC |
| Protective circuit | Varistor |
| Operating voltage display | Yellow LED |

Output data

Switching

RIF-2-RSC-LV-230AC/4X21/EX - Relay module



2909847

<https://www.phoenixcontact.com/us/products/2909847>

| | |
|--|-------------------------------|
| Contact switching type | 4 changeover contacts |
| Type of switch contact | Single contact |
| Contact material | AgNi |
| Maximum switching voltage | 250 V AC/DC |
| Minimum switching voltage | 5 V (24 mA) |
| Limiting continuous current | 5 A (see diagram) |
| Maximum inrush current | 16 A (20 ms, N/O contacts) |
| Min. switching current | 5 mA (24 V) |
| Interrupting rating (ohmic load) max. | 120 W (24 V DC) |
| | 124 W (48 V DC) |
| | 108 W (60 V DC) |
| | 52 W (110 V DC) |
| | 48 W (220 V DC) |
| | 1250 VA (250 V AC) |
| Utilization category CB Scheme (IEC 60947-5-1) | AC15, 1 A/240 V (N/O contact) |
| | DC13, 2 A/24 V (N/O contact) |

Connection data

| | |
|---|--|
| Connection method | Screw connection |
| Stripping length | 8 mm |
| Conductor cross-section rigid | 0.5 mm ² ... 4 mm ² |
| Conductor cross-section rigid (2 conductors with same cross section) | 0.5 mm ² ... 2.5 mm ² |
| Conductor cross-section flexible | 0.5 mm ² ... 4 mm ² |
| | 0.5 mm ² ... 4 mm ² (Ferrule with plastic sleeve) |
| Conductor cross-section flexible (2 conductors with same cross section) | 0.5 mm ² ... 2.5 mm ² |
| | 0.5 mm ² ... 1.5 mm ² (TWIN ferrule with plastic sleeve) |
| Conductor cross-section AWG | 20 ... 10 (solid) |
| | 20 ... 12 (flexible) |
| Tightening torque | 0.5 Nm ... 0.6 Nm |

Dimensions

Item dimensions

| | |
|--------|-------|
| Width | 27 mm |
| Height | 89 mm |
| Depth | 75 mm |

Material specifications

| | |
|--|-----------------|
| Color | gray (RAL 7042) |
| Flammability rating according to UL 94 (Housing) | V2 (Housing) |

Environmental and real-life conditions

Ambient conditions

| | |
|-----------------------------------|-------------------|
| Degree of protection (Relay base) | IP20 (Relay base) |
|-----------------------------------|-------------------|

RIF-2-RSC-LV-230AC/4X21/EX - Relay module



2909847

<https://www.phoenixcontact.com/us/products/2909847>

| | |
|---|------------------|
| Degree of protection (Relay) | RT III (Relay) |
| Ambient temperature (operation) | -40 °C ... 50 °C |
| Ambient temperature (storage/transport) | -40 °C ... 85 °C |

Approvals

ATEX

| | |
|----------------|----------------------------|
| Identification | ⊕ II 3G Ex ec nC IIC T4 Gc |
| Certificate | IBExU17ATEXB014X |

UKCA Ex (UKEX)

| | |
|----------------|----------------------------|
| Identification | ⊕ II 3G Ex ec nC IIC T4 Gc |
| Certificate | PxclF21UKEX2909741X |

IECEX

| | |
|----------------|--------------------|
| Identification | Ex ec nC IIC T4 Gc |
| Certificate | IECEX IBE 17.0032X |

UL, USA/Canada

| | |
|----------------|---------------------------------------|
| Identification | Class I, Div. 2, Groups A, B, C, D T4 |
| | Class I, Zone 2, Group IIC |

Corrosive gas test

| | |
|----------------|----------------------------|
| Identification | ISA-S71.04. G3 Harsh Group |
| | EN 60068-2-60 |

Standards and regulations

| | |
|-----------------------|---------------|
| Standards/regulations | IEC 60947-5-1 |
|-----------------------|---------------|

Ex zone

| | |
|-----------------------|-----------------|
| Standards/regulations | EN/IEC 60079-0 |
| | EN/IEC 60079-7 |
| | EN/IEC 60079-15 |

Mounting

| | |
|-------------------|---------------------------|
| Mounting type | DIN rail mounting |
| Assembly note | in rows with zero spacing |
| Mounting position | any |

Drawings

Diagram

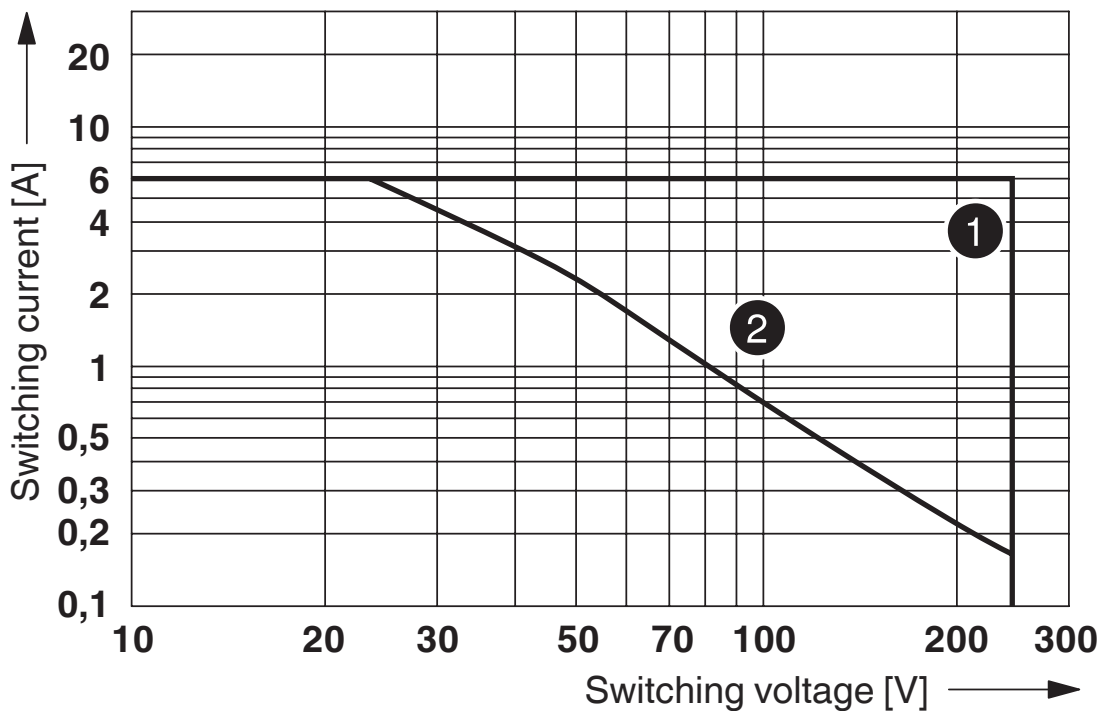


① DC coil (observe contact derating)

② AC coil (observe contact derating)

Operating voltage range

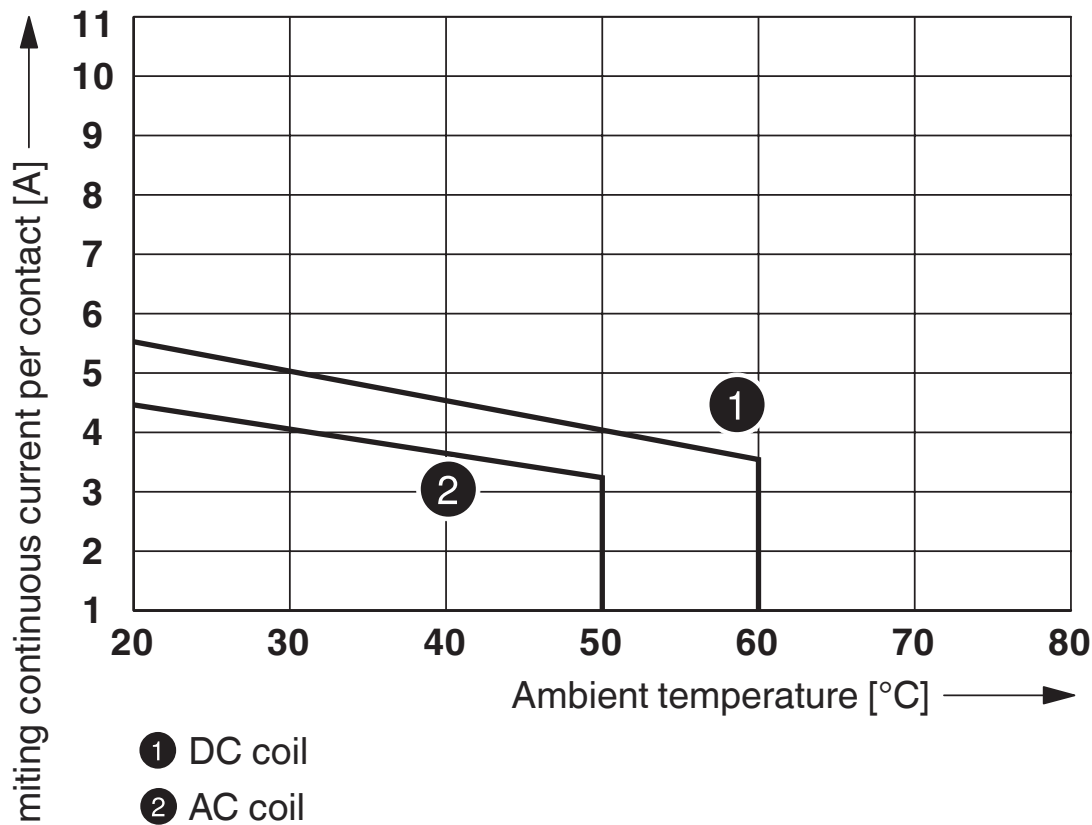
Diagram



- ① AC, ohmic load
- ② DC, ohmic load

Interrupting rating

Diagram



Contact derating

Diagram



① 250 V AC, Ohmic load

Electrical service life

Diagram



Service life reduction factor



Permissible humidity for operation and storage.

The maximum permissible ambient temperature as specified in the data sheet must be observed.

Area A: Ice buildup at ambient temperatures $\leq 0^\circ\text{C}$ must be prevented

Area B: Condensation at ambient temperatures $> 0^\circ\text{C}$ must be prevented

On 30 full days that are naturally distributed across an entire year, a humidity level of 95% is permissible at an ambient temperature $\leq 25^\circ\text{C}$.

RIF-2-RSC-LV-230AC/4X21/EX - Relay module



2909847

<https://www.phoenixcontact.com/us/products/2909847>

Circuit diagram



AC coils

RIF-2-RSC-LV-230AC/4X21/EX - Relay module



2909847

<https://www.phoenixcontact.com/us/products/2909847>

Classifications

ECLASS

ECLASS-13.0

27371601

ETIM

ETIM 9.0

EC001437

UNSPSC

UNSPSC 21.0

39122300

2909847

<https://www.phoenixcontact.com/us/products/2909847>

Environmental product compliance

EU RoHS

| | |
|---|--------------|
| Fulfills EU RoHS substance requirements | Yes |
| Exemption | 7(a), 7(c)-I |

China RoHS

| | |
|--|---|
| Environment friendly use period (EFUP) | EFUP-50 |
| | An article-related China RoHS declaration table can be found in the download area for the respective article under "Manufacturer declaration". For all articles with EFUP-E, no China RoHS declaration table issued and required. |

EU REACH SVHC

| | |
|-------------------------------------|--------------------------------------|
| REACH candidate substance (CAS No.) | Lead(CAS: 7439-92-1) |
| SCIP | cbd223de-7ad4-43ce-9054-2ae0f4a1f94a |

Phoenix Contact 2026 © - all rights reserved

<https://www.phoenixcontact.com>

Phoenix Contact USA
586 Fulling Mill Road
Middletown, PA 17057, United States
(+717) 944-1300
info@phoenixcon.com