

PLT-SEC-T3-BE-FM-UT - Type 3 surge protection base element

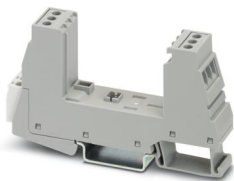


2907924

<https://www.phoenixcontact.com/us/products/2907924>

Please be informed that the data shown in this PDF document is generated from our online catalog. Please find the complete data in the user documentation. Our general terms of use for downloads are valid.

Base element for protective plugs from the PLT-SEC-...-UT/PT product series with remote indication contact.



Commercial data

Item number	2907924
Packing unit	10 pc
Minimum order quantity	1 pc
Sales key	CL19
Product key	CL14A2
GTIN	4055626257709
Weight per piece (including packing)	52.15 g
Weight per piece (excluding packing)	48 g
Customs tariff number	85363030
Country of origin	DE

PLT-SEC-T3-BE-FM-UT - Type 3 surge protection base element

2907924

<https://www.phoenixcontact.com/us/products/2907924>

Technical data

Product properties

Product type	Base element
Product family	SEC Family
IEC power supply system	TN-S TT
Type	DIN rail module, two-section, divisible
Number of positions	2
Surge protection fault message	Remote indication contact

Insulation characteristics

Overvoltage category	III
Pollution degree	2
IEC test classification	II / III T2 / T3
EN type	T2 / T3
Number of ports	One

Electrical properties

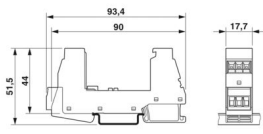
Indicator/remote signaling

Connection name	Remote fault indicator contact
Switching function	Changeover contact
Operating voltage	250 V AC 125 V DC (200 mA DC)
Operating current	0.5 A AC 0.5 A DC (75 V DC)

Connection data

Connection method	Screw connection
Screw thread	M3
Tightening torque	0.5 Nm
Conductor cross-section flexible	0.2 mm ² ... 2.5 mm ²
Conductor cross-section rigid	0.2 mm ² ... 4 mm ²
Conductor cross-section AWG	24 ... 12

Dimensions

Dimensional drawing	
---------------------	--

PLT-SEC-T3-BE-FM-UT - Type 3 surge protection base element



2907924

<https://www.phoenixcontact.com/us/products/2907924>

Width	17.7 mm
Height	93.4 mm
Depth	51.5 mm (incl. DIN rail 7.5 mm)
Horizontal pitch	1 Div.

Material specifications

Color (Male connector)	light gray (RAL 7035)
Color (Base element)	gray (RAL 7042)
Flammability rating according to UL 94	V-0
CTI value of material	600
Insulating material	PA 6.6-FR 20 % GF PA 6.6-FR
Housing material	PA 6.6-FR 20 % GF PA 6.6-FR

Mechanical properties

Mechanical data

Open side panel	No
-----------------	----

Protective circuit

Direction of action	1L-N & N-PE
Nominal voltage U_N	240 V AC (TN-S) 240 V AC (TT)
Nominal frequency f_N	50 Hz (60 Hz)
Maximum continuous operating voltage U_C	264 V AC
Rated load current I_L	26 A (at 30 °C)
Short-circuit current rating I_{SCCR}	10 kA AC
Maximum backup fuse for through wiring	25 A (gG / B / C)
Max. backup fuse with branch wiring	depends on the plug used

Additional technical data

Short-circuit current rating I_{SCCR}	max. 5 kA DC (depends on the plug used)
Maximum continuous operating voltage U_C	240 V DC

Environmental and real-life conditions

Ambient conditions

Degree of protection	IP20
Ambient temperature (operation)	-40 °C ... 80 °C
Ambient temperature (storage/transport)	-40 °C ... 80 °C
Altitude	≤ 2000 m (amsl)
Permissible humidity (operation)	5 % ... 95 %
Shock (operation)	30g (Half-sine / 11 ms / 3x ±X, ±Y, ±Z)

PLT-SEC-T3-BE-FM-UT - Type 3 surge protection base element



2907924

<https://www.phoenixcontact.com/us/products/2907924>

Vibration (operation)	5g (5 ... 500 Hz / 2.5 h / X, Y, Z)
-----------------------	-------------------------------------

Approvals

UL specifications

Nominal voltage	240 V DC
Rated load current I_L	20 A
Power distribution system	Single phase
	DC
Nominal frequency	50/60 Hz
SPD Type	ACC

UL indicator/remote signaling

Operating voltage	250 V AC (0.5 A)
DC operating voltage	12 V DC (4 A)
	24 V DC (2 A)
	48 V DC (1 A)

UL connection data

Tightening torque	4.4 lb _f -in.
Conductor cross-section AWG	16 ... 12

Standards and regulations

Standards/specifications	IEC 61643-11
Note	2011

EN 61643-11

Standards/specifications	EN 61643-11
Note	2012

Mounting

Mounting type	DIN rail: 35 mm
---------------	-----------------

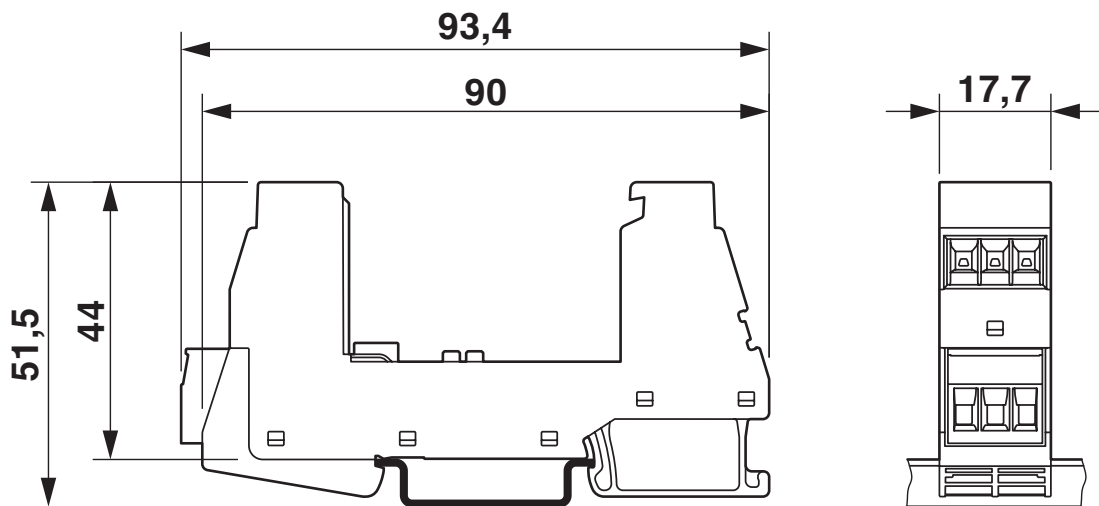
PLT-SEC-T3-BE-FM-UT - Type 3 surge protection base element

2907924

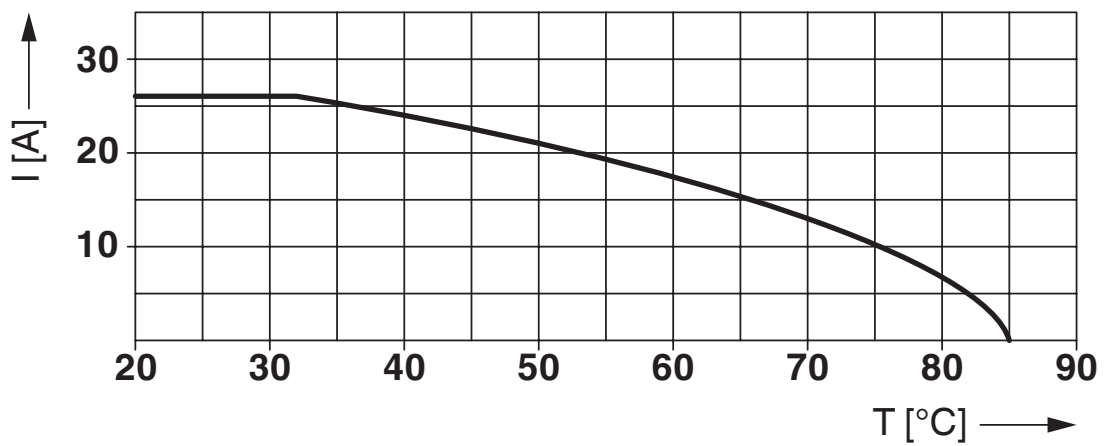
<https://www.phoenixcontact.com/us/products/2907924>

Drawings

Dimensional drawing



Diagram



Nominal current depending on ambient temperature

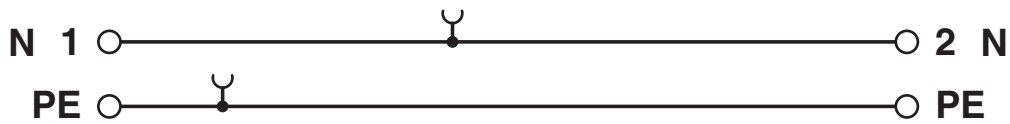
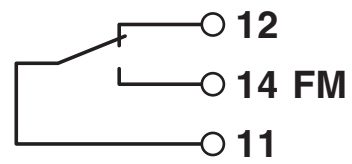
PLT-SEC-T3-BE-FM-UT - Type 3 surge protection base element



2907924

<https://www.phoenixcontact.com/us/products/2907924>

Circuit diagram



PLT-SEC-T3-BE-FM-UT - Type 3 surge protection base element



2907924

<https://www.phoenixcontact.com/us/products/2907924>

Approvals

To download certificates, visit the product detail page: <https://www.phoenixcontact.com/us/products/2907924>



cUL Recognized
Approval ID: FILE E 330181



UL Recognized
Approval ID: FILE E 330181



IECEE CB Scheme
Approval ID: NL-51083

CCA

Approval ID: NTR-NL 7676



KEMA-KEUR
Approval ID: 71-103027



CSA
Approval ID: 13631

UAE-RoHS

Approval ID: 23-10-88891

DNV

Approval ID: TAE00002U7



cUL Recognized
Approval ID: FILE E 340736



UL Recognized
Approval ID: FILE E 340736

PLT-SEC-T3-BE-FM-UT - Type 3 surge protection base element



2907924

<https://www.phoenixcontact.com/us/products/2907924>

Classifications

ECLASS

ECLASS-13.0	27171292
ECLASS-15.0	27171292

ETIM

ETIM 10.0	EC002496
-----------	----------

UNSPSC

UNSPSC 21.0	39121600
-------------	----------

PLT-SEC-T3-BE-FM-UT - Type 3 surge protection base element



2907924

<https://www.phoenixcontact.com/us/products/2907924>

Environmental product compliance

EU RoHS

Fulfills EU RoHS substance requirements	Yes, No exemptions
---	--------------------

China RoHS

Environment friendly use period (EFUP)	EFUP-E
	No hazardous substances above the limits

EU REACH SVHC

REACH candidate substance (CAS No.)	No substance above 0.1 wt%
-------------------------------------	----------------------------

Phoenix Contact 2026 © - all rights reserved
<https://www.phoenixcontact.com>

Phoenix Contact USA
586 Fulling Mill Road
Middletown, PA 17057, United States
(+717) 944-1300
info@phoenixcon.com