

ME LP - PCB

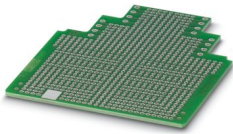
2906908

<https://www.phoenixcontact.com/us/products/2906908>



Please be informed that the data shown in this PDF document is generated from our online catalog. Please find the complete data in the user documentation. Our general terms of use for downloads are valid.

PCB, for custom fitting, with contact to DIN rail (EN 60715)



Your advantages

- Easy installation

Commercial data

Item number	2906908
Packing unit	5 pc
Minimum order quantity	1 pc
Sales key	AC08
Product key	ACHAAZ
GTIN	4017918126520
Weight per piece (including packing)	23.6 g
Weight per piece (excluding packing)	19.826 g
Customs tariff number	85340019
Country of origin	DE

ME LP - PCB

2906908

<https://www.phoenixcontact.com/us/products/2906908>



Technical data

Product properties

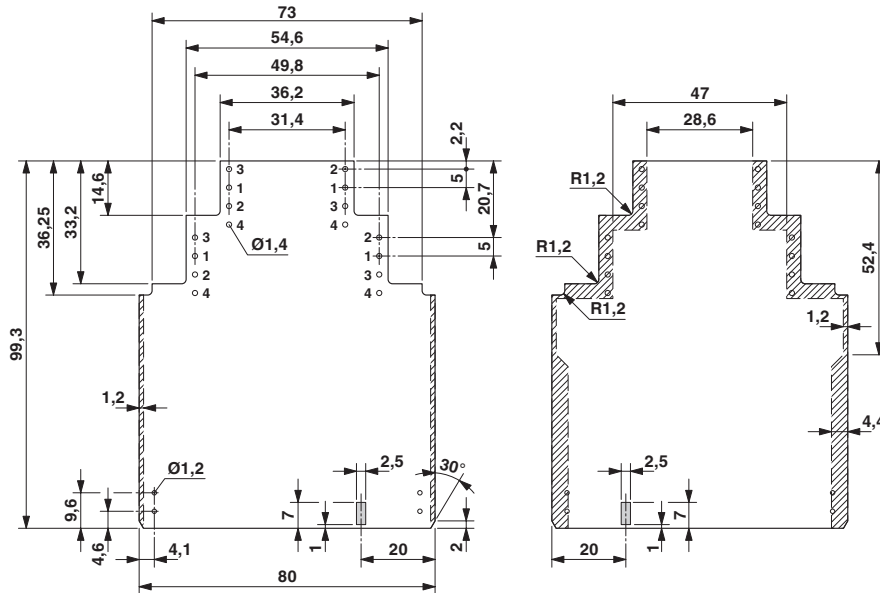
Product type	PCB
Housing type	DIN rail housing
Housing series	ME
Product family	ME

Material specifications

Color (Housing)	green (RAL 6021)
Housing material	FR 4-21

Drawings

Dimensional drawing



Dimensional drawing of the ME... printed circuit board if the double level upper part is used

ME LP - PCB

2906908

<https://www.phoenixcontact.com/us/products/2906908>



Classifications

ECLASS

ECLASS-13.0	27260692
ECLASS-15.0	27260692

ETIM

ETIM 10.0	EC001031
-----------	----------

UNSPSC

UNSPSC 21.0	31261500
-------------	----------

ME LP - PCB



2906908

<https://www.phoenixcontact.com/us/products/2906908>

Environmental product compliance

EU RoHS

Fulfills EU RoHS substance requirements	Yes, No exemptions
---	--------------------

China RoHS

Environment friendly use period (EFUP)	EFUP-E
	No hazardous substances above the limits

EU REACH SVHC

REACH candidate substance (CAS No.)	No substance above 0.1 wt%
-------------------------------------	----------------------------

Phoenix Contact 2026 © - all rights reserved
<https://www.phoenixcontact.com>

Phoenix Contact USA
586 Fulling Mill Road
Middletown, PA 17057, United States
(+717) 944-1300
info@phoenixcon.com