

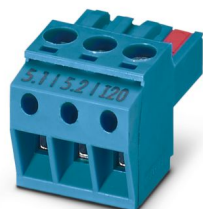
# MACX MCR-EX-I20 - Plug

2905679

<https://www.phoenixcontact.com/us/products/2905679>



Please be informed that the data shown in this PDF document is generated from our online catalog. Please find the complete data in the user documentation. Our general terms of use for downloads are valid.



Connection terminal block for current signals +20 mA ... -20 mA for safe switching of limit values, in combination with MACX...EX-T-UI... temperature transducers.

## Commercial data

Item number	2905679
Packing unit	1 pc
Minimum order quantity	1 pc
Sales key	C430
Product key	DK121Z
GTIN	4046356986700
Weight per piece (including packing)	30 g
Weight per piece (excluding packing)	30 g
Customs tariff number	85366990
Country of origin	DE

## Technical data

### Product properties

Product type	Plug
--------------	------

### Electrical properties

Maximum transmission error	1.1 %
----------------------------	-------

### Connection data

Connection method	Screw connection
Screw thread	M3
Conductor cross-section rigid	0.2 mm <sup>2</sup> ... 2.5 mm <sup>2</sup>
Conductor cross-section flexible	0.2 mm <sup>2</sup> ... 2.5 mm <sup>2</sup>
Conductor cross-section AWG	24 ... 14

### Ex data

#### Safety data

Input voltage $U_i$	30 V
Input current $I_i$	112 mA
Input power $P_i$	840 mW
Max. internal inductance $L_i$	negligible
Max. internal capacitance $C_i$	44 nF
Max. output voltage $U_o$	6 V
Max. output current $I_o$	7.4 mA
Max. output power $P_o$	11 mW

### Environmental and real-life conditions

#### Ambient conditions

Ambient temperature (operation)	-20 °C ... 65 °C
Ambient temperature (storage/transport)	-40 °C ... 85 °C
Altitude	≤ 2000 m
Permissible humidity (operation)	typ. 5 % ... 95 % (non-condensing)

### Approvals

#### CE

Certificate	CE-compliant
-------------	--------------

#### ATEX

Identification	⊕ II (1) G [Ex ia] IIC
	⊕ II (1) D [Ex ia Da] IIIC
	⊕ II 3 G Ex nA nC ic IIC T4 Gc X
Certificate	IBExU 10 ATEX 1044

# MACX MCR-EX-I20 - Plug

2905679

<https://www.phoenixcontact.com/us/products/2905679>



## Classifications

### ECLASS

ECLASS-13.0	27460202
ECLASS-15.0	27460202

### ETIM

ETIM 10.0	EC002638
-----------	----------

### UNSPSC

UNSPSC 21.0	39121400
-------------	----------

# MACX MCR-EX-I20 - Plug

2905679

<https://www.phoenixcontact.com/us/products/2905679>



## Environmental product compliance

### EU RoHS

Fulfills EU RoHS substance requirements	Yes, No exemptions
---	--------------------

### China RoHS

Environment friendly use period (EFUP)	EFUP-50
	An article-related China RoHS declaration table can be found in the download area for the respective article under "Manufacturer declaration". For all articles with EFUP-E, no China RoHS declaration table issued and required.

### EU REACH SVHC

REACH candidate substance (CAS No.)	No substance above 0.1 wt%
-------------------------------------	----------------------------

Phoenix Contact 2026 © - all rights reserved  
<https://www.phoenixcontact.com>

Phoenix Contact USA  
586 Fulling Mill Road  
Middletown, PA 17057, United States  
(+717) 944-1300  
[info@phoenixcon.com](mailto:info@phoenixcon.com)