

FLKMS-2KS50/32IM/YCS - Passive module



2901896

<https://www.phoenixcontact.com/us/products/2901896>

Please be informed that the data shown in this PDF document is generated from our online catalog. Please find the complete data in the user documentation. Our general terms of use for downloads are valid.

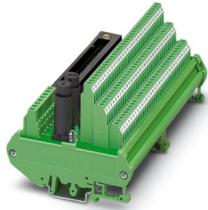


Figure shows the FLKMS-
KS50/32IM/YCS version

32-channel module with 3-conductor screw connection and redundant connector.
Suitable for Yokogawa ADV151, ADV161, ADV551, ADV561 cards.

Commercial data

Item number	2901896
Packing unit	1 pc
Minimum order quantity	1 pc
Note	Made to order (non-returnable)
Product key	DK218N
GTIN	4046356639101
Weight per piece (including packing)	603.4 g
Weight per piece (excluding packing)	603.4 g
Country of origin	DE

FLKMS-2KS50/32IM/YCS - Passive module



2901896

<https://www.phoenixcontact.com/us/products/2901896>

Technical data

Product properties

Product type	Interface module
No. of channels	32

Insulation characteristics: Air clearances and creepage distances

Insulation	Functional insulation
Overvoltage category	II
Pollution degree	2

Electrical properties

Operating voltage range	19.2 V DC ... 26.4 V DC
Fuse	2 A 5x20 (fast-blow) (F101, F102)
Current (per branch)	≤ 1 A
Current (Voltage supply)	≤ 2 A (T _A = 50 °C)
	≤ 1.8 A (T _U = 60 °C)
	≤ 1.5 A (T _U = 70 °C)

Air clearances and creepage distances

Rated insulation voltage	50 V
Rated surge voltage	0.5 kV (1.2/50 μs)

Supported controller: YOKOGAWA CS3000 CentumVP

Suitable I/O card	ADV151
	ADV161
	ADV551
	ADV561

Supported controller: YOKOGAWA STARDOM

Suitable I/O card	NFDV151
	NFDV161
	NFDV551
	NFDV561

Connection data

Connection 1 (control level)

Connection method	Yokogawa, KS compatible
Number of connections	2
Number of positions	50
Note	Usable system cables: Phoenix Contact YUC50, Yokogawa AKB331
Tightening torque	0.5 Nm
Pitch	2.54 mm

FLKMS-2KS50/32IM/YCS - Passive module



2901896

<https://www.phoenixcontact.com/us/products/2901896>

Connection 2 (field level)

Connection method	Screw connection
Stripping length	7 mm
Screw thread	M3
Number of positions	96
Conductor cross-section rigid	0.2 mm ² ... 4 mm ²
Conductor cross-section rigid (2 conductors with same cross section)	0.2 mm ² ... 1.5 mm ²
Conductor cross-section flexible	0.2 mm ² ... 2.5 mm ²
	0.25 mm ² ... 1.5 mm ² (Ferrule without plastic sleeve)
	0.25 mm ² ... 2.5 mm ² (Ferrule with plastic sleeve)
Conductor cross-section flexible (2 conductors with same cross section)	0.2 mm ² ... 1.5 mm ²
	0.2 mm ² ... 0.75 mm ² (Ferrule without plastic sleeve)
	0.5 mm ² ... 0.5 mm ² (TWIN ferrule with plastic sleeve)
Conductor cross-section AWG	24 ... 12
Tightening torque	0.5 Nm ... 0.6 Nm
Pitch	5.08 mm

Connection 3 (supply)

Connection method	Screw connection
Stripping length	8 mm
Screw thread	M3
Number of positions	8
Conductor cross-section rigid	0.2 mm ² ... 4 mm ²
Conductor cross-section rigid (2 conductors with same cross section)	0.2 mm ² ... 1.5 mm ²
Conductor cross-section flexible	0.2 mm ² ... 2.5 mm ²
	0.25 mm ² ... 2.5 mm ² (Ferrule without plastic sleeve)
	0.25 mm ² ... 2.5 mm ² (Ferrule with plastic sleeve)
Conductor cross-section flexible (2 conductors with same cross section)	0.2 mm ² ... 1.5 mm ²
	0.25 mm ² ... 0.75 mm ² (Ferrule without plastic sleeve)
	0.5 mm ² ... 1.5 mm ² (TWIN ferrule with plastic sleeve)
Conductor cross-section AWG	24 ... 12
Tightening torque	0.5 Nm ... 0.6 Nm
Pitch	5.08 mm

Signaling

Status display present	yes, for power supply
Operating voltage display	Green LED

Dimensions

Item dimensions

Width	180.3 mm
Height	111.8 mm

FLKMS-2KS50/32IM/YCS - Passive module



2901896

<https://www.phoenixcontact.com/us/products/2901896>

Depth	69.2 mm
-------	---------

Environmental and real-life conditions

Ambient conditions

Degree of protection (Module)	IP00
Degree of protection (Installation location)	≤ IP54
Ambient temperature (operation)	-20 °C ... 70 °C
Ambient temperature (storage/transport)	-20 °C ... 70 °C
Altitude	≤ 2000 m

Approvals

UKCA

Certificate	UKCA-compliant
-------------	----------------

Standards and regulations

Air clearances and creepage distances

Standards/regulations	EN IEC 60664-1
-----------------------	----------------

Mounting

Mounting type	DIN rail mounting
Mounting position	any

Notes

Notes on operation	For proper use, the specifications of the installation directive (see Downloads) must be observed. For applications or use with third-party products, the specifications, and the safety and warning instructions of the respective third-party manufacturer must also be met.
--------------------	--

FLKMS-2KS50/32IM/YCS - Passive module

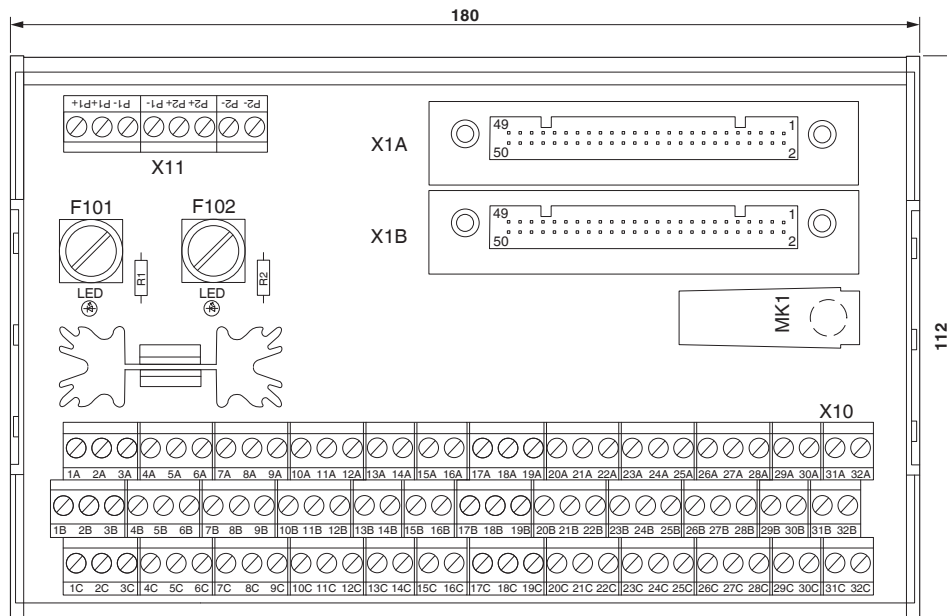


2901896

<https://www.phoenixcontact.com/us/products/2901896>

Drawings

Dimensional drawing



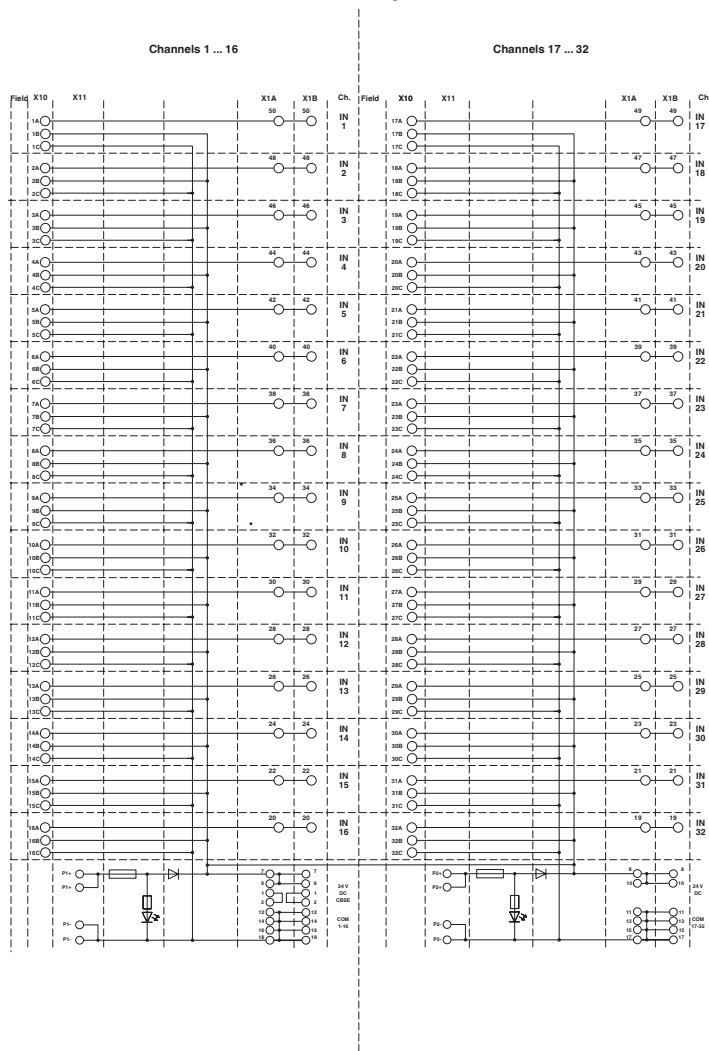
FLKMS-2KS50/32IM/YCS - Passive module

2901896

<https://www.phoenixcontact.com/us/products/2901896>



Circuit diagram



FLKMS-2KS50/32IM/YCS - Passive module



2901896

<https://www.phoenixcontact.com/us/products/2901896>

Classifications

ECLASS

ECLASS-13.0	27141152
ECLASS-15.0	27141152

ETIM

ETIM 10.0	EC002780
-----------	----------

UNSPSC

UNSPSC 21.0	39121400
-------------	----------

2901896

<https://www.phoenixcontact.com/us/products/2901896>

Environmental product compliance

EU RoHS

Fulfills EU RoHS substance requirements	Yes
Exemption	7(a), 7(c)-I

China RoHS

Environment friendly use period (EFUP)	EFUP-50
	An article-related China RoHS declaration table can be found in the download area for the respective article under "Manufacturer declaration". For all articles with EFUP-E, no China RoHS declaration table issued and required.

EU REACH SVHC

REACH candidate substance (CAS No.)	Hexahydromethylphthalic anhydride(CAS: n/a)
	Lead(CAS: 7439-92-1)
SCIP	23028ed7-0b4c-4712-b127-92d61c5f3409

Phoenix Contact 2026 © - all rights reserved
<https://www.phoenixcontact.com>

Phoenix Contact USA
 586 Fulling Mill Road
 Middletown, PA 17057, United States
 (+717) 944-1300
info@phoenixcon.com