

# IB IL AI/TEMP 4 RTD-PAC - Analog module

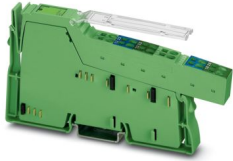


2897952

<https://www.phoenixcontact.com/us/products/2897952>

Please be informed that the data shown in this PDF document is generated from our online catalog. Please find the complete data in the user documentation. Our general terms of use for downloads are valid.

Inline, Analog input terminal, 0 V ... 10 V, transmission speed in the local bus: 500 kbps, degree of protection: IP20, including Inline connectors and marking fields



## Product description

The terminal is designed for use within an Inline station. The terminal has four inputs that can be configured independently of one another for measuring voltages or resistances or for RTDs. The sensors are connected using 2-conductor technology, so that a nominal resistance of at least 1000  $\Omega$  is recommended when sensors with a relatively small temperature coefficient (e.g., platinum sensors) are used. Resistance measurement with conversion into temperature values can be used for temperature measurement with NTC resistors. The advantage of these resistors is their large temperature coefficient.

## Your advantages

- Voltage inputs 0 V ... 10 V
- Inputs for temperature measurements
- Connection of sensors in 2-conductor technology
- Diagnostic and status indicators

## Commercial data

Item number	2897952
Packing unit	1 pc
Minimum order quantity	1 pc
Sales key	DR18
Product key	DRHABA
GTIN	4046356331739
Weight per piece (including packing)	89.2 g
Weight per piece (excluding packing)	68 g
Customs tariff number	85389099
Country of origin	DE

# IB IL AI/TEMP 4 RTD-PAC - Analog module



2897952

<https://www.phoenixcontact.com/us/products/2897952>

## Technical data

### Dimensions

Width	12.2 mm
Height	140.5 mm
Depth	71.5 mm

### Notes

#### Note on application

Note on application	Only for industrial use
---------------------	-------------------------

#### Utilization restriction

EMC note	EMC: class A product, see manufacturer's declaration in the download area
----------	---

### Material specifications

Color (Housing)	green (RAL 6021)
-----------------	------------------

### Interfaces

#### Inline local bus

Connection method	Inline data jumper
Transmission speed	500 kbps
Transmission physics	Copper

### System properties

#### Programming data (LocalbusSlave)

Length code (hex)	02
ID code (dec.)	95
Length code (dec)	02
Process data channel	32 bit
Input address area	4 Byte
Output address area	4 Byte
Parameter channel (PCP)	0 Byte
Register length (bus)	32 bit

#### Fieldbus data telegram

Required parameter data	1 Byte
Required configuration data	5 Byte

### Input data

#### Analog:

Voltage input signal	0 V ... 10 V
Data formats	IB IL, IB ST, standardized representation, S7 compatible

# IB IL AI/TEMP 4 RTD-PAC - Analog module



2897952

<https://www.phoenixcontact.com/us/products/2897952>

Filtering	None or mean value generation over 8 or 32 measured values
Limit frequency (3 dB)	6.6 Hz
Measured value resolution	16 bits (15 bits + sign bit)

## Analog:

Input filter time	150 ms
	1200 ms
	4800 ms (adjustable)
Linear resistance measuring range	0 Ω ... 3 kΩ
	0 Ω ... 300 kΩ

## Product properties

Product type	I/O component
Product family	Inline
Type	modular
Installation location	Control cabinet
Scope of supply	including Inline connectors and marking fields

## Insulation characteristics

Overvoltage category	II (IEC 60664-1, EN 60664-1)
Pollution degree	2 (IEC 60664-1, EN 60664-1)

## Electrical properties

### Potentials: Communications power ( $U_L$ )

Current draw	max. 65 mA
--------------	------------

## Connection data

### Connection technology

Connection name	Inline connector
-----------------	------------------

### Inline connector

Connection method	Spring-cage connection
Conductor cross-section, rigid	0.08 mm <sup>2</sup> ... 1.5 mm <sup>2</sup>
Conductor cross-section, flexible	0.08 mm <sup>2</sup> ... 1.5 mm <sup>2</sup>
Conductor cross-section AWG	28 ... 16
Stripping length	8 mm

## Environmental and real-life conditions

### Ambient conditions

Degree of protection	IP20
Air pressure (operation)	70 kPa ... 106 kPa (up to 3000 m above sea level)
Air pressure (storage/transport)	70 kPa ... 106 kPa (up to 3000 m above sea level)
Ambient temperature (storage/transport)	-25 °C ... 85 °C
Permissible humidity (operation)	10 % ... 95 % (non-condensing)

# IB IL AI/TEMP 4 RTD-PAC - Analog module



2897952

<https://www.phoenixcontact.com/us/products/2897952>

Permissible humidity (storage/transport)	10 % ... 95 % (non-condensing)
--	--------------------------------

## Standards and regulations

Protection class	III (IEC 61140, EN 61140, VDE 0140-1)
------------------	---------------------------------------

## Mounting

Mounting type	DIN rail mounting
---------------	-------------------

# IB IL AI/TEMP 4 RTD-PAC - Analog module



2897952

<https://www.phoenixcontact.com/us/products/2897952>

## Classifications

### ECLASS

ECLASS-13.0	27242601
ECLASS-15.0	27242601

### ETIM

ETIM 10.0	EC001596
-----------	----------

### UNSPSC

UNSPSC 21.0	32151600
-------------	----------

2897952

<https://www.phoenixcontact.com/us/products/2897952>

## Environmental product compliance

### EU RoHS

Fulfills EU RoHS substance requirements	Yes, No exemptions
---	--------------------

### China RoHS

Environment friendly use period (EFUP)	EFUP-50
	An article-related China RoHS declaration table can be found in the download area for the respective article under "Manufacturer declaration". For all articles with EFUP-E, no China RoHS declaration table issued and required.

### EU REACH SVHC

REACH candidate substance (CAS No.)	No substance above 0.1 wt%
-------------------------------------	----------------------------

Phoenix Contact 2026 © - all rights reserved

<https://www.phoenixcontact.com>

Phoenix Contact USA  
586 Fulling Mill Road  
Middletown, PA 17057, United States  
(+717) 944-1300  
[info@phoenixcon.com](mailto:info@phoenixcon.com)