

DT-TELE-RJ45 - Surge protection device



2882925

<https://www.phoenixcontact.com/us/products/2882925>

Please be informed that the data shown in this PDF document is generated from our online catalog. Please find the complete data in the user documentation. Our general terms of use for downloads are valid.



Attachment plug with surge protection for analog and digital telecommunications interfaces (VDSL up to 50 Mbps). Connection: RJ45 (RJ12/RJ11) and screw terminal block (COMBICON). Alternatively, can be snapped onto a DIN rail.

Your advantages

- Easy network integration via RJ45/COMBICON connection
- No signal interference with adapted protective circuit
- Can be installed in a control cabinet by removing the ground connection adapter

Commercial data

| | |
|--------------------------------------|---------------|
| Item number | 2882925 |
| Packing unit | 1 pc |
| Minimum order quantity | 1 pc |
| Sales key | CL03 |
| Product key | CL3221 |
| GTIN | 4046356155137 |
| Weight per piece (including packing) | 330 g |
| Weight per piece (excluding packing) | 314.324 g |
| Customs tariff number | 85369010 |
| Country of origin | DE |

DT-TELE-RJ45 - Surge protection device

2882925

<https://www.phoenixcontact.com/us/products/2882925>

Technical data

Product properties

| | |
|-------------------------|---|
| Product type | Surge protection for information technology |
| Product family | DATATRAB |
| IEC test classification | B2 |
| | C1 |
| | C2 |
| | C3 |
| | D1 |
| Type | Attachment plug for DIN rail mounting |
| Number of positions | 4 |
| Wire pairs per module | 2 |

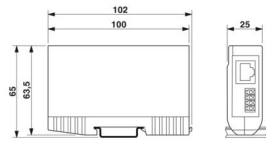
Insulation characteristics

| | |
|----------------------|----|
| Overvoltage category | II |
| Pollution degree | 2 |

Connection data

| | |
|----------------------------------|--|
| Connection method | RJ45 / COMBICON |
| Screw thread | M2 |
| Tightening torque | 0.22 Nm |
| Conductor cross-section flexible | 0.14 mm ² ... 1.5 mm ² |
| Conductor cross-section rigid | 0.14 mm ² ... 1.5 mm ² |
| Conductor cross-section AWG | 28 ... 16 |

Dimensions

| | |
|---------------------|--|
| Dimensional drawing |  |
| Width | 25 mm |
| Height | 102 mm |
| Depth | 63.5 mm |

Material specifications

| | |
|------------------|------------------|
| Color | silver-colored |
| | black (RAL 9005) |
| Housing material | Die-cast zinc |

Mechanical properties

DT-TELE-RJ45 - Surge protection device



2882925

<https://www.phoenixcontact.com/us/products/2882925>

Mechanical data

| | |
|-----------------|----|
| Open side panel | No |
|-----------------|----|

Protective circuit

| | |
|--|---|
| Direction of action | Line-Line & Line-Ground/Shield |
| Maximum continuous operating voltage U_C | 185 V DC |
| | 130 V AC |
| Rated current | ≤ 380 mA (25 °C) |
| Operating effective current I_C at U_C | ≤ 6 μ A |
| Protective conductor current I_{PE} | ≤ 4 μ A |
| Nominal discharge current I_n (8/20) μ s (line-line) | ≤ 5 kA |
| Nominal discharge current I_n (8/20) μ s (line-ground) | ≤ 5 kA |
| Total discharge current I_{Total} (8/20) μ s | 10 kA |
| Nominal pulse current I_{an} (10/1000) μ s (line-line) | 100 A |
| Nominal pulse current I_{an} (10/1000) μ s (line-earth) | 100 A |
| Nominal pulse current I_{an} (10/700) μ s (line-line) | 150 A |
| Nominal pulse current I_{an} (10/700) μ s (line-earth) | 150 A |
| Output voltage limitation at 1 kV/ μ s (line-line) static | ≤ 250 V |
| Output voltage limitation at 1 kV/ μ s (line-earth) static | ≤ 250 V |
| Residual voltage at I_n (conductor-conductor) | ≤ 120 V |
| Residual voltage at I_n (conductor-ground) | ≤ 120 V |
| Voltage protection level U_p (line-line) | ≤ 250 V (B2 - 4 kV / 100 A) |
| | ≤ 250 V (C1 - 1 kV / 500 A) |
| | ≤ 250 V (C2 - 10 kV / 5 kA) |
| Voltage protection level U_p (line-earth) | ≤ 250 V (B2 - 4 kV / 100 A) |
| | ≤ 250 V (C1 - 1 kV / 500 A) |
| | ≤ 250 V (C2 - 10 kV / 5 kA) |
| Response time t_A (line-line) | ≤ 100 ns |
| Response time t_A (line-earth) | ≤ 100 ns |
| Input attenuation aE, sym. | typ. 0.5 dB (≤ 5 MHz / 100 Ω) |
| | typ. 0.3 dB (≤ 8 MHz/150 Ω) |
| | typ. 0.3 dB (≤ 2.5 MHz / 600 Ω) |
| Cut-off frequency f_g (3 dB), sym. in 100 Ω system | typ. 50 MHz |
| Capacity (Core-Core) | typ. 20 pF (f= 1 MHz / VR= 0 V) |
| Capacity (Core-Earth) | typ. 20 pF (f= 1 MHz / VR= 0 V) |
| Resistance per path | 3.3 Ω 10 % |
| Surge protection fault message | none |
| Impulse durability (line-line) | B2 - 4 kV / 100 A |
| | C1 - 1 kV / 500 A |
| | C2 - 10 kV / 5 kA |
| Impulse durability (line-earth) | B2 - 4 kV / 100 A |
| | C1 - 1 kV / 500 A |
| | C2 - 10 kV / 5 kA |

DT-TELE-RJ45 - Surge protection device



2882925

<https://www.phoenixcontact.com/us/products/2882925>

| | |
|--|-----------|
| | D1 - 1 kA |
|--|-----------|

Environmental and real-life conditions

Ambient conditions

| | |
|---|------------------|
| Degree of protection | IP20 |
| Ambient temperature (operation) | -40 °C ... 85 °C |
| Ambient temperature (storage/transport) | -40 °C ... 85 °C |

Standards and regulations

| | |
|--------------------------|--------------|
| Standards/specifications | IEC 61643-21 |
| Note | 2012 |
| Standards/specifications | EN 61643-21 |
| Note | 2013 |

Mounting

| | |
|---------------|---|
| Mounting type | Connection-specific attachment plug and DIN rail, 35 mm |
|---------------|---|

DT-TELE-RJ45 - Surge protection device

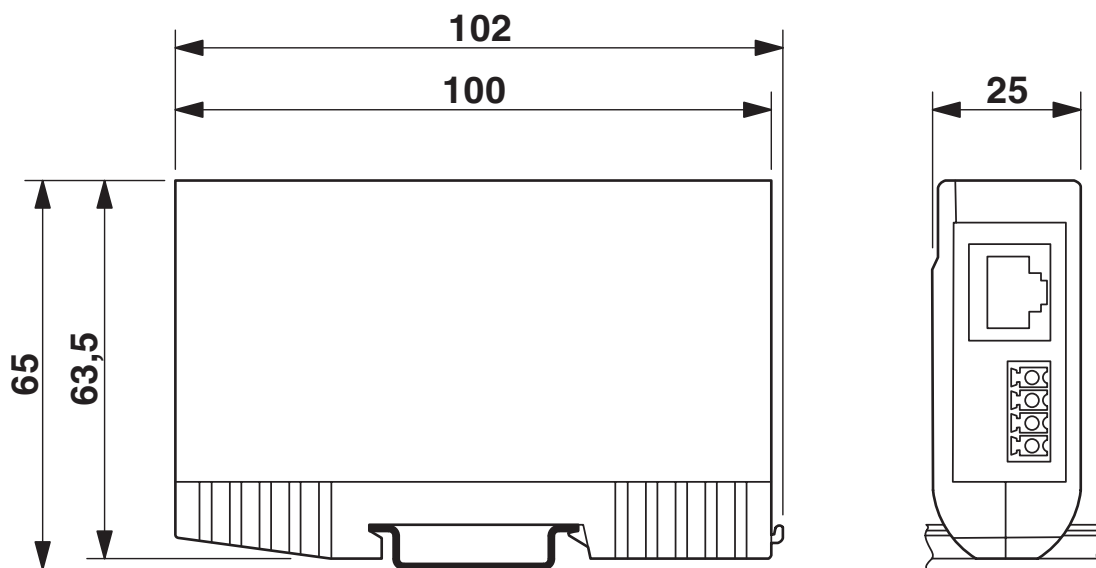


2882925

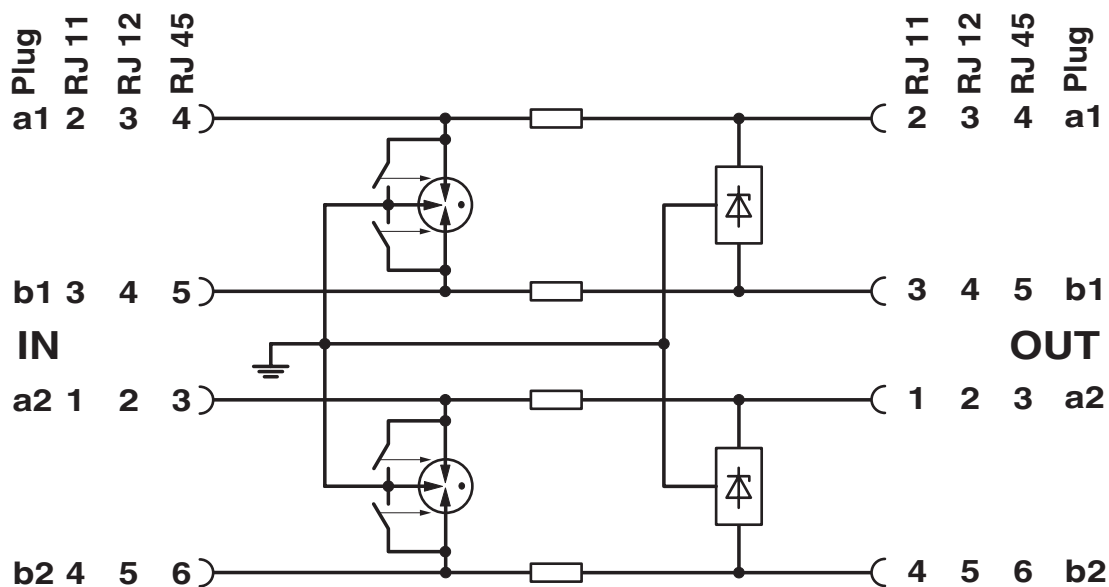
<https://www.phoenixcontact.com/us/products/2882925>

Drawings

Dimensional drawing



Circuit diagram



DT-TELE-RJ45 - Surge protection device



2882925

<https://www.phoenixcontact.com/us/products/2882925>

Classifications

ECLASS

| | |
|-------------|----------|
| ECLASS-13.0 | 27171503 |
| ECLASS-15.0 | 27171503 |

ETIM

| | |
|-----------|----------|
| ETIM 10.0 | EC001625 |
|-----------|----------|

UNSPSC

| | |
|-------------|----------|
| UNSPSC 21.0 | 39121600 |
|-------------|----------|

DT-TELE-RJ45 - Surge protection device



2882925

<https://www.phoenixcontact.com/us/products/2882925>

Environmental product compliance

EU RoHS

| | |
|---|----------------------|
| Fulfills EU RoHS substance requirements | Yes |
| Exemption | 6(a)-I, 7(a), 7(c)-I |

China RoHS

| | |
|--|---|
| Environment friendly use period (EFUP) | EFUP-50 |
| | An article-related China RoHS declaration table can be found in the download area for the respective article under "Manufacturer declaration". For all articles with EFUP-E, no China RoHS declaration table issued and required. |

EU REACH SVHC

| | |
|-------------------------------------|--------------------------------------|
| REACH candidate substance (CAS No.) | Lead(CAS: 7439-92-1) |
| SCIP | 385eeb3d-939f-419a-a4d2-a539f7ea43e9 |

Phoenix Contact 2026 © - all rights reserved

<https://www.phoenixcontact.com>

Phoenix Contact USA
586 Fulling Mill Road
Middletown, PA 17057, United States
(+717) 944-1300
info@phoenixcon.com