

C-SAT-BOX - Surge protection device

2880561

<https://www.phoenixcontact.com/us/products/2880561>

Please be informed that the data shown in this PDF document is generated from our online catalog. Please find the complete data in the user documentation. Our general terms of use for downloads are valid.



Surge protection for antenna distributors in satellite systems. IN and OUT via F connectors, 5 channels for signals from SAT systems and terrestrial antennas, ground connection on the outside of the housing.

Your advantages

- No signal interference with optimum transmission properties
- Space-saving, thanks to the compact design
- Protection of digital and analog signals with universal protective circuit
- Easy installation with surface mounting

Commercial data

Item number	2880561
Packing unit	1 pc
Minimum order quantity	1 pc
Sales key	CL25
Product key	CL3315
GTIN	4046356048941
Weight per piece (including packing)	277.3 g
Weight per piece (excluding packing)	228.24 g
Customs tariff number	85363010
Country of origin	DE

C-SAT-BOX - Surge protection device

2880561

<https://www.phoenixcontact.com/us/products/2880561>

Technical data

Product properties

Product type	Surge protection for transceiver systems
IEC test classification	B2
	C1
	C2
	C3
	D1
Type	Housing for surface mounting
Number of positions	5

Insulation characteristics

Overvoltage category	II
Pollution degree	2

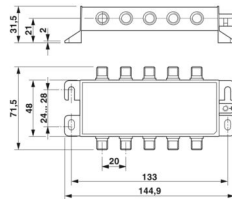
Electrical properties

Nominal voltage U_N	14 V DC (vertical)
	18 V DC (horizontal)

Connection data

Connection method	F connector
-------------------	-------------

Dimensions

Dimensional drawing	
Width	144.9 mm
Height	31.5 mm
Depth	71.5 mm

Material specifications

Color	silver-colored
Housing material	Die-cast zinc
Housing surface material	Ni
Inner conductor surface material	Sn
Insulation body material	PP
Spring contact material	CuSn

Protective circuit

C-SAT-BOX - Surge protection device



2880561

<https://www.phoenixcontact.com/us/products/2880561>

Direction of action	Line-Shield/Earth Ground
Nominal voltage U_N	14 V DC (vertical)
	18 V DC (horizontal)
Maximum continuous operating voltage U_C	20 V DC
Rated current	400 mA
Operating effective current I_C at U_C	$\leq 2 \mu\text{A}$ (per channel)
Protective conductor current I_{PE}	$\leq 2 \mu\text{A}$ (per channel)
Nominal discharge current I_n (8/20) μs (line-shield)	2.5 kA
Pulse discharge current I_{imp} (10/350) μs	0.5 kA
Total discharge current I_{Total} (8/20) μs	10 kA
Max. discharge current I_{max} (8/20) μs maximum (line-shield)	2.5 kA
Nominal pulse current I_{an} (10/1000) μs (line-shield)	100 A
Nominal pulse current I_{an} (10/700) μs (line-shield)	100 A
Output voltage limitation at 1 kV/ μs (line-shield) static	$\leq 80 \text{ V}$
Voltage protection level U_p (line-shield)	$\leq 500 \text{ V}$ (C2 - 4 kV / 2 kA)
	$\leq 120 \text{ V}$ (C3 - 100 A)
Response time t_A (line-shield)	$\leq 1 \text{ ns}$
Input attenuation a_E , asym.	$\leq 1 \text{ dB}$ (5 MHz ... 2.2 GHz / 75 Ω)
	$\leq 3 \text{ dB}$ (5 MHz ... 2,4 GHz / 75 Ω)
Near-end crosstalk attenuation	$\geq 40 \text{ dB}$ (5 MHz ... 2,4 GHz / 75 Ω)
Cut-off frequency f_g (3 dB), asym. (shield) in 75 Ω system	$> 2.5 \text{ GHz}$
Frequency range	47 MHz ... 2.5 GHz
Inductivity in series	typ. 5 μH (f = 10 kHz)
Resistance per path	3.3 $\Omega \pm 20 \%$
Surge protection fault message	none
Impulse durability (line-shield)	B2 - 4 kV / 100 A
	C1 - 1 kV / 500 A
	C2 - 4 kV/2 kA
	C3 - 100 A
	D1 - 500 A
Impulse durability (shield-ground)	C2 - 10 kA
	D1 - 5 kA

Environmental and real-life conditions

Ambient conditions

Degree of protection	IP40
Ambient temperature (operation)	-25 °C ... 55 °C
Ambient temperature (storage/transport)	-40 °C ... 80 °C
Altitude	$\leq 4000 \text{ m}$ (amsl)

Standards and regulations

Standards/specifications	IEC 61643-21
Note	2000 + A1:2008 + A2:2012
Standards/specifications	EN 61643-21

C-SAT-BOX - Surge protection device



2880561

<https://www.phoenixcontact.com/us/products/2880561>

Note	2013
Standards/specifications	EN 50083-2
Note	CLASS-A

Mounting

Mounting type	Screw mounting
---------------	----------------

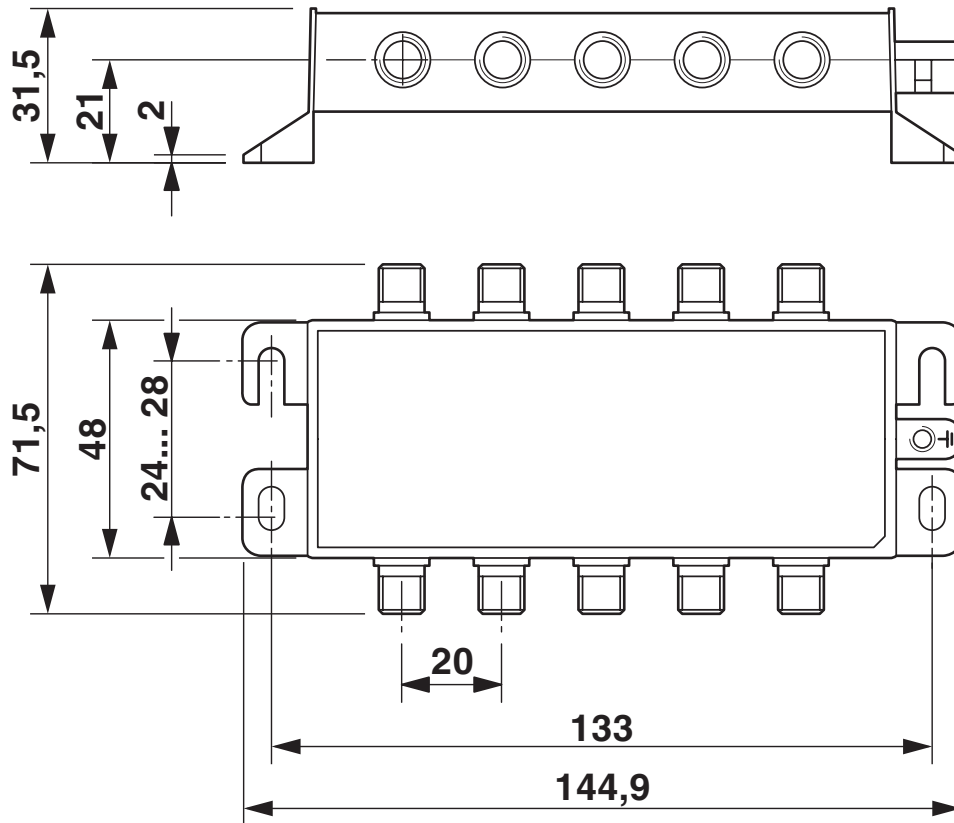
C-SAT-BOX - Surge protection device

2880561

<https://www.phoenixcontact.com/us/products/2880561>

Drawings

Dimensional drawing

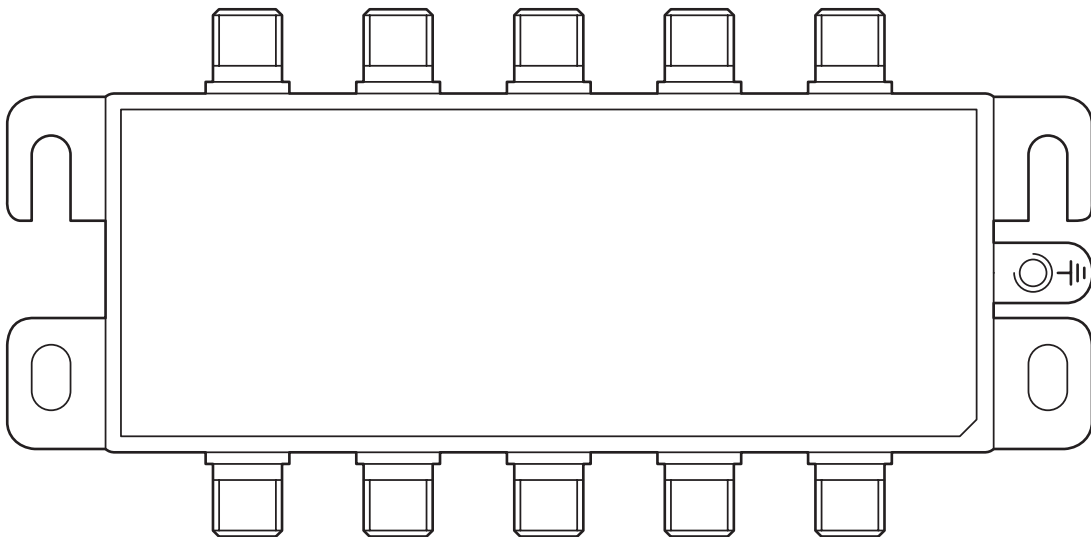
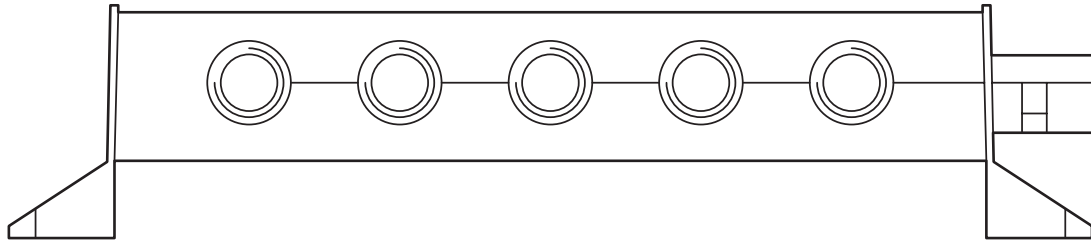


C-SAT-BOX - Surge protection device

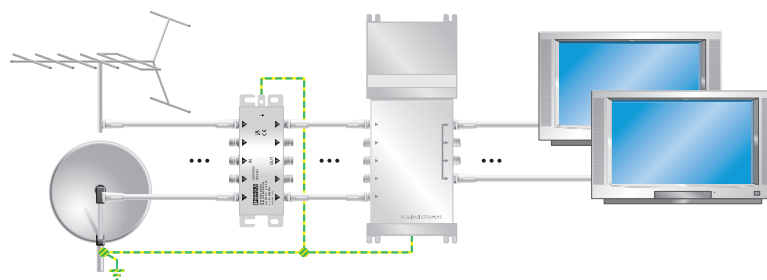
2880561

<https://www.phoenixcontact.com/us/products/2880561>

Product drawing



Application drawing



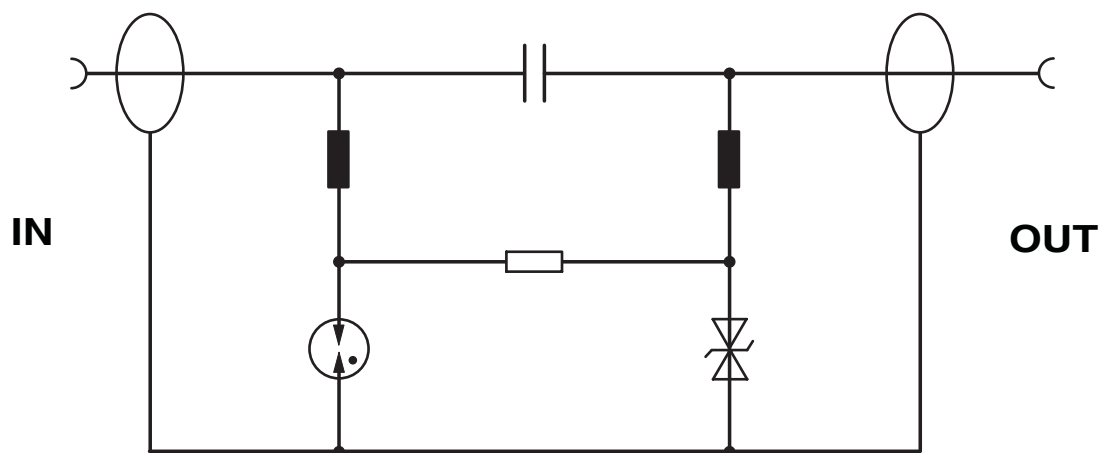
C-SAT-BOX - Surge protection device



2880561

<https://www.phoenixcontact.com/us/products/2880561>

Circuit diagram



C-SAT-BOX - Surge protection device



2880561

<https://www.phoenixcontact.com/us/products/2880561>

Classifications

ECLASS

ECLASS-13.0	27171504
ECLASS-15.0	27171504

ETIM

ETIM 10.0	EC001625
-----------	----------

UNSPSC

UNSPSC 21.0	39121600
-------------	----------

C-SAT-BOX - Surge protection device



2880561

<https://www.phoenixcontact.com/us/products/2880561>

Environmental product compliance

EU RoHS

Fulfills EU RoHS substance requirements	Yes
Exemption	7(a), 7(c)-I

China RoHS

Environment friendly use period (EFUP)	EFUP-50
	An article-related China RoHS declaration table can be found in the download area for the respective article under "Manufacturer declaration". For all articles with EFUP-E, no China RoHS declaration table issued and required.

EU REACH SVHC

REACH candidate substance (CAS No.)	Lead(CAS: 7439-92-1)
SCIP	8c5983bc-fcc9-4ccc-a93d-78435e28f3a9

Phoenix Contact 2026 © - all rights reserved

<https://www.phoenixcontact.com>

Phoenix Contact USA
586 Fulling Mill Road
Middletown, PA 17057, United States
(+717) 944-1300
info@phoenixcon.com