

EG 67,5-A/PC GN SO67 - Upper housing part

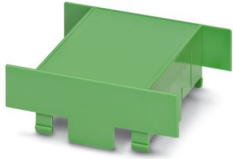


2853226

<https://www.phoenixcontact.com/us/products/2853226>

Please be informed that the data shown in this PDF document is generated from our online catalog. Please find the complete data in the user documentation. Our general terms of use for downloads are valid.

Component housing, Upper part, width: 67.5 mm, color: green (similar RAL 6021)



The figure shows a version of the product

Commercial data

Item number	2853226
Packing unit	10 pc
Minimum order quantity	10 pc
Product key	ACHCGA
GTIN	4017918426330
Weight per piece (including packing)	14.7 g
Weight per piece (excluding packing)	14.1 g
Country of origin	DE

EG 67,5-A/PC GN SO67 - Upper housing part



2853226

<https://www.phoenixcontact.com/us/products/2853226>

Technical data

Product properties

Product type	Upper housing part
Housing type	Component housing
Housing series	EG
Product family	EG...A
Number (Connection openings)	2

Dimensions

Width	67.5 mm
-------	---------

Material specifications

Color (Upper housing part)	green (RAL 6021)
Material Housing	PC

EG 67,5-A/PC GN SO67 - Upper housing part



2853226

<https://www.phoenixcontact.com/us/products/2853226>

Approvals

To download certificates, visit the product detail page: <https://www.phoenixcontact.com/us/products/2853226>



UL Recognized

Approval ID: E240868

EG 67,5-A/PC GN SO67 - Upper housing part



2853226

<https://www.phoenixcontact.com/us/products/2853226>

Classifications

ECLASS

ECLASS-13.0	27190603
ECLASS-15.0	27190603

ETIM

ETIM 10.0	EC002779
-----------	----------

UNSPSC

UNSPSC 21.0	31261500
-------------	----------

EG 67,5-A/PC GN SO67 - Upper housing part



2853226

<https://www.phoenixcontact.com/us/products/2853226>

Environmental product compliance

EU RoHS

Fulfills EU RoHS substance requirements	Yes, No exemptions
---	--------------------

China RoHS

Environment friendly use period (EFUP)	EFUP-E
	No hazardous substances above the limits

EU REACH SVHC

REACH candidate substance (CAS No.)	No substance above 0.1 wt%
-------------------------------------	----------------------------

EF3.1 Climate Change

CO2e kg	0.115 kg CO2e
---------	---------------

Phoenix Contact 2026 © - all rights reserved
<https://www.phoenixcontact.com>

Phoenix Contact USA
586 Fulling Mill Road
Middletown, PA 17057, United States
(+717) 944-1300
info@phoenixcon.com