

UEG 20 GY - Electronics housing

2790936

<https://www.phoenixcontact.com/us/products/2790936>

Please be informed that the data shown in this PDF document is generated from our online catalog. Please find the complete data in the user documentation. Our general terms of use for downloads are valid.



The figure shows a green version

Electronic housing, for PCB insertion, fully equipped with 4 screw or tab connections per side

Commercial data

| | |
|--------------------------------------|--------------------------------|
| Item number | 2790936 |
| Packing unit | 10 pc |
| Minimum order quantity | 10 pc |
| Note | Made to order (non-returnable) |
| Product key | ACHCCA |
| GTIN | 4017918274412 |
| Weight per piece (including packing) | 46.46 g |
| Weight per piece (excluding packing) | 38.768 g |
| Country of origin | DE |

Technical data

Product properties

| | |
|---------------------|--|
| Housing type | Complete housing |
| Type | Connection system integrated, housing closed |
| Number of positions | 8 |
| Pitch | 5 mm |
| Number of rows | 2 |
| Pin layout | Linear pinning |

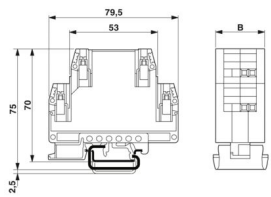
Electrical properties

| | |
|-----------------------|--|
| Nominal voltage U_N | 500 V (Voltage and current values are affected by the configuration of the printed circuit board.) |
| Nominal current I_N | 10 A |

Connection data

| | |
|-------------------|------------------|
| Connection method | Screw connection |
|-------------------|------------------|

Dimensions

| | |
|---------------------|--|
| Dimensional drawing |  |
| Width | 20 mm |
| Height NS 35/7,5 | 70 mm |
| Depth | 79.5 mm |
| Length | 79.5 mm |
| Pitch | 5 mm |

Material specifications

| | |
|--|--------|
| Color | gray |
| Flammability rating according to UL 94 | V2 |
| Housing material | PA 6.6 |

Environmental and real-life conditions

Ambient conditions

| | |
|---------------------------------|-------------------|
| Ambient temperature (operation) | -40 °C ... 105 °C |
|---------------------------------|-------------------|

Mounting

| | |
|---------------|----------------|
| Mounting type | Soldering |
| Pin layout | Linear pinning |

UEG 20 GY - Electronics housing

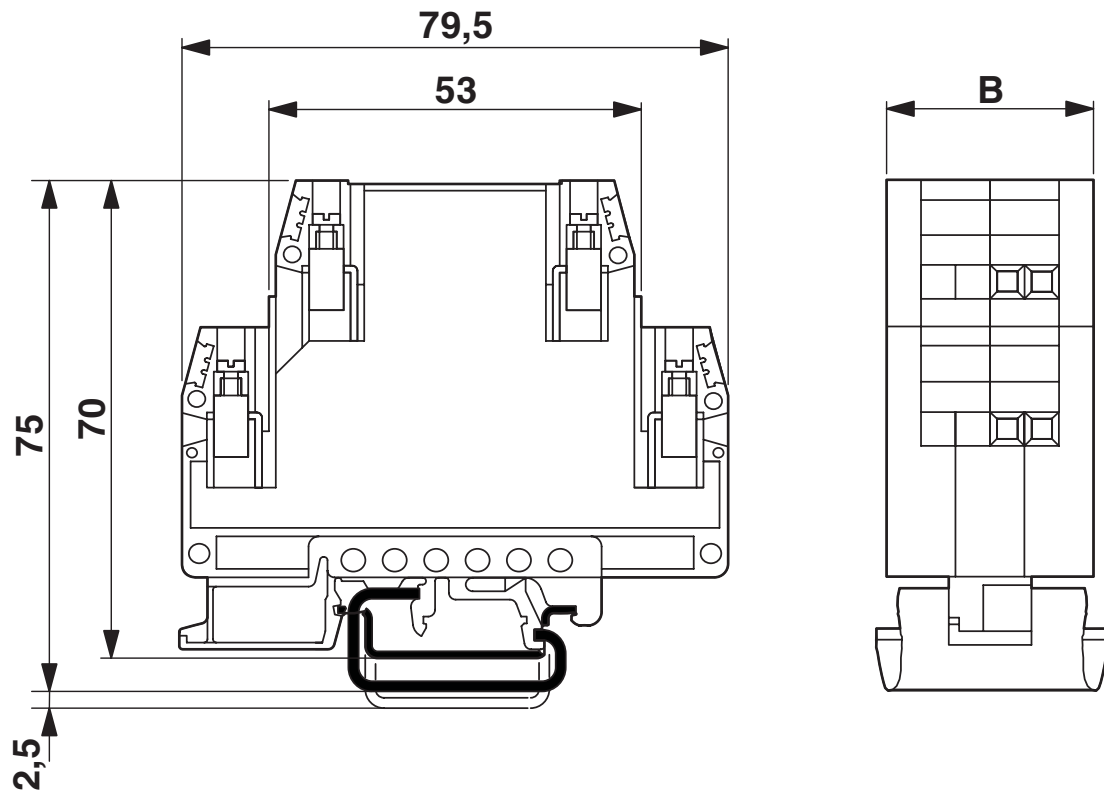
2790936

<https://www.phoenixcontact.com/us/products/2790936>



Drawings

Dimensional drawing



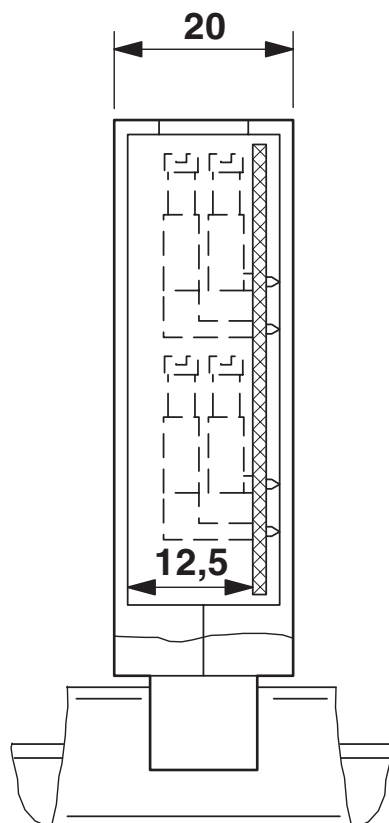
UEG 20 GY - Electronics housing

2790936

<https://www.phoenixcontact.com/us/products/2790936>



Dimensional drawing



UEG 20 with 1 PCB, up to max. 8 pos.

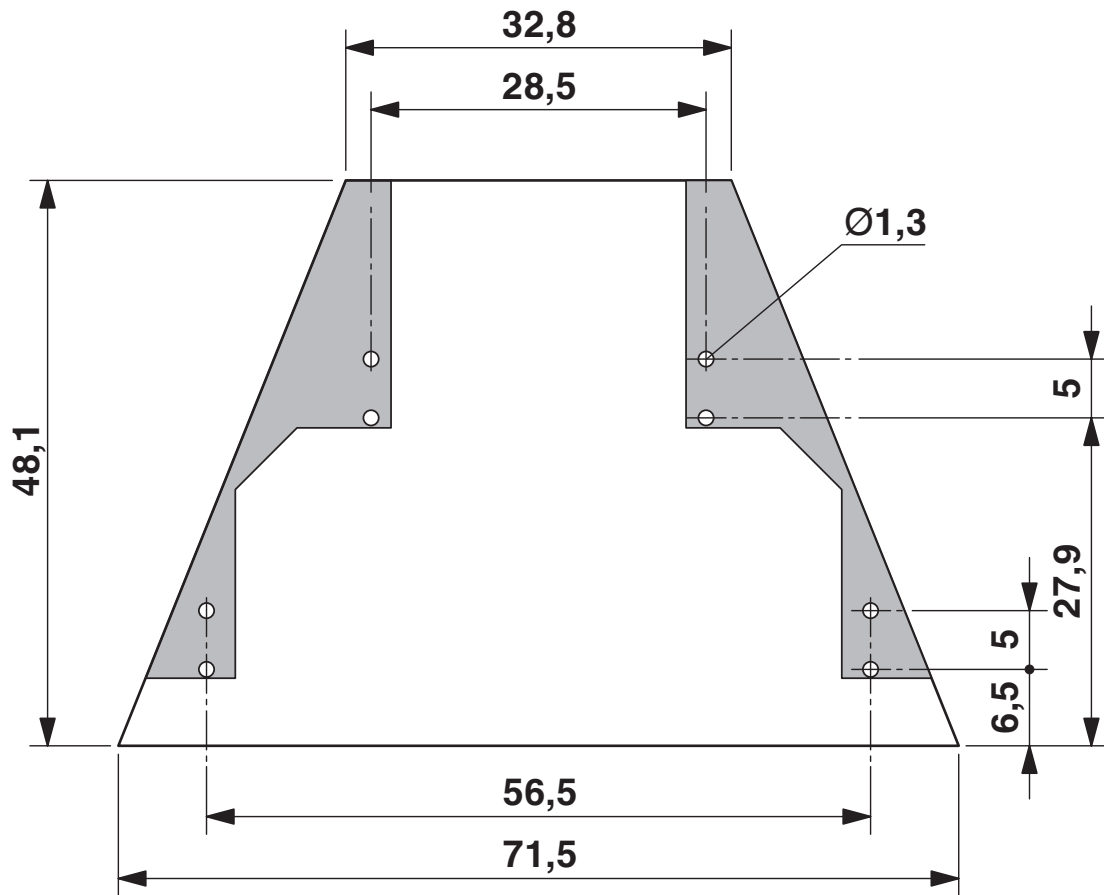
UEG 20 GY - Electronics housing

2790936

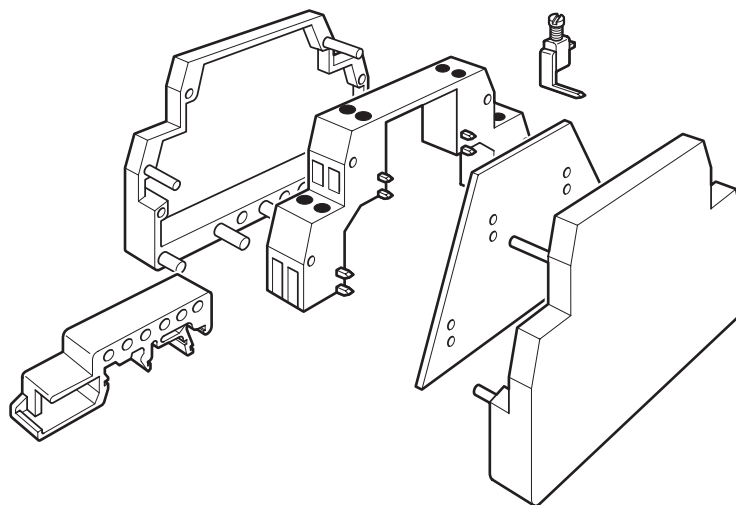
<https://www.phoenixcontact.com/us/products/2790936>



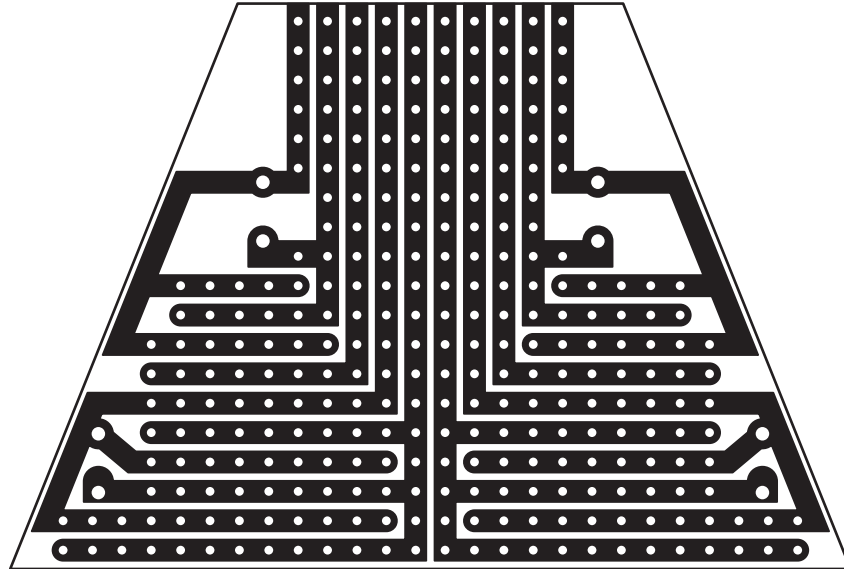
Dimensional drawing



Exploded view



Schematic diagram



UEG 20 GY - Electronics housing



2790936

<https://www.phoenixcontact.com/us/products/2790936>

Environmental product compliance

China RoHS

| | |
|--|---|
| Environment friendly use period (EFUP) | EFUP-50 |
| | An article-related China RoHS declaration table can be found in the download area for the respective article under "Manufacturer declaration". For all articles with EFUP-E, no China RoHS declaration table issued and required. |

EU REACH SVHC

| | |
|-------------------------------------|----------------------------|
| REACH candidate substance (CAS No.) | No substance above 0.1 wt% |
|-------------------------------------|----------------------------|

Phoenix Contact 2026 © - all rights reserved
<https://www.phoenixcontact.com>

Phoenix Contact USA
586 Fulling Mill Road
Middletown, PA 17057, United States
(+717) 944-1300
info@phoenixcon.com