

FLM BK EIP M12 DI 8 M12-2TX - Bus coupler



2773322

<https://www.phoenixcontact.com/us/products/2773322>

Please be informed that the data shown in this PDF document is generated from our online catalog. Please find the complete data in the user documentation. Our general terms of use for downloads are valid.



The EtherNet/IP™ bus coupler opens a local bus for up to 16 devices. Additional functions: 10 Mbps and 100 Mbps, auto negotiation, auto crossover, 8 digital inputs, channel-specific diagnostics, short-circuit/overload protection, M12 fast connection technology.

Your advantages

- EtherNet/IP™
- 8 inputs, 24 V DC
- M12 connection technology with SPEEDCON fast locking system

Commercial data

Item number	2773322
Packing unit	1 pc
Minimum order quantity	1 pc
Sales key	DR03
Product key	DRI41D
GTIN	4046356166096
Weight per piece (including packing)	343.4 g
Weight per piece (excluding packing)	280 g
Customs tariff number	85176200
Country of origin	DE

FLM BK EIP M12 DI 8 M12-2TX - Bus coupler

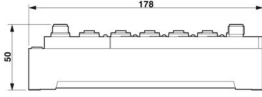


2773322

<https://www.phoenixcontact.com/us/products/2773322>

Technical data

Dimensions

Dimensional drawing	
Width	70 mm
Height	178 mm
Depth	50 mm
Drill hole spacing	178 mm

Material specifications

Color	anthracite
-------	------------

Interfaces

EtherNet/IP™

Connection method	M12 connector, D-coded
Designation connection point	Copper cable
Number of positions	4
Transmission speed	10/100 Mbps (auto negotiation)

Fieldbus: Local bus gateway

Designation	Local bus gateway
Connection method	M12 connector, B-coded
Transmission speed	500 kbaud/2 Mbaud, can be selected
Max. length of local bus	20 m
Max. number of local bus devices	16

System properties

System limits

Number of local bus devices that can be connected	max. 16
Number of devices with parameter channel	max. 16

Module

Process data channel	8 bit
Input address area	8 bit
Output address area	0 bit
Register length	8 bit

Input data

FLM BK EIP M12 DI 8 M12-2TX - Bus coupler



2773322

<https://www.phoenixcontact.com/us/products/2773322>

Digital:

Input name	Digital inputs
Description of the input	IEC 61131-2 type 1
Number of inputs	8
Connection method	M12 connector
Connection technology	2-, 3-, 4-conductor
Input voltage	24 V DC
Input voltage range "0" signal	-30 V DC ... 5 V DC
Input voltage range "1" signal	13 V DC ... 30 V DC
Nominal input voltage U_{IN}	24 V DC
Filter time	3 ms
Protective circuit	Short-circuit protection, overload protection of the sensor supply; Reverse polarity protection

Product properties

Product type	I/O component
Product family	Fieldline
Type	modular
No. of channels	8

Electrical properties

Potentials

Voltage supply U_L	24 V DC
Power supply at U_L	max. 4 A
Current consumption from U_L	max. 118 mA (At 2 Mbaud)
	typ. 118 mA (At 2 Mbaud)
	max. 60 mA (At 500 kBaud)
	typ. 60 mA (At 500 kBaud)
Voltage supply U_S	24 V DC
Power supply at U_S	max. 4 A
Current consumption from U_S	typ. 5 mA (plus power supply for sensors)
	max. 600 mA

Supply: Module electronics

Connection method	M12 connector
Designation	U_L
Supply voltage	24 V DC
Supply voltage range	18 V DC ... 30 V DC (including ripple)
Supply current	< 100 mA

Electrical isolation/isolation of the voltage ranges

Test voltage: To I/O	500 V DC
----------------------	----------

Connection data

FLM BK EIP M12 DI 8 M12-2TX - Bus coupler



2773322

<https://www.phoenixcontact.com/us/products/2773322>

Connection method	M12 connector
-------------------	---------------

Environmental and real-life conditions

Ambient conditions

Ambient temperature (operation)	-25 °C ... 60 °C
Degree of protection	IP65/IP67
Air pressure (operation)	80 kPa ... 106 kPa (up to 2000 m above sea level)
Air pressure (storage/transport)	70 kPa ... 106 kPa (up to 3000 m above sea level)
Ambient temperature (storage/transport)	-25 °C ... 85 °C
Permissible humidity (storage/transport)	95 %

Standards and regulations

Protection class	III (IEC 61140, EN 61140, VDE 0140-1)
------------------	---------------------------------------

Mounting

Mounting type	Panel mounting, optionally on mounting panel
	Panel mounting

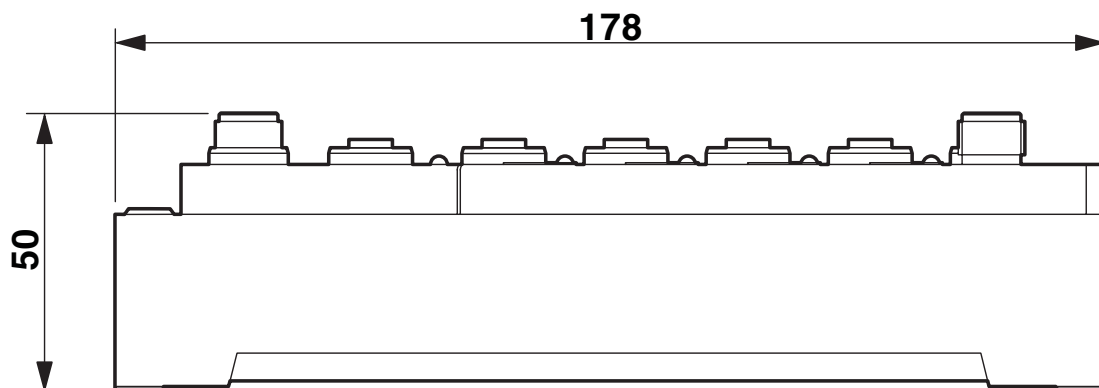
FLM BK EIP M12 DI 8 M12-2TX - Bus coupler

2773322

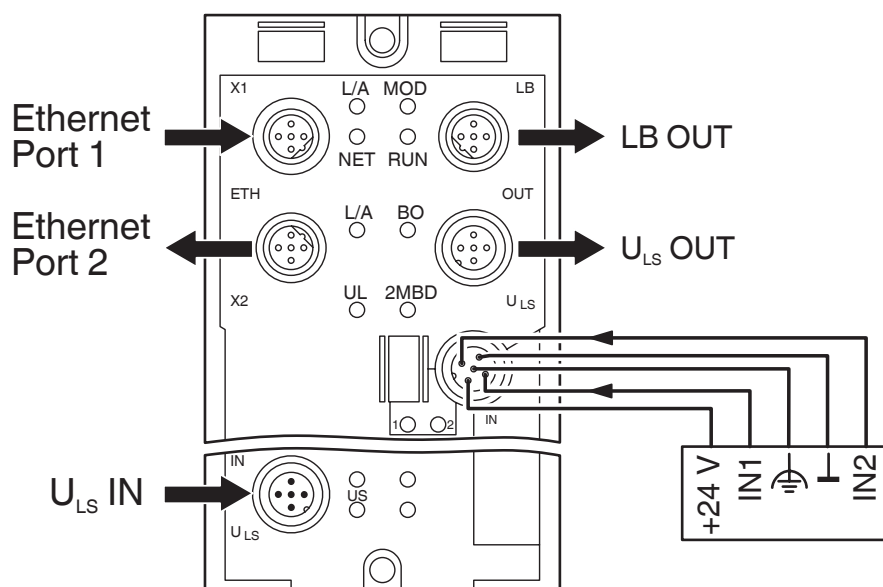
<https://www.phoenixcontact.com/us/products/2773322>

Drawings

Dimensional drawing



Connection diagram



FLM BK EIP M12 DI 8 M12-2TX - Bus coupler



2773322

<https://www.phoenixcontact.com/us/products/2773322>

Classifications

ECLASS

ECLASS-13.0	27242604
ECLASS-15.0	27242604

ETIM

ETIM 9.0	EC001599
----------	----------

UNSPSC

UNSPSC 21.0	32151600
-------------	----------

FLM BK EIP M12 DI 8 M12-2TX - Bus coupler



2773322

<https://www.phoenixcontact.com/us/products/2773322>

Environmental product compliance

EU RoHS

Fulfills EU RoHS substance requirements	Yes
Exemption	6(c), 7(a), 7(c)-I

China RoHS

Environment friendly use period (EFUP)	EFUP-E
	No hazardous substances above the limits

EU REACH SVHC

REACH candidate substance (CAS No.)	Lead(CAS: 7439-92-1)
-------------------------------------	----------------------

Phoenix Contact 2026 © - all rights reserved

<https://www.phoenixcontact.com>

Phoenix Contact USA
586 Fulling Mill Road
Middletown, PA 17057, United States
(+717) 944-1300
info@phoenixcon.com