

IB ST 24 PT100 4/4 - I/O module



2752767

<https://www.phoenixcontact.com/us/products/2752767>

Please be informed that the data shown in this PDF document is generated from our online catalog. Please find the complete data in the user documentation. Our general terms of use for downloads are valid.



INTERBUS-ST analog input module, 4 inputs, RTD, 2-, 3-, and 4-conductor connection, IP20 degree of protection, consisting of: terminal part with screw connection and module electronics

Product description

INTERBUS ST analog input modules for temperature and resistance measurement

These analog input modules are suitable for recording temperature signals.

Commercially available temperature measuring resistors or thermocouples can be connected.

In addition to the various types of sensors, different characteristics can also be programmed. Further features are:

- A new shielding concept for sensors makes it possible to meet more severe EMC requirements. For each input, there is a separate shield connection. External circuit elements are not necessary.
- Diagnostic LEDs provide information on the operating status at any time.
- All modules can be individually labeled on the large pull-out labeling field. The insert cards can be prepared by hand, or by plotter or printer.
- In the event of failure or malfunction, the electronics of the module can be easily replaced. The passive termination block remains mounted on the rail. This means that the replacement process can be carried out in a just a few seconds and without the need for tools.
- The fuses are accessible from outside, so that a fault can be cleared quickly.
- The connection to protective earth ground is made directly via the DIN rail.
- The conventional labeling materials (Zack strip ZB-6, etc.) can be used to label the termination blocks.

Your advantages

- Temperature measurement modules
- Standard signal types (voltage and current)

Commercial data

| | |
|--------------------------------------|--------------------------------|
| Item number | 2752767 |
| Packing unit | 1 pc |
| Note | Made to order (non-returnable) |
| Sales key | DR03 |
| Product key | DRI343 |
| GTIN | 4017918062736 |
| Weight per piece (including packing) | 598.8 g |
| Weight per piece (excluding packing) | 540 g |
| Customs tariff number | 85389091 |
| Country of origin | DE |

Technical data

Dimensions

| | |
|---------------------|--|
| Dimensional drawing |  |
| Width | 118 mm |
| Height | 117 mm |
| Length | 116 mm |

Notes

Utilization restriction

| | |
|----------|---|
| EMC note | EMC: class A product, see manufacturer's declaration in the download area |
|----------|---|

Interfaces

ST local bus

| | |
|---------------------|------------------------|
| Connection method | ST local bus connector |
| Transmission speed | 500 kbps |
| Transmission length | 116 mm |

Product properties

| | |
|-----------------|------------------------------------|
| Product type | I/O component |
| Product family | Smart Terminal ST |
| Type | modular INTERBUS Smart Terminal |
| No. of channels | 4 |

Electrical properties

| | |
|--------------|--|
| Test section | Bus/Inputs 500 V AC 50 Hz 1 min |
| | Supply voltage/inputs 500 V AC 50 Hz 1 min |
| | Supply voltage/Ground conductor 500 V AC 50 Hz 1 min |
| | I/O voltage/Ground conductor 500 V AC 50 Hz 1 min |

Supply

| | |
|----------------------------|--------------------------------|
| Communications power U_L | 9 V DC (from the ST local bus) |
| I/O voltage | 24 V DC |
| I/O voltage range | 18.5 V DC ... 30.2 V DC |
| Residual ripple | ± 1.2 V DC |
| Max. current consumption | 100 mA (from the ST local bus) |

IB ST 24 PT100 4/4 - I/O module



2752767

<https://www.phoenixcontact.com/us/products/2752767>

| | |
|-----------------------------|-------------------------------|
| | 85 mA (to U _S) |
| Typical current consumption | 85 mA (from the ST local bus) |
| | 50 mA (to U _S) |

Connection data

Connection technology

| | |
|-----------------|----------------|
| Connection name | Terminal block |
|-----------------|----------------|

Terminal block

| | |
|-----------------------------------|---|
| Connection method | Screw connection |
| Conductor cross-section, rigid | 0.2 mm ² ... 2.5 mm ² |
| Conductor cross-section, flexible | 0.2 mm ² ... 2.5 mm ² |
| Conductor cross-section AWG | 24 ... 12 |
| Stripping length | 8 mm |

Environmental and real-life conditions

Ambient conditions

| | |
|----------------------|------|
| Degree of protection | IP20 |
|----------------------|------|

Mounting

| | |
|---------------|-------------------|
| Mounting type | DIN rail mounting |
|---------------|-------------------|

IB ST 24 PT100 4/4 - I/O module

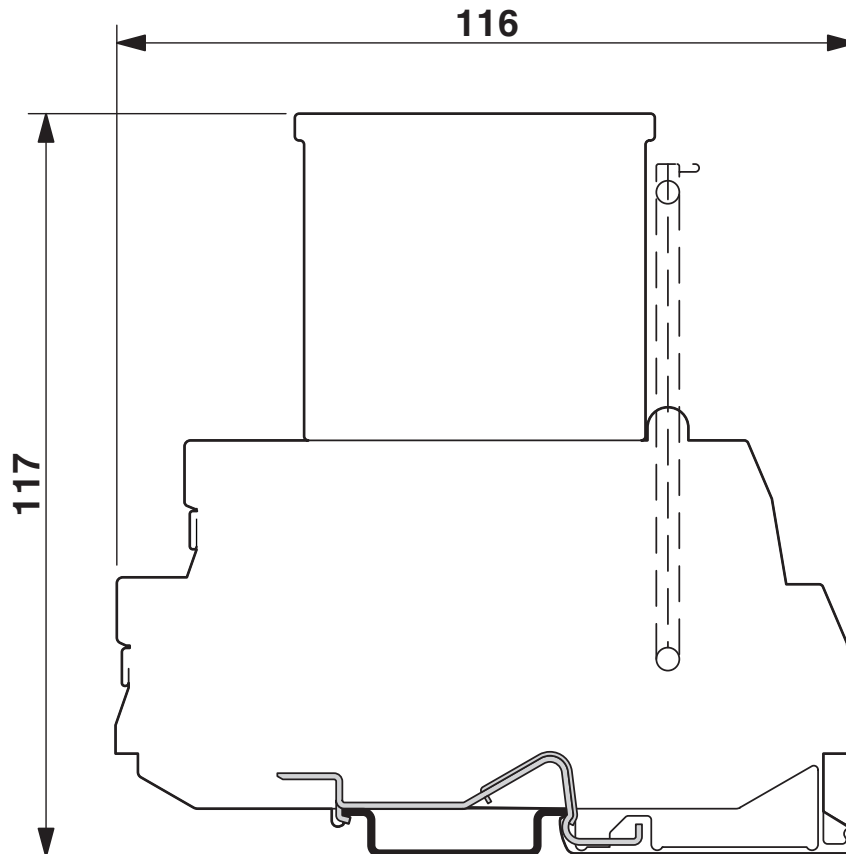


2752767

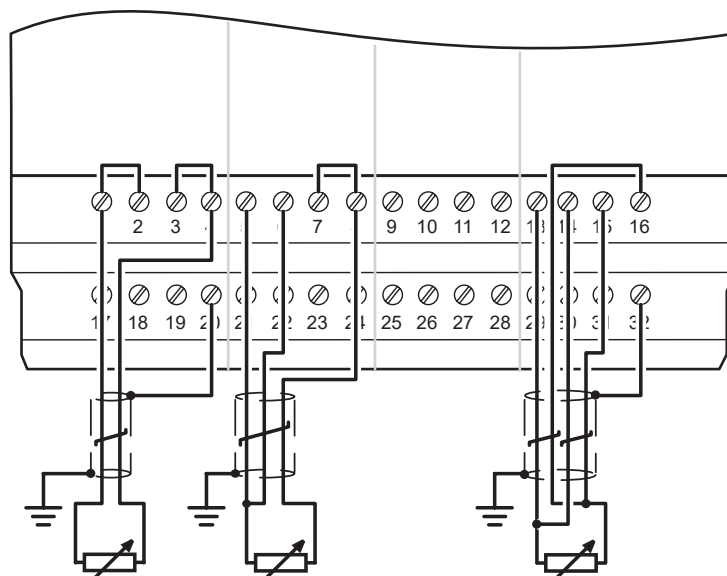
<https://www.phoenixcontact.com/us/products/2752767>

Drawings

Dimensional drawing



Connection diagram



IB ST 24 PT100 4/4 - I/O module



2752767

<https://www.phoenixcontact.com/us/products/2752767>

Environmental product compliance

China RoHS

| | |
|--|--|
| Environment friendly use period (EFUP) | EFUP-E |
| | No hazardous substances above the limits |

EU REACH SVHC

| | |
|-------------------------------------|----------------------------|
| REACH candidate substance (CAS No.) | No substance above 0.1 wt% |
|-------------------------------------|----------------------------|

Phoenix Contact 2026 © - all rights reserved
<https://www.phoenixcontact.com>

Phoenix Contact USA
586 Fulling Mill Road
Middletown, PA 17057, United States
(+717) 944-1300
info@phoenixcon.com