

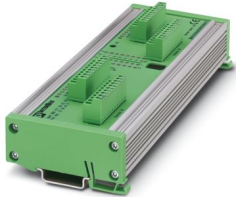
# IBS CT 24 IO GT-T/NPF - Coupling module



2740436

<https://www.phoenixcontact.com/us/products/2740436>

Please be informed that the data shown in this PDF document is generated from our online catalog. Please find the complete data in the user documentation. Our general terms of use for downloads are valid.



Coupling module (gateway), I/O coupling module for two INTERBUS systems, 24 V DC, IP20 protection, with MINI-COMBICON remote bus connection

## Your advantages

- Remote bus connections via MINI COMBICON
- Electrical isolation
- Diagnostic and status indicators
- DIN rail mounting

## Commercial data

Item number	2740436
Packing unit	1 pc
Note	Made to order (non-returnable)
Sales key	DN16
Product key	DRIA11
GTIN	4017918487591
Weight per piece (including packing)	459.6 g
Weight per piece (excluding packing)	240 g
Customs tariff number	85389091
Country of origin	DE

## Technical data

### Notes

#### Note on application

Note on application	Only for industrial use
---------------------	-------------------------

#### Utilization restriction

EMC note	EMC: class A product, see manufacturer's declaration in the download area
----------	---

### Product properties

Product type	Gateways/Proxies
Type	Block design

### Electrical properties

Test section	Supply voltage/logics	500 V AC 50 Hz 1 min
	Supply voltage/functional ground	500 V AC 50 Hz 1 min
	Logic/functional ground	500 V AC 50 Hz 1 min
	INTERBUS system 1/INTERBUS system 2	500 V AC 50 Hz 1 min
Protective circuit	Reverse polarity protection; Serial diode	
	Surge protection (35 V for 0.5 s)	
Power dissipation		5 W

#### Supply

Supply voltage (DC)	24 V DC
Supply voltage range	20 V DC ... 30 V DC
Residual ripple	3.6 V <sub>PP</sub> (within the permitted voltage range)
Typical current consumption	240 mA

### Interfaces

#### INTERBUS remote bus (incoming/outgoing)

Connection method	10-pos. MINI-COMBICON connector
Transmission speed	500 kbps

### Dimensions

Width	204 mm
Height	77 mm
Depth	37 mm

### Environmental and real-life conditions

#### Ambient conditions

Degree of protection	IP20
Ambient temperature (operation)	-20 °C ... 70 °C

# IBS CT 24 IO GT-T/NPF - Coupling module



2740436

<https://www.phoenixcontact.com/us/products/2740436>

## Mounting

Mounting type	DIN rail mounting
---------------	-------------------

# IBS CT 24 IO GT-T/NPF - Coupling module



2740436

<https://www.phoenixcontact.com/us/products/2740436>

## Classifications

### ECLASS

ECLASS-13.0	19170405
ECLASS-15.0	19170405

### ETIM

ETIM 9.0	EC001478
----------	----------

### UNSPSC

UNSPSC 21.0	43222609
-------------	----------

# IBS CT 24 IO GT-T/NPF - Coupling module



2740436

<https://www.phoenixcontact.com/us/products/2740436>

## Environmental product compliance

### EU RoHS

Fulfills EU RoHS substance requirements	Yes, No exemptions
---	--------------------

### China RoHS

Environment friendly use period (EFUP)	EFUP-E
	No hazardous substances above the limits

### EU REACH SVHC

REACH candidate substance (CAS No.)	No substance above 0.1 wt%
-------------------------------------	----------------------------

Phoenix Contact 2026 © - all rights reserved  
<https://www.phoenixcontact.com>

Phoenix Contact USA  
586 Fulling Mill Road  
Middletown, PA 17057, United States  
(+717) 944-1300  
[info@phoenixcon.com](mailto:info@phoenixcon.com)