

# FLM BK IB M12 DI 8 M12 - Bus coupler



2736301

<https://www.phoenixcontact.com/us/products/2736301>

Please be informed that the data shown in this PDF document is generated from our online catalog. Please find the complete data in the user documentation. Our general terms of use for downloads are valid.



The INTERBUS bus coupler opens a local bus for up to 16 devices. Additional functions: easy plug and play installation, 8 digital inputs, channel-specific diagnostics, short-circuit and overload protection, M12 fast connection technology.

## Product description

Fieldline modular bus coupler for INTERBUS with eight digital inputs

## Your advantages

- INTERBUS
- 8 inputs, 24 V DC
- M12 connection technology with SPEEDCON fast locking system

## Commercial data

Item number	2736301
Packing unit	1 pc
Sales key	DR03
Product key	DRI411
GTIN	4017918951061
Weight per piece (including packing)	327.4 g
Weight per piece (excluding packing)	280 g
Customs tariff number	85176200
Country of origin	DE

# FLM BK IB M12 DI 8 M12 - Bus coupler

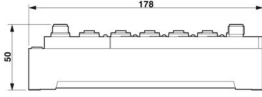


2736301

<https://www.phoenixcontact.com/us/products/2736301>

## Technical data

### Dimensions

Dimensional drawing	
Width	70 mm
Height	178 mm
Depth	50 mm
Drill hole spacing	168 mm

### Material specifications

Color	anthracite
-------	------------

### Interfaces

#### INTERBUS

Connection method	M12 connector, B-coded
Designation connection point	Copper cable
Number of positions	5
Transmission speed	500 kbps / 2 Mbps (can be switched)

#### Fieldbus: Local bus gateway

Designation	Local bus gateway
Connection method	M12 connector, B-coded
Transmission speed	500 kbaud/2 Mbaud, can be selected
Max. length of local bus	20 m
Max. number of local bus devices	16

### System properties

#### System limits

Number of local bus devices that can be connected	max. 16
Number of devices with parameter channel	max. 16

#### Module

ID code (dec.)	190
ID code (hex)	BE
Length code (hex)	81
Process data channel	8 bit
Input address area	1 Byte
Output address area	0 Byte

# FLM BK IB M12 DI 8 M12 - Bus coupler



2736301

<https://www.phoenixcontact.com/us/products/2736301>

Register length	8 bit
-----------------	-------

## Input data

### Digital:

Input name	Digital inputs
Description of the input	IEC 61131-2 type 1
Number of inputs	8 (double-occupancy)
Connection method	M12 connector
Connection technology	2-, 3-, 4-conductor
Input voltage	24 V DC
Input voltage range "0" signal	-30 V DC ... 5 V DC
Input voltage range "1" signal	13 V DC ... 30 V DC
Nominal input voltage $U_{IN}$	24 V DC
Filter time	3 ms
Protective circuit	Reverse polarity protection

## Product properties

Product type	I/O component
Product family	Fieldline
Type	modular
No. of channels	8

## Electrical properties

### Potentials

Voltage supply $U_L$	24 V DC
Power supply at $U_L$	max. 4 A
Current consumption from $U_L$	max. 100 mA (At 2 Mbaud)
	typ. 75 mA (At 2 Mbaud)
	max. 100 mA (At 500 kBaud)
	typ. 65 mA (At 500 kBaud)
Voltage supply $U_S$	24 V DC
Power supply at $U_S$	max. 4 A
Current consumption from $U_S$	typ. 5 mA (plus power supply for sensors)
	max. 600 mA

### Supply: Module electronics

Connection method	M12 connector
Designation	$U_L$
Supply voltage	24 V DC
Supply voltage range	18 V DC ... 30 V DC (including ripple)

### Electrical isolation/isolation of the voltage ranges

Test voltage: 24 V supply (bus logics) / FE	500 V AC, 50 Hz, 1 s
Test voltage: 24 V supply (bus logics) / Digital inputs (sensor)	500 V AC, 50 Hz, 1 s

# FLM BK IB M12 DI 8 M12 - Bus coupler



2736301

<https://www.phoenixcontact.com/us/products/2736301>

supply / I/O)	
Test voltage: 24 V supply (bus logics) / Digital outputs (actuator supply)	500 V AC, 50 Hz, 1 s
Test voltage: 24 V supply (bus logics) / Incoming remote bus	500 V AC, 50 Hz, 1 s
Test voltage: 24 V supply (bus logics) / Outgoing remote bus	500 V AC, 50 Hz, 1 s
Test voltage: Digital inputs (sensor supply / I/O) / FE	500 V AC, 50 Hz, 1 s
Test voltage: Digital inputs (sensor supply) / Digital outputs (actuator supply)	500 V AC, 50 Hz, 1 s
Test voltage: Digital inputs (sensor supply / I/O) / Incoming remote bus	500 V AC, 50 Hz, 1 s
Test voltage: Digital inputs (sensor supply / I/O) / Outgoing remote bus	500 V AC, 50 Hz, 1 s

## Connection data

Connection method	M12 connector
-------------------	---------------

## Environmental and real-life conditions

### Ambient conditions

Ambient temperature (operation)	-25 °C ... 60 °C
Degree of protection	IP65/IP67
Air pressure (operation)	80 kPa ... 106 kPa (up to 2000 m above sea level)
Air pressure (storage/transport)	70 kPa ... 106 kPa (up to 3000 m above sea level)
Ambient temperature (storage/transport)	-25 °C ... 85 °C
Permissible humidity (storage/transport)	95 %

## Standards and regulations

Protection class	III (IEC 61140, EN 61140, VDE 0140-1)
------------------	---------------------------------------

## Mounting

Mounting type	Panel mounting, optionally on mounting panel
	Panel mounting

# FLM BK IB M12 DI 8 M12 - Bus coupler

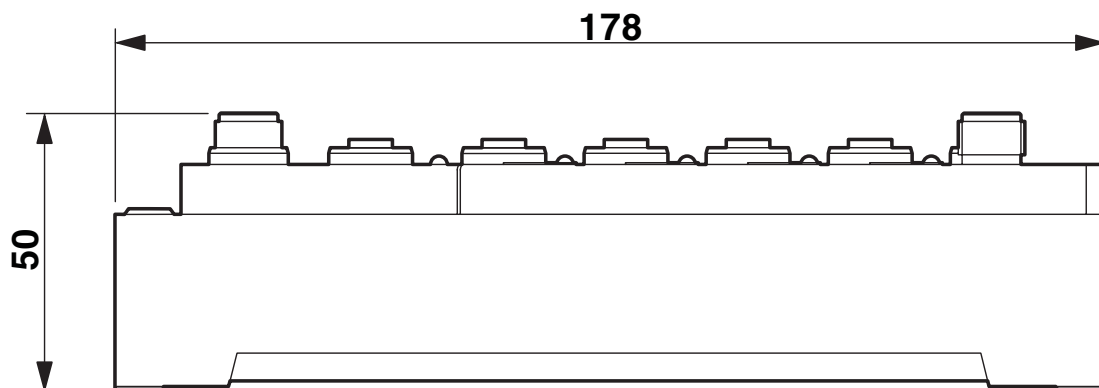


2736301

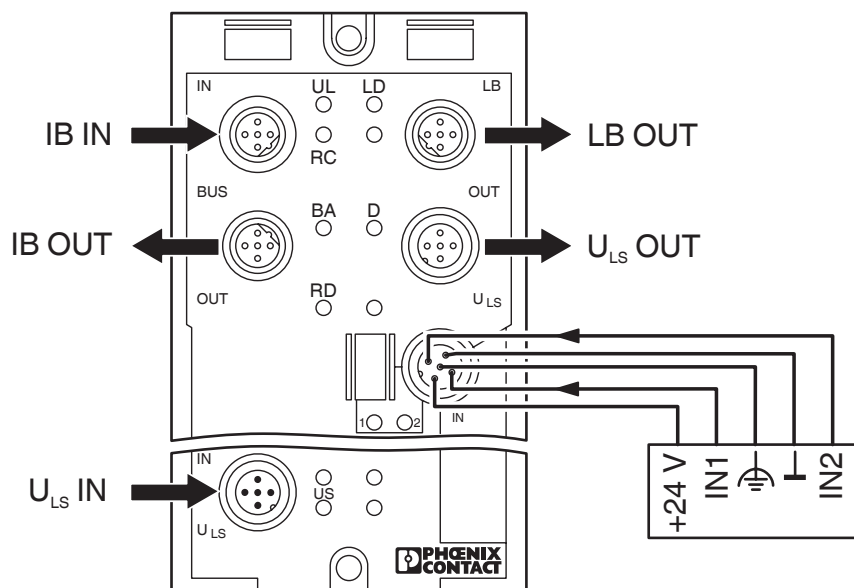
<https://www.phoenixcontact.com/us/products/2736301>

## Drawings

Dimensional drawing



Connection diagram



# FLM BK IB M12 DI 8 M12 - Bus coupler



2736301

<https://www.phoenixcontact.com/us/products/2736301>

## Classifications

### UNSPSC

UNSPSC 21.0	32151600
-------------	----------

# FLM BK IB M12 DI 8 M12 - Bus coupler



2736301

<https://www.phoenixcontact.com/us/products/2736301>

## Environmental product compliance

### EU RoHS

Fulfills EU RoHS substance requirements	Yes
Exemption	6(c), 7(a), 7(c)-I

### China RoHS

Environment friendly use period (EFUP)	EFUP-E
	No hazardous substances above the limits

### EU REACH SVHC

REACH candidate substance (CAS No.)	Lead(CAS: 7439-92-1)
-------------------------------------	----------------------

Phoenix Contact 2026 © - all rights reserved

<https://www.phoenixcontact.com>

Phoenix Contact USA  
586 Fulling Mill Road  
Middletown, PA 17057, United States  
(+717) 944-1300  
[info@phoenixcon.com](mailto:info@phoenixcon.com)