

IB IL SCN-PWR IN - Inline connector

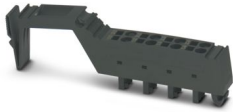


2727462

<https://www.phoenixcontact.com/us/products/2727462>

Please be informed that the data shown in this PDF document is generated from our online catalog. Please find the complete data in the user documentation. Our general terms of use for downloads are valid.

Connector, for Inline power and segment terminal blocks



Commercial data

Item number	2727462
Packing unit	1 pc
Note	Made to order (non-returnable)
Sales key	DR01
Product key	DRI1Z1
GTIN	4017918162900
Weight per piece (including packing)	15.7 g
Weight per piece (excluding packing)	15.7 g
Customs tariff number	85366990
Country of origin	DE

IB IL SCN-PWR IN - Inline connector



2727462

<https://www.phoenixcontact.com/us/products/2727462>

Technical data

Product properties

Product type	Plug
--------------	------

Connection data

Conductor cross-section, rigid	0.08 mm ² ... 1.5 mm ²
Conductor cross-section, flexible	0.08 mm ² ... 1.5 mm ²
Conductor cross-section AWG	28 ... 16
Stripping length	8 mm

Dimensions

Width	12.2 mm
Height	111.2 mm
Depth	41 mm

IB IL SCN-PWR IN - Inline connector



2727462

<https://www.phoenixcontact.com/us/products/2727462>

Environmental product compliance

China RoHS

Environment friendly use period (EFUP)	EFUP-E
	No hazardous substances above the limits

EU REACH SVHC

REACH candidate substance (CAS No.)	No substance above 0.1 wt%
-------------------------------------	----------------------------

Phoenix Contact 2026 © - all rights reserved
<https://www.phoenixcontact.com>

Phoenix Contact USA
586 Fulling Mill Road
Middletown, PA 17057, United States
(+717) 944-1300
info@phoenixcon.com