

ILC 130 SBT V2 STARTERKIT - Starter kit



2700993

<https://www.phoenixcontact.com/us/products/2700993>

Please be informed that the data shown in this PDF document is generated from our online catalog. Please find the complete data in the user documentation. Our general terms of use for downloads are valid.



ILC 130 SBT starter kit including ILC 130 ETH, LPSDO and PSDI SafetyBridge modules, control panel, power supply unit, and accessories with preconfigured safety application

Product description

The ILC 130 SBT STARTERKIT is a combination of hardware and an example project. It contains all the components you need to simulate and visualize the functions of a SafetyBridge system in the case of an example project. The starter kit hardware is provided assembled and fully configured on a board.

Your advantages

- System operation via a web browser
- Easy startup of a SafetyBridge system without programming software

Commercial data

| | |
|--------------------------------------|--------------------------------|
| Item number | 2700993 |
| Packing unit | 1 pc |
| Minimum order quantity | 1 pc |
| Note | Made to order (non-returnable) |
| Sales key | DN03 |
| Product key | DNA453 |
| GTIN | 4046356672078 |
| Weight per piece (including packing) | 2,710 g |
| Weight per piece (excluding packing) | 2,492 g |
| Customs tariff number | 85371091 |
| Country of origin | DE |

ILC 130 SBT V2 STARTERKIT - Starter kit

2700993

<https://www.phoenixcontact.com/us/products/2700993>

Set consists of

IB IL 24 PSDI 8-PAC - Safety module

2985688

<https://www.phoenixcontact.com/us/products/2985688>



Safety-related digital input module, IP20 protection, for the SafetyBridge, INTERBUS-Safety, and PROFIsafe system. The module has 4 safe digital inputs for two-channel assignment or 8 safe digital inputs for single-channel assignment.

IB IL 24 LPSDO 8 V2-PAC - Safety module

2700606

<https://www.phoenixcontact.com/us/products/2700606>



Safety-related digital output module, IP20 protection, for the SafetyBridge system. The module has four safe digital outputs with two-channel occupancy or 8 safe digital outputs with single-channel occupancy.

ILC 130 SBT V2 STARTERKIT - Starter kit

2700993

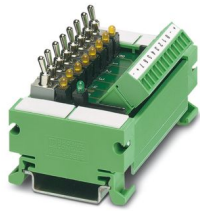
<https://www.phoenixcontact.com/us/products/2700993>



UM 45-IB-DI/SIM8 - Termination board

2962997

<https://www.phoenixcontact.com/us/products/2962997>



VARIOFACE switch module, with COMBICON connector, for simulation, for 8 signals, for mounting DIN rail NS 35

ILC 130 SBT V2 STARTERKIT - Starter kit

2700993

<https://www.phoenixcontact.com/us/products/2700993>



Technical data

Product properties

| | |
|--------------|-------------|
| Product type | Starter kit |
|--------------|-------------|

ILC 130 SBT V2 STARTERKIT - Starter kit



2700993

<https://www.phoenixcontact.com/us/products/2700993>

Environmental product compliance

EU RoHS

| | |
|---|---|
| Fulfills EU RoHS substance requirements | Not applicable, No electrical and electronic equipment (EEE), cannot be used in EEE |
|---|---|

EU REACH SVHC

| | |
|-------------------------------------|---|
| REACH candidate substance (CAS No.) | Hexahydromethylphthalic anhydride(CAS: n/a) |
| | Lead(CAS: 7439-92-1) |
| SCIP | 1037b12a-a5bd-4c88-9d7a-14d95f78da39 |

Phoenix Contact 2026 © - all rights reserved
<https://www.phoenixcontact.com>

Phoenix Contact USA
586 Fulling Mill Road
Middletown, PA 17057, United States
(+717) 944-1300
info@phoenixcon.com