

FL SM PATCH COUPLER LC-LC - FO coupling

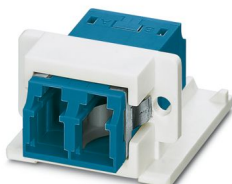


2700313

<https://www.phoenixcontact.com/us/products/2700313>

Please be informed that the data shown in this PDF document is generated from our online catalog. Please find the complete data in the user documentation. Our general terms of use for downloads are valid.

Coupling, LC/LC, can be used for single mode glass fibers



Commercial data

| | |
|--------------------------------------|--------------------------------|
| Item number | 2700313 |
| Packing unit | 1 pc |
| Note | Made to order (non-returnable) |
| Sales key | AB16 |
| Product key | ABNIDA |
| GTIN | 4046356543019 |
| Weight per piece (including packing) | 15 g |
| Weight per piece (excluding packing) | 15 g |
| Customs tariff number | 85367000 |
| Country of origin | BG |

FL SM PATCH COUPLER LC-LC - FO coupling



2700313

<https://www.phoenixcontact.com/us/products/2700313>

Technical data

Product properties

| | |
|---------------------|-------------|
| Product type | Data plug |
| Application | FO coupling |
| Sensor type | Ethernet |
| Number of positions | 2 |
| Connection profile | LC-Duplex |
| Number of slots | 1 |

Connection data

| | |
|-------------------|----------|
| Connection method | Coupling |
|-------------------|----------|

Dimensions

Mechanical characteristics

| | |
|------------------|---------|
| Ferrule diameter | 1.25 mm |
|------------------|---------|

Material specifications

| | |
|--|-------------------|
| Color | blue |
| Flammability rating according to UL 94 | V0 |
| Ferrule material | Zirconia ceramics |
| Housing material | PBT |

Cable/line

| | |
|------------|------------|
| Cable type | Fiberglass |
|------------|------------|

FO cable

| | |
|------------------|------------------------|
| Number of fibers | 2 |
| Fiber type | Single-mode fiberglass |
| Attenuation | ≤ 0.2 dB |

Mechanical properties

Mechanical data

| | |
|-----------------------------|-------|
| Insertion/withdrawal cycles | ≥ 500 |
|-----------------------------|-------|

Environmental and real-life conditions

Ambient conditions

| | |
|---|------------------|
| Degree of protection | IP20 |
| | IP20 |
| Ambient temperature (operation) | -25 °C ... 70 °C |
| Ambient temperature (storage/transport) | -40 °C ... 85 °C |
| Ambient temperature (assembly) | -5 °C ... 50 °C |
| Ambient temperature (installation) | -40 °C ... 85 °C |

FL SM PATCH COUPLER LC-LC - FO coupling



2700313

<https://www.phoenixcontact.com/us/products/2700313>

Classifications

UNSPSC

| | |
|-------------|----------|
| UNSPSC 21.0 | 43223300 |
|-------------|----------|

FL SM PATCH COUPLER LC-LC - FO coupling



2700313

<https://www.phoenixcontact.com/us/products/2700313>

Environmental product compliance

EU RoHS

| | |
|---|--------------------|
| Fulfills EU RoHS substance requirements | Yes, No exemptions |
|---|--------------------|

China RoHS

| | |
|--|--|
| Environment friendly use period (EFUP) | EFUP-E |
| | No hazardous substances above the limits |

EU REACH SVHC

| | |
|-------------------------------------|----------------------------|
| REACH candidate substance (CAS No.) | No substance above 0.1 wt% |
|-------------------------------------|----------------------------|

Phoenix Contact 2026 © - all rights reserved
<https://www.phoenixcontact.com>

Phoenix Contact USA
586 Fulling Mill Road
Middletown, PA 17057, United States
(+717) 944-1300
info@phoenixcon.com