

ME 6,2 TBUS-2 1,5/5-ST-3,81 VPE5 KMGY - DIN rail bus connector



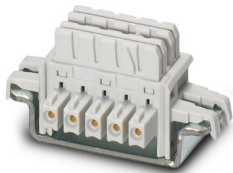
2697864

<https://www.phoenixcontact.com/us/products/2697864>

Please be informed that the data shown in this PDF document is generated from our online catalog. Please find the complete data in the user documentation. Our general terms of use for downloads are valid.



DIN rail bus connector for potential bridging of devices arranged next to one another across all modules.



Your advantages

- Space-saving installation under the housing in the DIN rail
- Contact design enables electronics modules to be easily snapped on
- Power supply and communication without additional wiring
- Parallel and serial contacts for efficient signal and data transmission
- Fast module-to-module communication without additional wiring effort

Commercial data

Item number	2697864
Packing unit	5 pc
Minimum order quantity	5 pc
Product key	ACHACA
GTIN	4046356040372
Weight per piece (including packing)	7.12 g
Weight per piece (excluding packing)	7.12 g
Country of origin	DE

ME 6,2 TBUS-2 1,5/5-ST-3,81 VPE5 KMGY - DIN rail bus connector



2697864

<https://www.phoenixcontact.com/us/products/2697864>

Technical data

Notes

Recommendation	Material of contact pads for bus connector, galvanic gold (hard gold)
----------------	---

Product properties

Product type	DIN rail bus connector
Product family	TBUS5..2-6,2..
Number of positions	5
Pitch	3.81 mm
Pin layout	Linear pinning

Electrical properties

Properties

Nominal current I_N	8 A
Nominal voltage U_N	125 V
Contact resistance	2.17 mΩ
Rated voltage (III/3)	125 V
Rated surge voltage (III/3)	2.5 kV
Rated voltage (III/2)	125 V
Rated surge voltage (III/2)	2.5 kV

Material specifications

Material data - contact

Note	WEEE/RoHS-compliant, free of whiskers according to IEC 60068-2-82/JEDEC JESD 201
Contact material	Cu alloy
Surface characteristics	gold-plated

Material data - housing

Color (Housing)	light gray (7035)
Insulating material	PBT
Insulating material group	I
CTI according to IEC 60112	600
Flammability rating according to UL 94	V0
Temperature for the ball pressure test according to EN 60695-10-2	125 °C

material specifications - connector

Color ()	()
----------	----

Dimensions

ME 6,2 TBUS-2 1,5/5-ST-3,81 VPE5 KMGY - DIN rail bus connector



2697864

<https://www.phoenixcontact.com/us/products/2697864>

Pitch	3.81 mm
Width [w]	19.25 mm
Height [h]	36.3 mm
Length [l]	17.65 mm

Mounting

Mounting type	DIN rail mounting
Pin layout	Linear pinning

Mechanical tests

Insertion and withdrawal forces

Result	Test passed
No. of cycles	25
Insertion strength per pos. approx.	2.18 N
Withdraw strength per pos. approx.	1.38 N

Polarization and coding

Specification	IEC 60512-13-5:2006-02
Result	Test passed

Visual inspection

Specification	IEC 60512-1-1:2002-02
Result	Test passed

Dimension check

Specification	IEC 60512-1-2:2002-02
Result	Test passed

Environmental and real-life conditions

Durability test

Specification	IEC 60512-9-1:2010-03
Impulse withstand voltage at sea level	2.9 kV
Contact resistance R_1	2.17 m Ω
Contact resistance R_2	2.26 m Ω
Insertion/withdrawal cycles	25

Climatic test

Specification	DIN 50018:2013-05
Corrosive stress	0.2 dm ³ SO ₂ on 300 dm ³ /40 °C/1 cycle
Thermal stress	100 °C/168 h
Power-frequency withstand voltage	1.4 kV

Vibration test

Specification	IEC 60068-2-6:2007-12
---------------	-----------------------

ME 6,2 TBUS-2 1,5/5-ST-3,81 VPE5 KMGY - DIN rail bus connector



2697864

<https://www.phoenixcontact.com/us/products/2697864>

Frequency	10 - 150 - 10 Hz
Sweep speed	1 octave/min
Amplitude	0.35 mm (10 Hz ... 60.1 Hz)
Acceleration	5g (60.1 Hz ... 150 Hz)
Test duration per axis	2.5 h
Test directions	X-, Y- and Z-axis (pos. and neg.)

Shocks

Specification	IEC 60068-2-27:2008-02
Pulse shape	Semi-sinusoidal
Acceleration	30g
Shock duration	18 ms
Test directions	X-, Y- and Z-axis (pos. and neg.)

Ambient conditions

Ambient temperature (storage/transport)	-40 °C ... 55 °C
Relative humidity (storage/transport)	30 % ... 70 %
Ambient temperature (assembly)	-5 °C ... 100 °C
Ambient temperature (operation)	-40 °C ... 105 °C (dependent on the derating curve)

Ambient conditions

Ambient temperature (operation)	-40 °C ... 105 °C (dependent on the derating curve)
Ambient temperature (storage/transport)	-40 °C ... 55 °C
Relative humidity (storage/transport)	30 % ... 70 %
Ambient temperature (assembly)	-5 °C ... 100 °C

Electrical tests

Thermal test | Test group C

Specification	IEC 60512-5-1:2002-02
Tested number of positions	5

Air clearances and creepage distances |

Specification	IEC 60664-1:2007-04
Insulating material group	I
Rated insulation voltage (III/3)	125 V
Rated surge voltage (III/3)	2.5 kV
minimum clearance value - non-homogenous field (III/3)	1.5 mm
minimum creepage distance (III/3)	1.9 mm
Rated insulation voltage (III/2)	125 V
Rated surge voltage (III/2)	2.5 kV
minimum clearance value - non-homogenous field (III/2)	1.5 mm
minimum creepage distance (III/2)	1.5 mm

ME 6,2 TBUS-2 1,5/5-ST-3,81 VPE5 KMGY - DIN rail bus connector

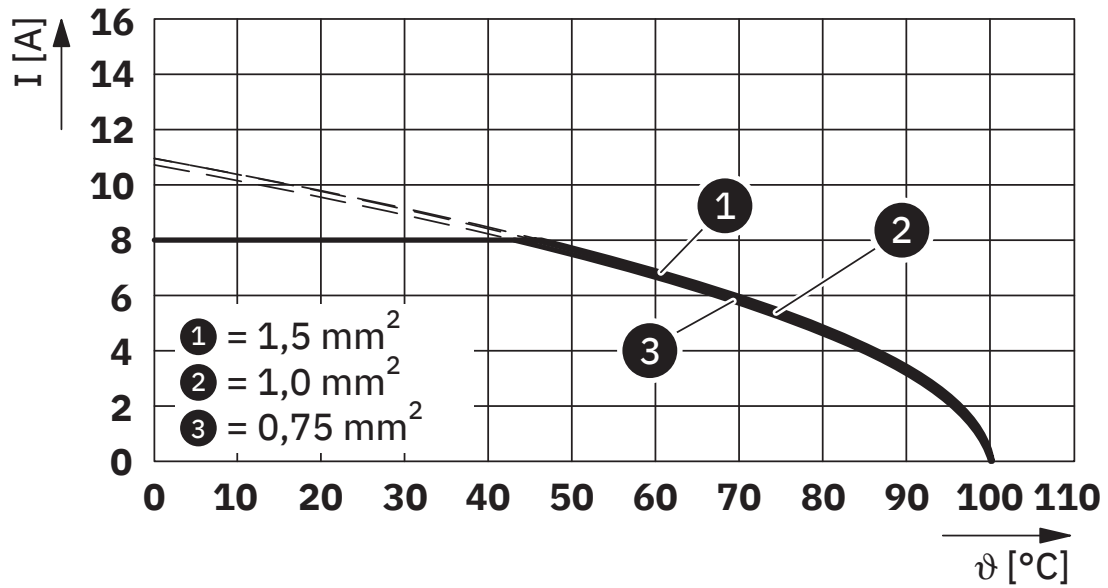


2697864

<https://www.phoenixcontact.com/us/products/2697864>

Drawings

Diagram



Type: ME 6,2 TBUS-2 1,5/5-ST-3,81 ...

ME 6,2 TBUS-2 1,5/5-ST-3,81 VPE5 KMGY - DIN rail bus connector





2697864

<https://www.phoenixcontact.com/us/products/2697864>

Approvals

To download certificates, visit the product detail page: <https://www.phoenixcontact.com/us/products/2697864>

 cUL Recognized Approval ID: FILE E 60425				
	Nominal voltage U_N	Nominal current I_N	Cross section AWG	Cross section mm^2
B				
	150 V	8 A	-	-
D				
	150 V	8 A	-	-

 UL Recognized Approval ID: FILE E 60425				
	Nominal voltage U_N	Nominal current I_N	Cross section AWG	Cross section mm^2
B				
	150 V	8 A	-	-
D				
	150 V	8 A	-	-

ME 6,2 TBUS-2 1,5/5-ST-3,81 VPE5 KMGY - DIN rail bus connector



2697864

<https://www.phoenixcontact.com/us/products/2697864>

Classifications

ECLASS

ECLASS-13.0	27460201
ECLASS-15.0	27460201

ETIM

ETIM 10.0	EC002637
-----------	----------

UNSPSC

UNSPSC 21.0	39121400
-------------	----------

ME 6,2 TBUS-2 1,5/5-ST-3,81 VPE5 KMGY - DIN rail bus connector



2697864

<https://www.phoenixcontact.com/us/products/2697864>

Environmental product compliance

EU RoHS

Fulfills EU RoHS substance requirements	Yes, No exemptions
---	--------------------

China RoHS

Environment friendly use period (EFUP)	EFUP-E
	No hazardous substances above the limits

EU REACH SVHC

REACH candidate substance (CAS No.)	No substance above 0.1 wt%
-------------------------------------	----------------------------

EF3.1 Climate Change

CO2e kg	0.126 kg CO2e
---------	---------------

Phoenix Contact 2026 © - all rights reserved
<https://www.phoenixcontact.com>

Phoenix Contact USA
586 Fulling Mill Road
Middletown, PA 17057, United States
(+717) 944-1300
info@phoenixcon.com