

# UM 72-SEFE/L KMGY - Lateral element

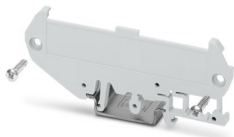


2695853

<https://www.phoenixcontact.com/us/products/2695853>

Please be informed that the data shown in this PDF document is generated from our online catalog. Please find the complete data in the user documentation. Our general terms of use for downloads are valid.

Press-drawn section housings, DIN rail mounting, screw connection with extruded profile, Side element (left) with mounting foot for the DIN rail, with snap-on foot, width: 5 mm, height: 89.6 mm, depth: 37.6 mm



## Your advantages

- Easy installation
- Flexible size and shape
- Inexpensive as a result of reducing the number of separate housing parts

## Commercial data

Item number	2695853
Packing unit	10 pc
Minimum order quantity	20 pc
Product key	ACHDBA
GTIN	4046356479608
Weight per piece (including packing)	6.71 g
Weight per piece (excluding packing)	6.61 g
Country of origin	PL

# UM 72-SEFE/L KMGY - Lateral element



2695853

<https://www.phoenixcontact.com/us/products/2695853>

## Technical data

### Product properties

Product type	Panel mounting base side part
Housing type	Press-drawn section housings
Housing series	UM
Product family	UM72
Ventilation openings present	no

### Dimensions

Width	5 mm
Height	89.6 mm
Depth	37.6 mm

### Material specifications

Color (Side element)	light gray (RAL 7035)
Material Lateral element	PA
Flammability rating according to UL 94	V0
Surface characteristics	untreated

### Environmental and real-life conditions

#### Ambient conditions

Max. IP code to attain	IP20
Ambient temperature (operation)	-40 °C ... 105 °C (depending on power dissipation)
Ambient temperature (storage/transport)	-40 °C ... 55 °C
Ambient temperature (assembly)	-5 °C ... 100 °C
Relative humidity (storage/transport)	80 %

### PCB data

Number of PCB holders	2
-----------------------	---

### Mounting

Mounting type	DIN rail mounting, screw connection with extruded profile
---------------	---

# UM 72-SEFE/L KMGY - Lateral element



2695853

<https://www.phoenixcontact.com/us/products/2695853>

## Approvals

To download certificates, visit the product detail page: <https://www.phoenixcontact.com/us/products/2695853>



**UL Recognized**

Approval ID: E240868

# UM 72-SEFE/L KMGY - Lateral element



2695853

<https://www.phoenixcontact.com/us/products/2695853>

## Classifications

### ECLASS

ECLASS-13.0	27190602
ECLASS-15.0	27190602

### ETIM

ETIM 10.0	EC002779
-----------	----------

### UNSPSC

UNSPSC 21.0	31261500
-------------	----------

# UM 72-SEFE/L KMGY - Lateral element



2695853

<https://www.phoenixcontact.com/us/products/2695853>

## Environmental product compliance

### EU RoHS

Fulfills EU RoHS substance requirements	Yes, No exemptions
---	--------------------

### China RoHS

Environment friendly use period (EFUP)	EFUP-E
	No hazardous substances above the limits

### EU REACH SVHC

REACH candidate substance (CAS No.)	No substance above 0.1 wt%
-------------------------------------	----------------------------

Phoenix Contact 2026 © - all rights reserved  
<https://www.phoenixcontact.com>

Phoenix Contact USA  
586 Fulling Mill Road  
Middletown, PA 17057, United States  
(+717) 944-1300  
[info@phoenixcon.com](mailto:info@phoenixcon.com)