

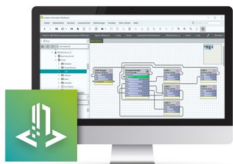
NC4-5000 - Building management system



2404197

<https://www.phoenixcontact.com/us/products/2404197>

Please be informed that the data shown in this PDF document is generated from our online catalog. Please find the complete data in the user documentation. Our general terms of use for downloads are valid.



Emalytics Controller license to integrate 5000 data points (separate maintenance license required)



Commercial data

Item number	2404197
Packing unit	1 pc
Note	Made to order (non-returnable)
Sales key	DR18
Product key	DRHBAA
GTIN	4055626349473
Weight per piece (including packing)	0.001 MGM
Weight per piece (excluding packing)	0.001 MGM
Customs tariff number	49119900
Country of origin	US

2404197

<https://www.phoenixcontact.com/us/products/2404197>

Technical data

Product properties

Product type	Building management system
Area of application	Building technology

System properties

Type of software	Embedded
Intended use for the software	Automation

License information

Type of license	Runtime license
License duration	not relevant

Functionality

Integrated function	Analysis
	Data acquisition
	Diagnostics
	Startup
	Communication
	Configuration
	Project planning
	Simulation
Target system	Automation station
Supported controller	ILC 2050 BI
	ILC 2250 BI
Number of data points (Embedded)	5000
Number of data points (embedded)	5000
Number of clients	nicht relevant

System requirements

Languages supported	German, English
Screen resolution	1024 x 768 pixel(s) ,or higher

NC4-5000 - Building management system



2404197

<https://www.phoenixcontact.com/us/products/2404197>

Classifications

ECLASS

ECLASS-13.0	27242590
ECLASS-15.0	27242590

ETIM

ETIM 10.0	EC001435
-----------	----------

UNSPSC

UNSPSC 21.0	43233600
-------------	----------

NC4-5000 - Building management system



2404197

<https://www.phoenixcontact.com/us/products/2404197>

Environmental product compliance

EU RoHS

Fulfills EU RoHS substance requirements	Not applicable, No electrical and electronic equipment (EEE), cannot be used in EEE
-----------------------------------------	-------------------------------------------------------------------------------------

EU REACH SVHC

REACH candidate substance (CAS No.)	No substance above 0.1 wt%
-------------------------------------	----------------------------

Phoenix Contact 2026 © - all rights reserved

<https://www.phoenixcontact.com>

Phoenix Contact USA
586 Fulling Mill Road
Middletown, PA 17057, United States
(+717) 944-1300
info@phoenixcon.com