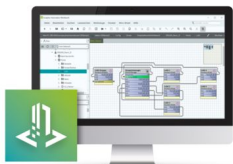


Please be informed that the data shown in this PDF document is generated from our online catalog. Please find the complete data in the user documentation. Our general terms of use for downloads are valid.

## Emalytics Supervisor license for SQL database driver



## Commercial data

Item number	2404173
Packing unit	1 pc
Note	Made to order (non-returnable)
Sales key	DR18
Product key	DRHBAA
GTIN	4055626349237
Weight per piece (including packing)	23.4 g
Weight per piece (excluding packing)	23.4 g
Customs tariff number	49119900
Country of origin	US

## Technical data

### Product properties

Product type	Building management system
Area of application	Building technology

### System properties

Type of software	On-premises
Intended use for the software	Automation

### License information

Type of license	Driver license
License duration	not relevant

### Functionality

Integrated function	Analysis
	Data acquisition
	Diagnostics
	Startup
	Communication
	Configuration
	Project planning
	Simulation
Target system	Server
Supported controller	ILC 2050 BI
	ILC 2250 BI
	Catan C1 EN
Number of data points	not relevant
Number of clients	nicht relevant

### System requirements

Operating system	Windows® 10
	Windows® 8.1 Enterprise (64-Bit)
	Windows® Server 2012 Standard
	Windows® Server 2012 R2 Standard
Hard disk memory	min. 4 GByte (more recommended depending on the archiving requirements)
Interfaces	1 x Ethernet (10/100 Mbps), RJ45
Languages supported	German, English

2404173

<https://www.phoenixcontact.com/us/products/2404173>

## Classifications

### ECLASS

ECLASS-13.0	27242590
ECLASS-15.0	27242590

### ETIM

ETIM 10.0	EC001435
-----------	----------

### UNSPSC

UNSPSC 21.0	43233600
-------------	----------

## Environmental product compliance

### EU RoHS

Fulfills EU RoHS substance requirements	Not applicable, No electrical and electronic equipment (EEE), cannot be used in EEE
---	---

### EU REACH SVHC

REACH candidate substance (CAS No.)	No substance above 0.1 wt%
-------------------------------------	----------------------------

### EF3.1 Climate Change

CO2e kg	0.398 kg CO2e
---------	---------------

Phoenix Contact 2026 © - all rights reserved  
<https://www.phoenixcontact.com>

Phoenix Contact USA  
586 Fulling Mill Road  
Middletown, PA 17057, United States  
(+717) 944-1300  
[info@phoenixcon.com](mailto:info@phoenixcon.com)