

FLKM 50-PA-GE/TKFC/RXI - Front adapter



2321473

<https://www.phoenixcontact.com/us/products/2321473>

Please be informed that the data shown in this PDF document is generated from our online catalog. Please find the complete data in the user documentation. Our general terms of use for downloads are valid.



VARIOFACE front adapter, for GE Fanuc PACSystems RX3i, max. 1x 32 channels can be connected.

Your advantages

- Can be plugged onto I/O modules
- Connection via suitable VARIOFACE termination boards
- Transmission of a maximum of 32 channels via a 50-pos. system cable

Commercial data

Item number	2321473
Packing unit	1 pc
Minimum order quantity	1 pc
Note	Made to order (non-returnable)
Sales key	C421
Product key	DK231G
GTIN	4046356339872
Weight per piece (including packing)	136.1 g
Weight per piece (excluding packing)	129 g
Customs tariff number	85369010
Country of origin	DE

Technical data

Product properties

Product type	Front adapter
--------------	---------------

Insulation characteristics

Insulation	Functional insulation
Overvoltage category	II
Pollution degree	2

Electrical properties

Operating voltage (AC)	≤ 25 V AC
Operating voltage (DC)	≤ 60 V DC
Current (Per path)	≤ 1 A
Current (per connection)	≤ 8 A (Feed-in via separate power supply)
Rated insulation voltage	63 V
Rated surge voltage	0.6 kV

Supported controller: GE-FANUC RX3i

Suitable I/O card	IC694MDL754
-------------------	-------------

Connection data

Field level

Connection method	IDC/FLK pin strip
Number of connections	1
Number of positions	50
Pitch	2.54 mm

Supply

Connection method	Pluggable spring-cage connection
Conductor cross-section rigid	0.2 mm ² ... 2.5 mm ²
Conductor cross-section flexible	0.2 mm ² ... 2.5 mm ²
Conductor cross-section AWG	24 ... 12

Dimensions

Item dimensions

Width	34.8 mm
Height	108.5 mm
Depth	59.62 mm

Environmental and real-life conditions

Ambient conditions

Degree of protection	IP00
Ambient temperature (operation)	-20 °C ... 50 °C

FLKM 50-PA-GE/TKFC/RXI - Front adapter



2321473

<https://www.phoenixcontact.com/us/products/2321473>

Ambient temperature (storage/transport)	-20 °C ... 70 °C
---	------------------

Standards and regulations

Standards/regulations	DIN EN 50178
	IEC 60664

Mounting

Mounting position	any
-------------------	-----

Notes

Notes on operation	For proper use, the specifications of the installation directive (see Downloads) must be observed. For applications or use with third-party products, the specifications, and the safety and warning instructions of the respective third-party manufacturer must also be met.
--------------------	--

FLKM 50-PA-GE/TKFC/RXI - Front adapter

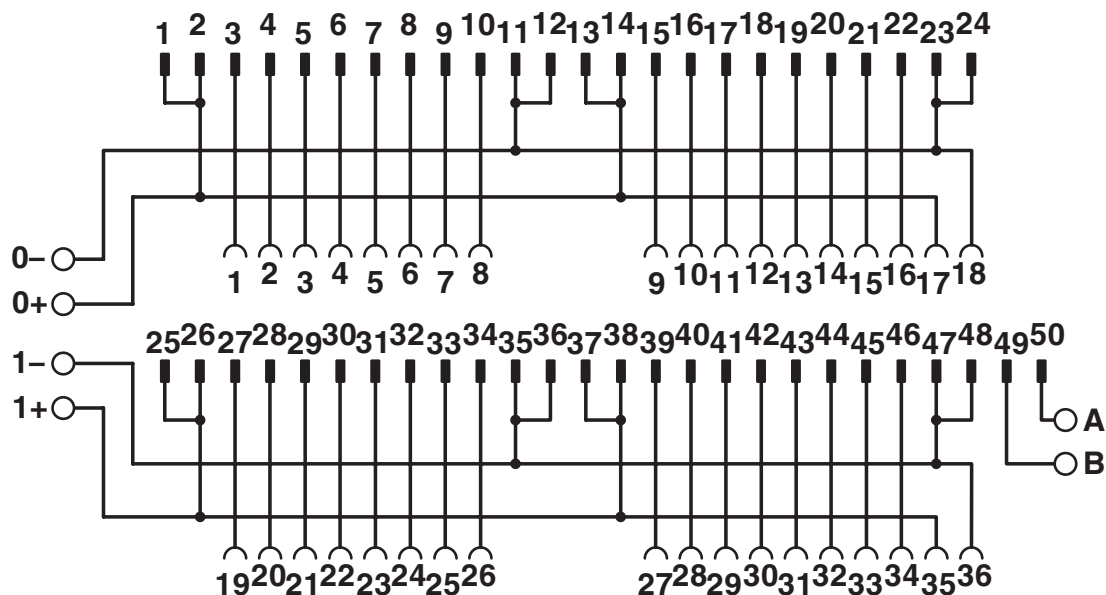


2321473

<https://www.phoenixcontact.com/us/products/2321473>

Drawings

Circuit diagram



Connection scheme for FLKM 50-PA-GE/TKFC/RXI

FLKM 50-PA-GE/TKFC/RXI - Front adapter



2321473

<https://www.phoenixcontact.com/us/products/2321473>

Classifications

ECLASS

ECLASS-13.0

27242292

UNSPSC

UNSPSC 21.0

32151600

FLKM 50-PA-GE/TKFC/RXI - Front adapter



2321473

<https://www.phoenixcontact.com/us/products/2321473>

Environmental product compliance

EU RoHS

Fulfills EU RoHS substance requirements	Yes, No exemptions
---	--------------------

China RoHS

Environment friendly use period (EFUP)	EFUP-E
	No hazardous substances above the limits

EU REACH SVHC

REACH candidate substance (CAS No.)	No substance above 0.1 wt%
-------------------------------------	----------------------------

Phoenix Contact 2026 © - all rights reserved
<https://www.phoenixcontact.com>

Phoenix Contact USA
586 Fulling Mill Road
Middletown, PA 17057, United States
(+717) 944-1300
info@phoenixcon.com