

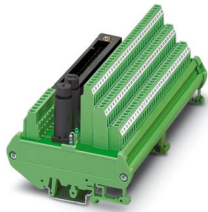
FLKMS-KS50/32IM/YCS - Passive module



2314451

<https://www.phoenixcontact.com/us/products/2314451>

Please be informed that the data shown in this PDF document is generated from our online catalog. Please find the complete data in the user documentation. Our general terms of use for downloads are valid.



32-channel module with a three-conductor screw connection and redundant power supply. Suitable for Yokogawa cards ADV151 and ADV551.

Your advantages

- For ADV 151 and ADV 551 digital modules
- Three-wire connection (signal, positive, negative)
- Redundant voltage supply (IEC 127-2, 5 x 20, 2 A fuse)

Commercial data

Item number	2314451
Packing unit	1 pc
Minimum order quantity	1 pc
Note	Made to order (non-returnable)
Sales key	C421
Product key	DK218N
GTIN	4046356126922
Weight per piece (including packing)	510 g
Weight per piece (excluding packing)	433.68 g
Customs tariff number	85369010
Country of origin	DE

FLKMS-KS50/32IM/YCS - Passive module



2314451

<https://www.phoenixcontact.com/us/products/2314451>

Technical data

Product properties

Product type	Interface module
No. of channels	32

Insulation characteristics: Air clearances and creepage distances

Insulation	Functional insulation
Overvoltage category	II
Pollution degree	2

Electrical properties

Operating voltage range	19.2 V DC ... 30 V DC
Fuse	2 A 5x20 (fast-blow) (F01, F02)
Current (per branch)	≤ 1 A
Current (Voltage supply P1+, P2+)	≤ 2 A

Air clearances and creepage distances

Rated insulation voltage	50 V
Rated surge voltage	0.5 kV (1.2/50 μs)

Supported controller: YOKOGAWA CS3000 CentumVP

Suitable I/O card	ADV151
	ADV161
	ADV551
	ADV561

Supported controller: YOKOGAWA STARDOM

Suitable I/O card	NFDV151
	NFDV161
	NFDV551
	NFDV561

Connection data

Connection 1 (control level)

Connection method	Yokogawa, KS compatible
Number of connections	1
Number of positions	50
Note	Usable system cables: Phoenix Contact YUC50, Yokogawa AKB331
Tightening torque	0.5 Nm
Pitch	2.54 mm

Connection 2 (field level)

Connection method	Screw connection
-------------------	------------------

FLKMS-KS50/32IM/YCS - Passive module



2314451

<https://www.phoenixcontact.com/us/products/2314451>

Stripping length	7 mm
Screw thread	M3
Number of positions	96
Conductor cross-section rigid	0.2 mm ² ... 4 mm ²
Conductor cross-section rigid (2 conductors with same cross section)	0.2 mm ² ... 1.5 mm ²
Conductor cross-section flexible	0.2 mm ² ... 2.5 mm ²
	0.25 mm ² ... 1.5 mm ² (Ferrule without plastic sleeve)
	0.25 mm ² ... 2.5 mm ² (Ferrule with plastic sleeve)
Conductor cross-section flexible (2 conductors with same cross section)	0.2 mm ² ... 1.5 mm ²
	0.2 mm ² ... 0.75 mm ² (Ferrule without plastic sleeve)
	0.5 mm ² ... 0.5 mm ² (TWIN ferrule with plastic sleeve)
Conductor cross-section AWG	24 ... 12
Tightening torque	0.5 Nm ... 0.6 Nm
Pitch	5.08 mm

Connection 3 (supply)

Connection method	Screw connection
Stripping length	8 mm
Screw thread	M3
Number of positions	8
Conductor cross-section rigid	0.2 mm ² ... 4 mm ²
Conductor cross-section rigid (2 conductors with same cross section)	0.2 mm ² ... 1.5 mm ²
Conductor cross-section flexible	0.2 mm ² ... 2.5 mm ²
	0.25 mm ² ... 2.5 mm ² (Ferrule without plastic sleeve)
	0.25 mm ² ... 2.5 mm ² (Ferrule with plastic sleeve)
Conductor cross-section flexible (2 conductors with same cross section)	0.2 mm ² ... 1.5 mm ²
	0.25 mm ² ... 0.75 mm ² (Ferrule without plastic sleeve)
	0.5 mm ² ... 1.5 mm ² (TWIN ferrule with plastic sleeve)
Conductor cross-section AWG	24 ... 12
Tightening torque	0.5 Nm ... 0.6 Nm
Pitch	5.08 mm

Signaling

Status display present	yes
Operating voltage display	Green LED

Dimensions

Item dimensions

Width	174 mm
Height	89.6 mm
Depth	79.3 mm

Environmental and real-life conditions

FLKMS-KS50/32IM/YCS - Passive module



2314451

<https://www.phoenixcontact.com/us/products/2314451>

Ambient conditions

Degree of protection (Module)	IP00
Degree of protection (Installation location)	≤ IP54
Ambient temperature (operation)	-20 °C ... 70 °C
Ambient temperature (storage/transport)	-20 °C ... 70 °C
Altitude	≤ 2000 m

Approvals

UKCA

Certificate	UKCA-compliant
-------------	----------------

Standards and regulations

Air clearances and creepage distances

Standards/regulations	EN IEC 60664-1
-----------------------	----------------

Mounting

Mounting type	DIN rail mounting
Mounting position	any

Notes

Notes on operation	For proper use, the specifications of the installation directive (see Downloads) must be observed. For applications or use with third-party products, the specifications, and the safety and warning instructions of the respective third-party manufacturer must also be met.
--------------------	--

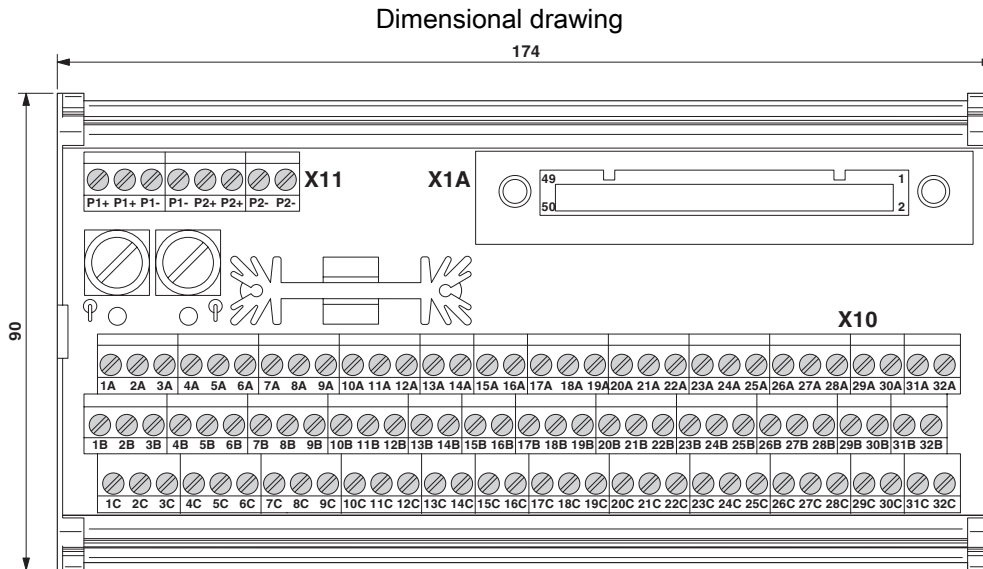
FLKMS-KS50/32IM/YCS - Passive module



2314451

<https://www.phoenixcontact.com/us/products/2314451>

Drawings



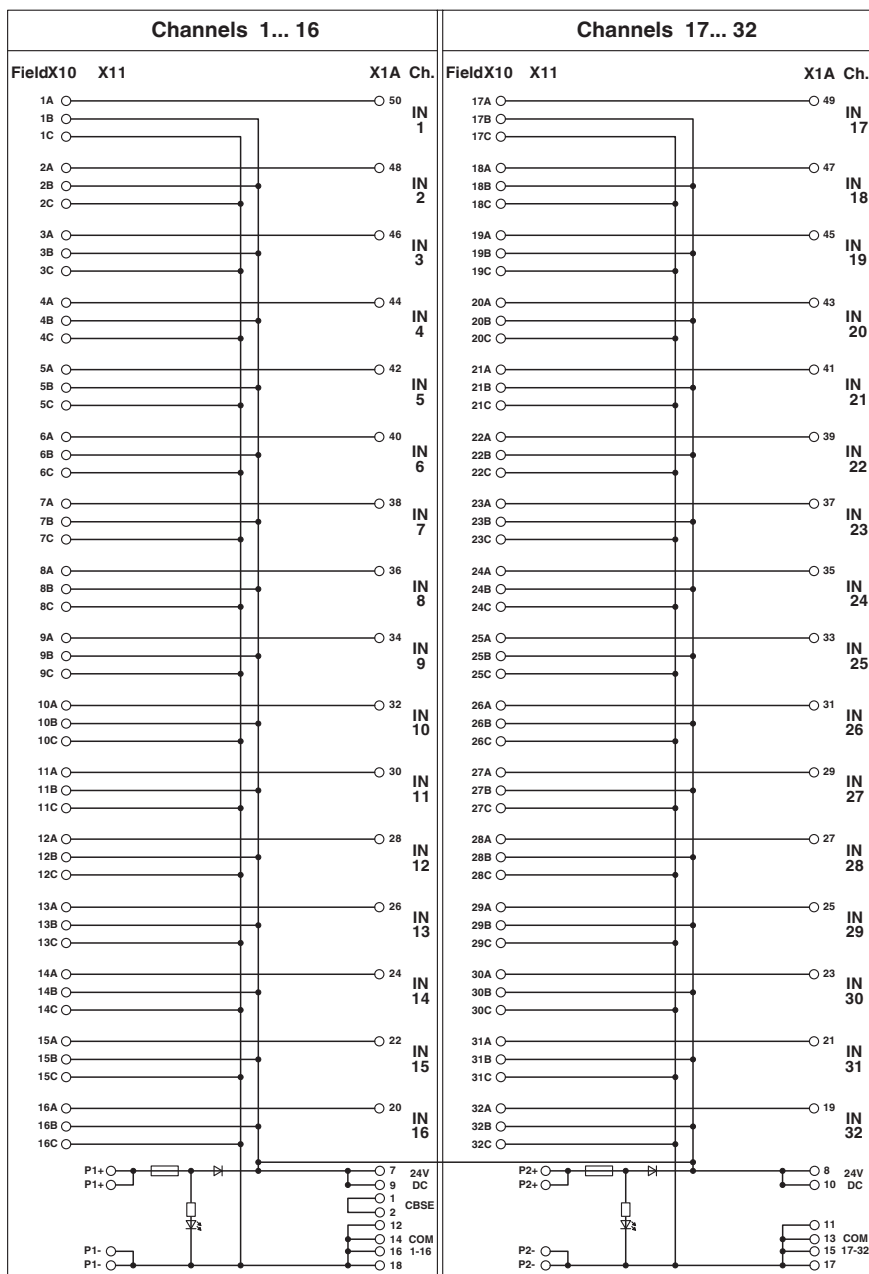
FLKMS-KS50/32IM/YCS - Passive module



2314451

<https://www.phoenixcontact.com/us/products/2314451>

Circuit diagram



FLKMS-KS50/32IM/YCS - Passive module




2314451

<https://www.phoenixcontact.com/us/products/2314451>

Approvals

To download certificates, visit the product detail page: <https://www.phoenixcontact.com/us/products/2314451>

 CSA Approval ID: LR 13631				
	Nominal voltage U_N	Nominal current I_N	Cross section AWG	Cross section mm^2
keine				
	24 V	2 A	-	-

FLKMS-KS50/32IM/YCS - Passive module



2314451

<https://www.phoenixcontact.com/us/products/2314451>

Classifications

ECLASS

ECLASS-13.0	27141152
ECLASS-15.0	27141152

ETIM

ETIM 10.0	EC002780
-----------	----------

UNSPSC

UNSPSC 21.0	39121400
-------------	----------

FLKMS-KS50/32IM/YCS - Passive module



2314451

<https://www.phoenixcontact.com/us/products/2314451>

Environmental product compliance

EU RoHS

Fulfills EU RoHS substance requirements	Yes
Exemption	7(a), 7(c)-I

China RoHS

Environment friendly use period (EFUP)	EFUP-50
	An article-related China RoHS declaration table can be found in the download area for the respective article under "Manufacturer declaration". For all articles with EFUP-E, no China RoHS declaration table issued and required.

EU REACH SVHC

REACH candidate substance (CAS No.)	Lead(CAS: 7439-92-1)
SCIP	2fe27b31-1ef9-4077-9c5c-4751bef32140

Phoenix Contact 2026 © - all rights reserved

<https://www.phoenixcontact.com>

Phoenix Contact USA
586 Fulling Mill Road
Middletown, PA 17057, United States
(+717) 944-1300
info@phoenixcon.com