

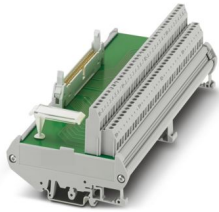
# FLKM 50/32P/PLC - Passive module



2291121

<https://www.phoenixcontact.com/us/products/2291121>

Please be informed that the data shown in this PDF document is generated from our online catalog. Please find the complete data in the user documentation. Our general terms of use for downloads are valid.



VARIOFACE interface module, for 32 channels, each with an additional terminal block per signal for a common plus potential

## Your advantages

- Byte-by-byte labeling
- Can be used for all digital I/O modules
- Positive connection per signal

## Commercial data

|                                      |               |
|--------------------------------------|---------------|
| Item number                          | 2291121       |
| Packing unit                         | 1 pc          |
| Minimum order quantity               | 1 pc          |
| Sales key                            | C421          |
| Product key                          | DK2181        |
| GTIN                                 | 4017918058265 |
| Weight per piece (including packing) | 408 g         |
| Weight per piece (excluding packing) | 300.96 g      |
| Customs tariff number                | 85369010      |
| Country of origin                    | DE            |

# FLKM 50/32P/PLC - Passive module



2291121

<https://www.phoenixcontact.com/us/products/2291121>

## Technical data

### Product properties

|                     |                  |
|---------------------|------------------|
| Product type        | Interface module |
| Product family      | VARIOFACE        |
| Number of positions | 50               |
| No. of channels     | 32               |

### Insulation characteristics: Air clearances and creepage distances

|                      |                       |
|----------------------|-----------------------|
| Insulation           | Functional insulation |
| Overvoltage category | II                    |
| Pollution degree     | 2                     |

### Electrical properties

|                          |           |
|--------------------------|-----------|
| Operating voltage (DC)   | ≤ 60 V DC |
| Current (per branch)     | ≤ 1 A     |
| Current (Voltage supply) | ≤ 8 A     |

### Air clearances and creepage distances

|                          |                    |
|--------------------------|--------------------|
| Rated insulation voltage | 63 V               |
| Rated surge voltage      | 0.6 kV (1.2/50 μs) |

### Supported controller: SIEMENS S7-1500

|                   |                    |
|-------------------|--------------------|
| Suitable I/O card | 6ES7521-1BL00-0AB0 |
|                   | 6ES7522-1BL00-0AB0 |
|                   | 6ES7522-1BL01-0AB0 |

### Supported controller: SIEMENS S7-400

|                   |                    |
|-------------------|--------------------|
| Suitable I/O card | 6ES7421-1BL01-0AA0 |
|                   | 6ES7422-1BL00-0AA0 |
|                   | 6ES7422-7BL00-0AB0 |

### Supported controller: ALLEN-BRADLEY ControlLogix

|                   |           |
|-------------------|-----------|
| Suitable I/O card | 1756-IB32 |
|                   | 1756-OB32 |

### Supported controller: ALLEN-BRADLEY PLC 5

|                   |          |
|-------------------|----------|
| Suitable I/O card | 1771 IBN |
|                   | 1771 OBN |

### Supported controller: HONEYWELL Experion PKS C200

|                   |            |
|-------------------|------------|
| Suitable I/O card | TC-IDD 321 |
|                   | TC-ODD 321 |

### Supported controller: MITSUBISHI MELSEC L

|                   |        |
|-------------------|--------|
| Suitable I/O card | LX41C4 |
|                   | LX42C4 |

# FLKM 50/32P/PLC - Passive module



2291121

<https://www.phoenixcontact.com/us/products/2291121>

|  |          |
|--|----------|
|  | LY41NT1P |
|  | LY42NT1P |
|  | LY41PT1P |
|  | LY42PT1P |

Supported controller: MITSUBISHI MELSEC Q

|                   |         |
|-------------------|---------|
| Suitable I/O card | QX81    |
|                   | QY81P   |
|                   | QX41    |
|                   | QX41-S1 |
|                   | QX42    |
|                   | QX42-S1 |
|                   | QX71    |
|                   | QX72    |
|                   | QY41P   |
|                   | QY42P   |
|                   | QY71    |
|                   | QH42P   |
|                   | QX82    |
|                   | QX82-S1 |
|                   | QY82P   |

Supported controller: SCHNEIDER ELECTRIC Modicon TSX QUANTUM

|                   |         |
|-------------------|---------|
| Suitable I/O card | DDI 353 |
|                   | DDI 853 |
|                   | DAI 453 |
|                   | DDO 353 |

Supported controller: SIEMENS S7-300 / ET 200 M

|                   |                    |
|-------------------|--------------------|
| Suitable I/O card | CPU 313C-2DP       |
|                   | CPU 314C-2DP       |
|                   | CPU 314C-2PtP      |
|                   | 6ES7321-1BL00-0AA0 |
|                   | 6ES7322-1BL00-0AA0 |
|                   | 6ES7323-1BL00-0AA0 |
|                   | CPU 313C           |
|                   | CPU 313C-2PtP      |

Supported controller: GE-FANUC RX3i

|                   |             |
|-------------------|-------------|
| Suitable I/O card | IC694MDL754 |
|                   | IC694MDL660 |

Supported controller: SIEMENS ET 200SP HA

|                         |                    |
|-------------------------|--------------------|
| Suitable terminal block | 6DL1193-6TP00-0BH1 |
|                         | 6DL1193-6TP00-0DH1 |
|                         | 6DL1193-6TP00-0BM1 |

# FLKM 50/32P/PLC - Passive module



2291121

<https://www.phoenixcontact.com/us/products/2291121>

|                     |   |
|---------------------|---|
|                     | 6DL1193-6TP00-0DM1                        |
| Suitable I/O module | 6DL1131-6BL00-0PH1 (Terminal Block H1/M1) |
|                     | 6DL1132-6BL00-0PH1 (Terminal Block H1/M1) |

## Connection data

### Connection 1 (control level)

|                                  |                   |
|----------------------------------|-------------------|
| Connection in acc. with standard | IEC 60603-13      |
| Connection method                | IDC/FLK pin strip |
| Number of connections            | 1                 |
| Number of positions              | 50                |
| Insertion/withdrawal cycles      | > 50              |
| Pitch                            | 2.54 mm           |

### Connection 2 (field level)

|   |  |
|---|--|
| Connection method   | Screw connection   |
| Stripping length  | 7 mm   |
| Screw thread  | M3   |
| Number of positions   | 72   |
| Conductor cross-section rigid   | 0.2 mm <sup>2</sup> ... 4 mm <sup>2</sup>                                      |
| Conductor cross-section rigid (2 conductors with same cross section)    | 0.2 mm <sup>2</sup> ... 1.5 mm <sup>2</sup>                                    |
| Conductor cross-section flexible  | 0.2 mm <sup>2</sup> ... 2.5 mm <sup>2</sup>                                    |
|   | 0.25 mm <sup>2</sup> ... 1.5 mm <sup>2</sup> (Ferrule without plastic sleeve)  |
|   | 0.25 mm <sup>2</sup> ... 2.5 mm <sup>2</sup> (Ferrule with plastic sleeve)     |
| Conductor cross-section flexible (2 conductors with same cross section) | 0.2 mm <sup>2</sup> ... 1.5 mm <sup>2</sup>                                    |
|   | 0.25 mm <sup>2</sup> ... 0.75 mm <sup>2</sup> (Ferrule without plastic sleeve) |
|   | 0.5 mm <sup>2</sup> ... 0.5 mm <sup>2</sup> (TWIN ferrule with plastic sleeve) |
| Conductor cross-section AWG   | 24 ... 12  |
| Tightening torque   | 0.5 Nm ... 0.6 Nm  |
| Pitch   | 5.08 mm  |

## Signaling

|                        |    |
|------------------------|----|
| Status display present | no |
|------------------------|----|

## Dimensions

### Item dimensions

|        |          |
|--------|----------|
| Width  | 190.8 mm |
| Height | 89.6 mm  |
| Depth  | 65.9 mm  |

## Material specifications

|                             |                 |
|-----------------------------|-----------------|
| Color                       | gray (RAL 7042) |
| Housing insulation material | PVC             |

# FLKM 50/32P/PLC - Passive module



2291121

<https://www.phoenixcontact.com/us/products/2291121>

## Environmental and real-life conditions

### Ambient conditions

|  |                  |
|--|------------------|
| Degree of protection (Module)                | IP00             |
| Degree of protection (Installation location) | ≥ IP54           |
| Ambient temperature (operation)              | -20 °C ... 50 °C |
| Ambient temperature (storage/transport)      | -20 °C ... 70 °C |
| Altitude                                     | ≤ 2000 m         |

## Approvals

### UKCA

|             |                |
|-------------|----------------|
| Certificate | UKCA-compliant |
|-------------|----------------|

## Standards and regulations

### Air clearances and creepage distances

|                       |                |
|-----------------------|----------------|
| Standards/regulations | EN IEC 60664-1 |
|-----------------------|----------------|

## Mounting

|                   |                   |
|-------------------|-------------------|
| Mounting type     | DIN rail mounting |
| Mounting position | any               |

## Notes

|                    |  |
|--------------------|--|
| Notes on operation | For proper use, the specifications of the installation directive (see Downloads) must be observed. For applications or use with third-party products, the specifications, and the safety and warning instructions of the respective third-party manufacturer must also be met. |
|--------------------|--|

# FLKM 50/32P/PLC - Passive module

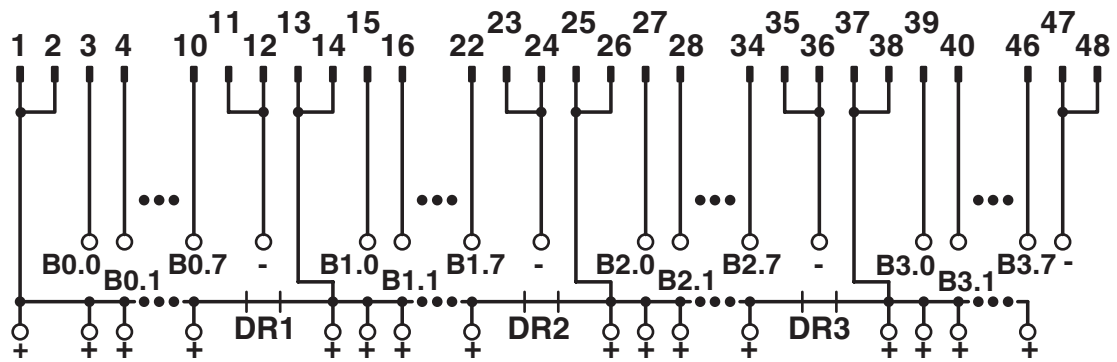


2291121

<https://www.phoenixcontact.com/us/products/2291121>

## Drawings

Circuit diagram



Connection scheme FLKM 50/32P/PLC

# FLKM 50/32P/PLC - Passive module



2291121

<https://www.phoenixcontact.com/us/products/2291121>

## Approvals

To download certificates, visit the product detail page: <https://www.phoenixcontact.com/us/products/2291121>

|  <b>cUL Recognized</b><br>Approval ID: E238705 |                       |                       |                   |                             |
|---|-----------------------|-----------------------|-------------------|-----------------------------|
|   | Nominal voltage $U_N$ | Nominal current $I_N$ | Cross section AWG | Cross section $\text{mm}^2$ |
| keine   |                       |                       |                   |                             |
|   | 125 V                 | 2 A                   | -                 | -                           |

|  <b>UL Recognized</b><br>Approval ID: E238705 |                       |                       |                   |                             |
|--|-----------------------|-----------------------|-------------------|-----------------------------|
|  | Nominal voltage $U_N$ | Nominal current $I_N$ | Cross section AWG | Cross section $\text{mm}^2$ |
| keine  |                       |                       |                   |                             |
|  | 125 V                 | 2 A                   | -                 | -                           |

# FLKM 50/32P/PLC - Passive module



2291121

<https://www.phoenixcontact.com/us/products/2291121>

## Classifications

### ECLASS

|             |          |
|-------------|----------|
| ECLASS-13.0 | 27141152 |
| ECLASS-15.0 | 27141152 |

### ETIM

|           |          |
|-----------|----------|
| ETIM 10.0 | EC002780 |
|-----------|----------|

### UNSPSC

|             |          |
|-------------|----------|
| UNSPSC 21.0 | 39121400 |
|-------------|----------|

# FLKM 50/32P/PLC - Passive module



2291121

<https://www.phoenixcontact.com/us/products/2291121>

## Environmental product compliance

### EU RoHS

|   |                    |
|---|--------------------|
| Fulfills EU RoHS substance requirements | Yes, No exemptions |
|---|--------------------|

### China RoHS

|  |  |
|--|--|
| Environment friendly use period (EFUP) | EFUP-E                                   |
|  | No hazardous substances above the limits |

### EU REACH SVHC

|                                     |                            |
|-------------------------------------|----------------------------|
| REACH candidate substance (CAS No.) | No substance above 0.1 wt% |
|-------------------------------------|----------------------------|

Phoenix Contact 2026 © - all rights reserved  
<https://www.phoenixcontact.com>

Phoenix Contact USA  
586 Fulling Mill Road  
Middletown, PA 17057, United States  
(+717) 944-1300  
[info@phoenixcon.com](mailto:info@phoenixcon.com)