

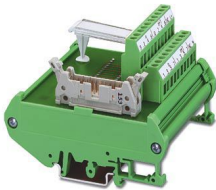
FLKM 20/LA/I/S100 - Passive module



2287575

<https://www.phoenixcontact.com/us/products/2287575>

Please be informed that the data shown in this PDF document is generated from our online catalog. Please find the complete data in the user documentation. Our general terms of use for downloads are valid.



VARIOFACE input module, 16 channels for Siemens SIMATIC® S5-100U, with additional LED status display

The figure shows version FLKM 20/I/S100

Commercial data

Item number	2287575
Packing unit	1 pc
Note	Made to order (non-returnable)
Sales key	C421
Product key	DK218S
GTIN	4017918056438
Weight per piece (including packing)	182.9 g
Weight per piece (excluding packing)	171.9 g
Customs tariff number	85369010
Country of origin	DE

FLKM 20/LA/I/S100 - Passive module



2287575

<https://www.phoenixcontact.com/us/products/2287575>

Technical data

Product properties

Product type	Interface module
Product family	VARIOFACE

Insulation characteristics

Overvoltage category	II
Pollution degree	2

Electrical properties

Nominal voltage U_N	24 V DC (up to 30 V DC)
-----------------------	-------------------------

Connection data

Stripping length	8 mm
Screw thread	M3
Conductor cross-section rigid	0.2 mm ² ... 4 mm ²
Conductor cross-section flexible	0.2 mm ² ... 2.5 mm ²
Conductor cross-section AWG	24 ... 12
Connection method	IDC/FLK pin strip
Pitch	2.54 mm

Signaling

Status display	LED
Status display present	yes

Dimensions

Item dimensions

Width	78.8 mm
Height	90 mm
Depth	68 mm

Material specifications

Color	green (RAL 6021)
Housing insulation material	Polyamide 6.6 green

Environmental and real-life conditions

Ambient conditions

Ambient temperature (operation)	-20 °C ... 50 °C
---------------------------------	------------------

Standards and regulations

Standards/regulations	IEC 60664
	IEC 60664A
	DIN VDE 0110

FLKM 20/LA/I/S100 - Passive module



2287575

<https://www.phoenixcontact.com/us/products/2287575>

	DIN VDE 0160 (in parts)
--	-------------------------

Mounting

Mounting position	any
-------------------	-----

Notes

Notes on operation	For proper use, the specifications of the installation directive (see Downloads) must be observed. For applications or use with third-party products, the specifications, and the safety and warning instructions of the respective third-party manufacturer must also be met.
--------------------	--

FLKM 20/LA//S100 - Passive module

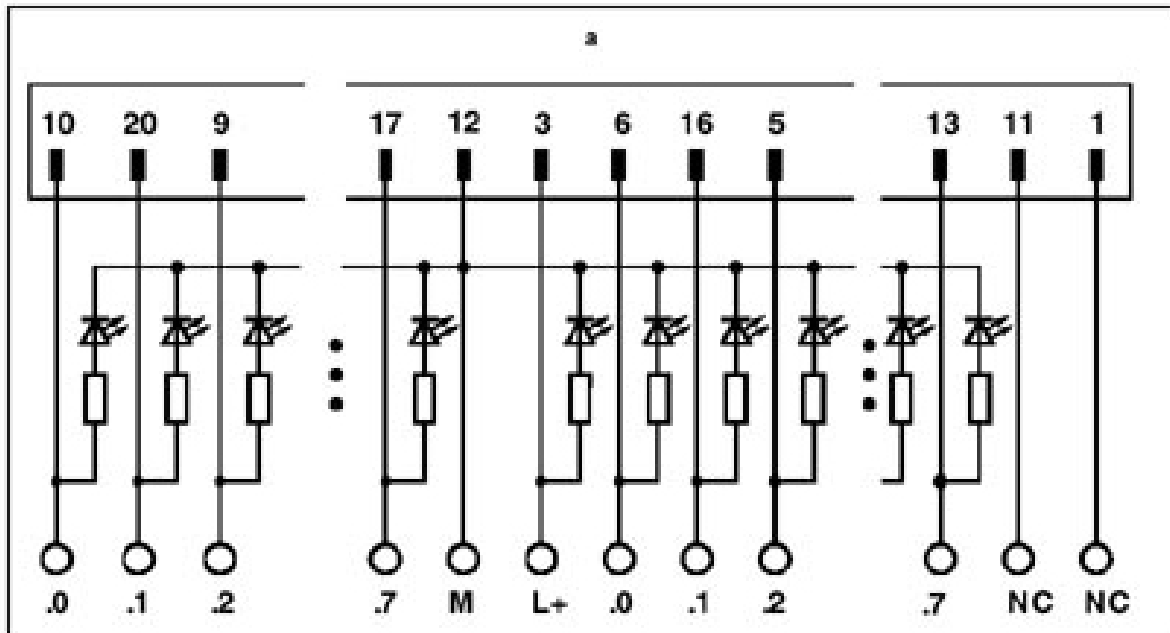


2287575

<https://www.phoenixcontact.com/us/products/2287575>

Drawings

Circuit diagram



FLKM 20/LA/I/S100 - Passive module



2287575

<https://www.phoenixcontact.com/us/products/2287575>

Environmental product compliance

EU REACH SVHC

REACH candidate substance (CAS No.)	No substance above 0.1 wt%
-------------------------------------	----------------------------

Phoenix Contact 2026 © - all rights reserved

<https://www.phoenixcontact.com>

Phoenix Contact USA
586 Fulling Mill Road
Middletown, PA 17057, United States
(+717) 944-1300
info@phoenixcon.com