

DFLK 50/PLC - Passive module

2284507

<https://www.phoenixcontact.com/us/products/2284507>

Please be informed that the data shown in this PDF document is generated from our online catalog. Please find the complete data in the user documentation. Our general terms of use for downloads are valid.



Panel feed-through VARIOFACE, for direct coupling of single signal lines (32 channels) of up to 2.5 mm² to flat-ribbon cable connectors

Commercial data

Item number	2284507
Packing unit	1 pc
Note	Made to order (non-returnable)
Sales key	NULL
Product key	DK21C1
GTIN	4017918055677
Weight per piece (including packing)	161.16 g
Weight per piece (excluding packing)	1.61 g
Customs tariff number	85369010
Country of origin	DE

DFLK 50/PLC - Passive module



2284507

<https://www.phoenixcontact.com/us/products/2284507>

Technical data

Product properties

Product type	Interface module
Product family	VARIOFACE
Number of positions	50
No. of channels	32

Insulation characteristics

Overvoltage category	II
Pollution degree	2

Electrical properties

Nominal voltage U_N	< 50 V AC
	60 V DC
Max. current carrying capacity per branch	1 A
Max. total current of all branches	8 A

Supported controller: SIEMENS S7-400

Suitable I/O card	6ES7421-1BL01-0AA0
	6ES7422-1BL00-0AA0
	6ES7422-7BL00-0AB0

Supported controller: ALLEN-BRADLEY ControlLogix

Suitable I/O card	1756-IB32
	1756-OB32

Supported controller: ALLEN-BRADLEY PLC 5

Suitable I/O card	1771 IBN
	1771 OBN

Supported controller: HONEYWELL Experion PKS C200

Suitable I/O card	TC-IDD 321
	TC-ODD 321

Supported controller: MITSUBISHI MELSEC Q

Suitable I/O card	QX81
	QY81P

Supported controller: SCHNEIDER ELECTRIC Modicon TSX QUANTUM

Suitable I/O card	DDI 353
	DDI 853
	DAI 353
	DAI 453
	DDO 353

Supported controller: SIEMENS S7-300 / ET 200 M

DFLK 50/PLC - Passive module



2284507

<https://www.phoenixcontact.com/us/products/2284507>

Suitable I/O card	CPU 313C-2DP
	CPU 314C-2DP
	CPU 314C-2PtP
	6ES7321-1BL00-0AA0
	6ES7322-1BL00-0AA0
	6ES7323-1BL00-0AA0
	CPU 313C
	CPU 313C-2PtP

Connection data

Field level

Connection in acc. with standard	IEC / EN
Connection method	Screw connection
Stripping length	8 mm
Screw thread	M3
Conductor cross-section rigid	0.2 mm ² ... 4 mm ²
Conductor cross-section flexible	0.2 mm ² ... 2.5 mm ²
Conductor cross-section AWG	24 ... 12

Controller level

Connection method	IDC/FLK pin strip
Number of connections	1
Number of positions	50
Pitch	2.54 mm

Signaling

Status display	no
Status display present	no

Dimensions

Item dimensions

Height	49 mm
--------	-------

Material specifications

Color	green (RAL 6021)
Housing insulation material	Polyamide PA non-reinforced

Environmental and real-life conditions

Ambient conditions

Ambient temperature (operation)	-20 °C ... 50 °C
Ambient temperature (storage/transport)	-20 °C ... 70 °C

Standards and regulations

IEC 60664

DFLK 50/PLC - Passive module



2284507

<https://www.phoenixcontact.com/us/products/2284507>

Standards/regulations	IEC 60664A
	DIN VDE 0110
	DIN VDE 0160 (in parts)

Mounting

Mounting position	any
-------------------	-----

Notes

Notes on operation	For proper use, the specifications of the installation directive (see Downloads) must be observed. For applications or use with third-party products, the specifications, and the safety and warning instructions of the respective third-party manufacturer must also be met.
--------------------	--

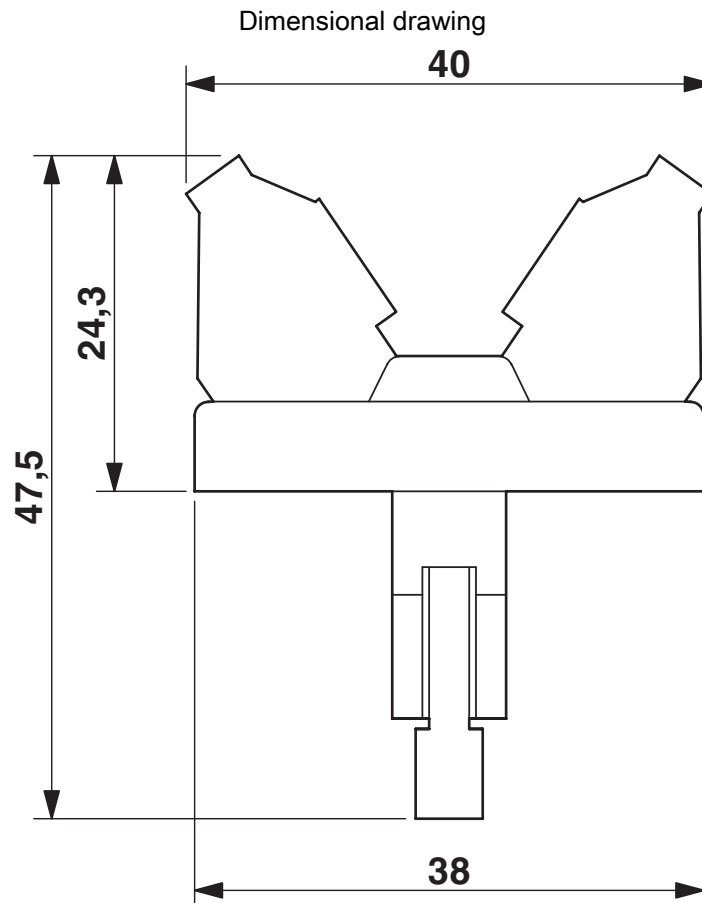
DFLK 50/PLC - Passive module

2284507

<https://www.phoenixcontact.com/us/products/2284507>



Drawings



Panel cutout 9 x 83.5

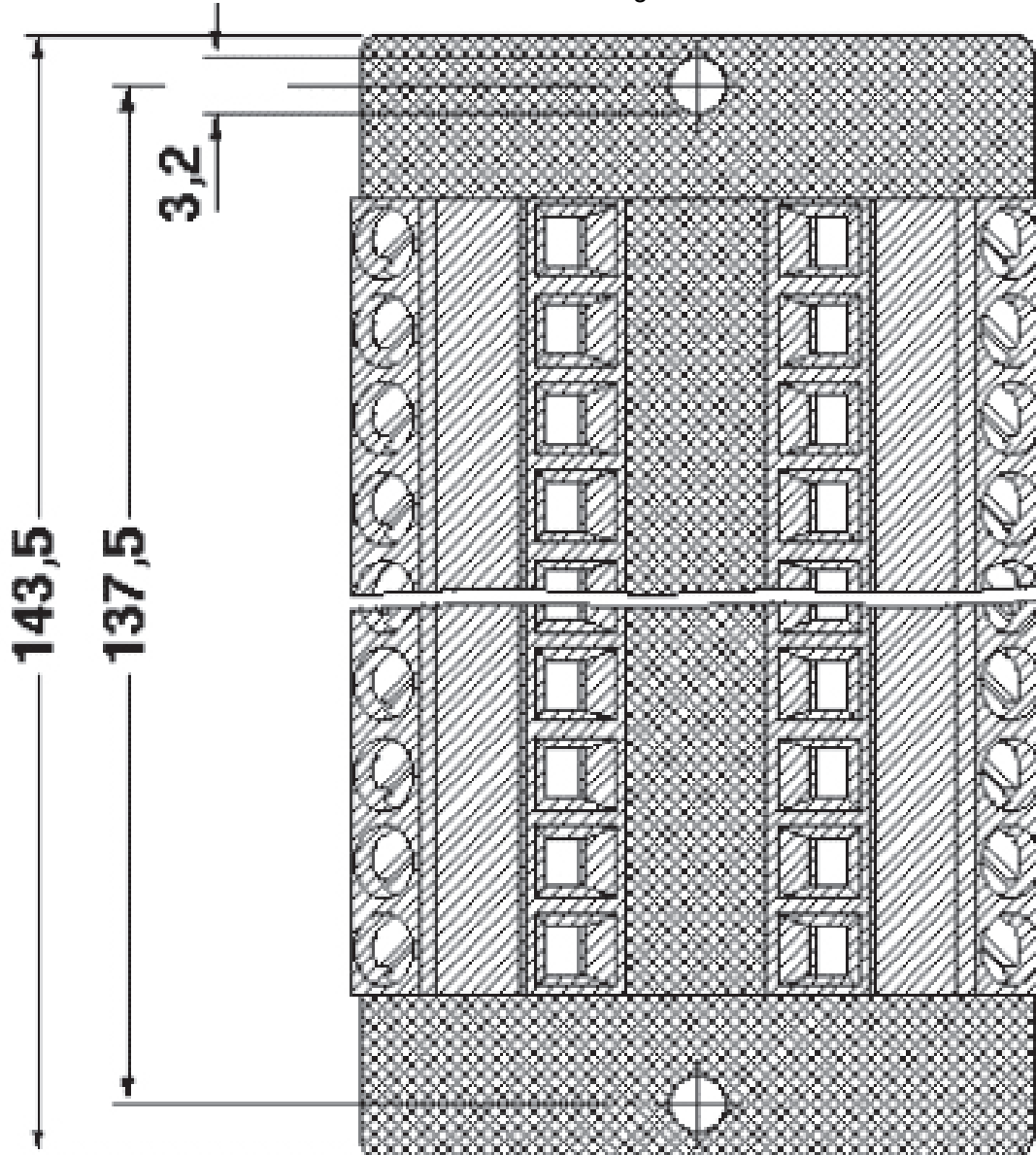
DFLK 50/PLC - Passive module

2284507

<https://www.phoenixcontact.com/us/products/2284507>



Dimensional drawing



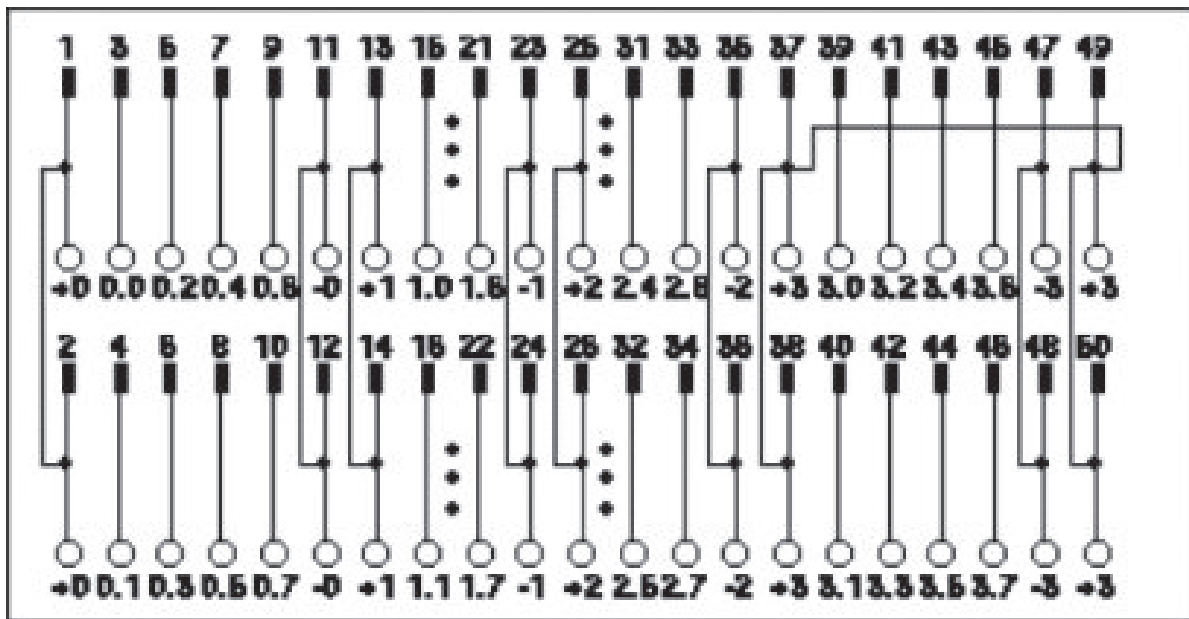
DFLK 50/PLC - Passive module



2284507

<https://www.phoenixcontact.com/us/products/2284507>

Circuit diagram



DFLK 50/PLC - Passive module

2284507

<https://www.phoenixcontact.com/us/products/2284507>



Environmental product compliance

EU REACH SVHC

REACH candidate substance (CAS No.)	
-------------------------------------	--

	No substance above 0.1 wt%
--	----------------------------

Phoenix Contact 2026 © - all rights reserved

<https://www.phoenixcontact.com>

Phoenix Contact USA
586 Fulling Mill Road
Middletown, PA 17057, United States
(+717) 944-1300
info@phoenixcon.com