

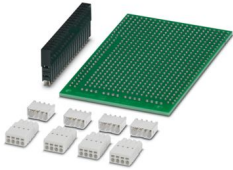
RPI-BC INT-PCB SET - PCB

2202994

<https://www.phoenixcontact.com/us/products/2202994>

Please be informed that the data shown in this PDF document is generated from our online catalog. Please find the complete data in the user documentation. Our general terms of use for downloads are valid.

Perfboard with GPIO connection incl. PTSM terminal blocks



Commercial data

Item number	2202994
Packing unit	1 pc
Minimum order quantity	1 pc
Sales key	AC10
Product key	ACHBAE
GTIN	4055626292618
Weight per piece (including packing)	30.2 g
Weight per piece (excluding packing)	30.33 g
Customs tariff number	85366990
Country of origin	DE

RPI-BC INT-PCB SET - PCB

2202994

<https://www.phoenixcontact.com/us/products/2202994>

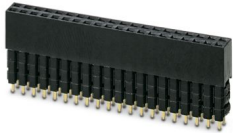
Set consists of

PSTD 0,65X0,65/40-2,54 - Female strip

2202992

<https://www.phoenixcontact.com/us/products/2202992>

Female strip for connecting an additional PCB or PCB with hole pattern to the GPIOs of the Raspberry Pi computer

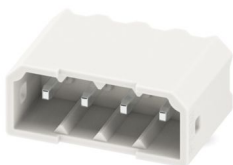


PTSM 0,5/ 4-HH-2,5-THR WH R32 - PCB header

1814867

<https://www.phoenixcontact.com/us/products/1814867>

PCB headers, nominal cross section: 0.5 mm², color: signal white, nominal current: 6 A, rated voltage (III/2): 160 V, contact surface: Sn, contact connection type: Pin, number of potentials: 4, number of rows: 1, number of positions: 4, number of connections: 4, product range: PTSM 0,5/..-HH-THR WH, pitch: 2.5 mm, mounting: THR soldering / wave soldering, pin layout: Linear pinning, solder pin [P]: 2.1 mm, number of solder pins per potential: 1, plug-in system: COMBICON PTSM, Pin connector pattern alignment: Standard, locking: without, mounting method: without, type of packaging: 32 mm wide tape



RPI-BC INT-PCB SET - PCB

2202994

<https://www.phoenixcontact.com/us/products/2202994>



PTSM 0,5/ 4-P-2,5 WH - PCB connector

1704857

<https://www.phoenixcontact.com/us/products/1704857>



PCB connector, nominal cross section: 0.5 mm², color: white, nominal current: 6 A, rated voltage (III/2): 160 V, contact surface: Sn, contact connection type: Socket, number of potentials: 4, number of rows: 1, number of positions: 4, number of connections: 4, product range: PTSM 0,5/...-P WH, pitch: 2.5 mm, connection method: Push-in spring connection, conductor/PCB connection direction: 0 °, plug-in system: COMBICON PTSM, locking: without, mounting method: without, type of packaging: packed in cardboard

Technical data

Product properties

Product type	Sample set
Housing type	DIN rail housing for use in distribution boards in accordance with DIN 43880
Housing series	BC
Pitch	2.54 mm

Dimensions

Pitch	2.54 mm
-------	---------

Material specifications

Color (Housing)	green (RAL 6021)
Material Housing	FR 4-21
Flammability rating according to UL 94	V0

RPI-BC INT-PCB SET - PCB



2202994

<https://www.phoenixcontact.com/us/products/2202994>

Classifications

ECLASS

ECLASS-15.0	27260692
ECLASS-13.0	27260692

ETIM

ETIM 10.0	EC001031
-----------	----------

UNSPSC

UNSPSC 21.0	31261500
-------------	----------

RPI-BC INT-PCB SET - PCB



2202994

<https://www.phoenixcontact.com/us/products/2202994>

Environmental product compliance

EU RoHS

Fulfills EU RoHS substance requirements	Yes, No exemptions
---	--------------------

China RoHS

Environment friendly use period (EFUP)	EFUP-E
	No hazardous substances above the limits

EU REACH SVHC

REACH candidate substance (CAS No.)	No substance above 0.1 wt%
-------------------------------------	----------------------------

Phoenix Contact 2026 © - all rights reserved
<https://www.phoenixcontact.com>

Phoenix Contact USA
586 Fulling Mill Road
Middletown, PA 17057, United States
(+717) 944-1300
info@phoenixcon.com