

# UM-BASIC 108/32 DEV-PCB - PCB

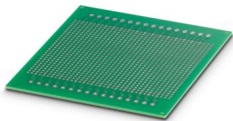


2202551

<https://www.phoenixcontact.com/us/products/2202551>

Please be informed that the data shown in this PDF document is generated from our online catalog. Please find the complete data in the user documentation. Our general terms of use for downloads are valid.

Perfboard for the UM-BASIC 108 DEV-KIT; for SMKDS-terminal blocks; ideal for manual soldering



## Your advantages

- Hole matrix PCB for self-assembly
- Assembly area: approx. 10,700 mm<sup>2</sup>
- Hole matrix dimension: 2.54 mm

## Commercial data

Item number	2202551
Packing unit	1 pc
Minimum order quantity	1 pc
Sales key	AC13
Product key	ACHDAE
GTIN	4055626142661
Weight per piece (including packing)	38.8 g
Weight per piece (excluding packing)	37.8 g
Customs tariff number	85340011
Country of origin	DE

2202551

<https://www.phoenixcontact.com/us/products/2202551>

## Technical data

### Notes

Assembly note	Please observe the application note in the download area.
---------------	---

### Product properties

Product type	PCB
Housing type	Press-drawn section housings
Housing type	Extruded profile housings
Housing series	UM-BASIC
Product family	UM-BASIC

### Material specifications

Color (Housing)	green (RAL 6021)
Housing material	FR 4-21

### Environmental and real-life conditions

#### Ambient conditions

Ambient temperature (operation)	110 °C
---------------------------------	--------

2202551

<https://www.phoenixcontact.com/us/products/2202551>

## Classifications

### ECLASS

ECLASS-13.0	27260692
ECLASS-15.0	27260692

### ETIM

ETIM 10.0	EC001031
-----------	----------

### UNSPSC

UNSPSC 21.0	31261500
-------------	----------

2202551

<https://www.phoenixcontact.com/us/products/2202551>

## Environmental product compliance

### EU RoHS

Fulfills EU RoHS substance requirements	Yes, No exemptions
---	--------------------

### China RoHS

Environment friendly use period (EFUP)	EFUP-E
	No hazardous substances above the limits

### EU REACH SVHC

REACH candidate substance (CAS No.)	No substance above 0.1 wt%
-------------------------------------	----------------------------

Phoenix Contact 2026 © - all rights reserved  
<https://www.phoenixcontact.com>

Phoenix Contact USA  
586 Fulling Mill Road  
Middletown, PA 17057, United States  
(+717) 944-1300  
[info@phoenixcon.com](mailto:info@phoenixcon.com)