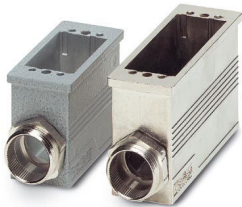


VC-MEMV-S2 - Housing

1884652

<https://www.phoenixcontact.com/us/products/1884652>

Please be informed that the data shown in this PDF document is generated from our online catalog. Please find the complete data in the user documentation. Our general terms of use for downloads are valid.



The figure shows versions, powder-coated and EMC-coated box mounting base

Box mounting base, made of metal, EMC-coated type 2, number of modules 3, cable screw connection Pg21

Your advantages

- Any position can be a PE contact

Commercial data

Item number	1884652
Packing unit	1 pc
Note	Made to order (non-returnable)
Sales key	NULL
Product key	ABLADB
GTIN	4017918164683
Weight per piece (including packing)	455.65 g
Weight per piece (excluding packing)	455.65 g
Customs tariff number	85369010
Country of origin	PL

VC-MEMV-S2 - Housing

1884652

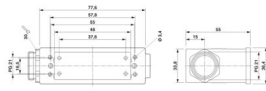
<https://www.phoenixcontact.com/us/products/1884652>

Technical data

Product properties

Product type	Panel mounting base
Type	VC2
No. of cable outlets	1
Number of module slots	3
Type of the screw connection	Pg21
Shielded	yes
Cable outlet	lateral

Dimensions

Dimensional drawing	
Width	36.4 mm
Height	55 mm
Length	77.6 mm
Thread type on seal side	Pg21

Material specifications

Color	nickel
Seal material	EPDM, conductive
Housing material	Die-cast zinc
Housing surface material	nickel-plated

Mechanical properties

Mechanical data

Type of the screw connection	Pg21
Locking type	Nut

Environmental and real-life conditions

Ambient conditions

Degree of protection	IP65/IP66/IP67
Ambient temperature (operation)	-40 °C ... 125 °C

VC-MEMV-S2 - Housing

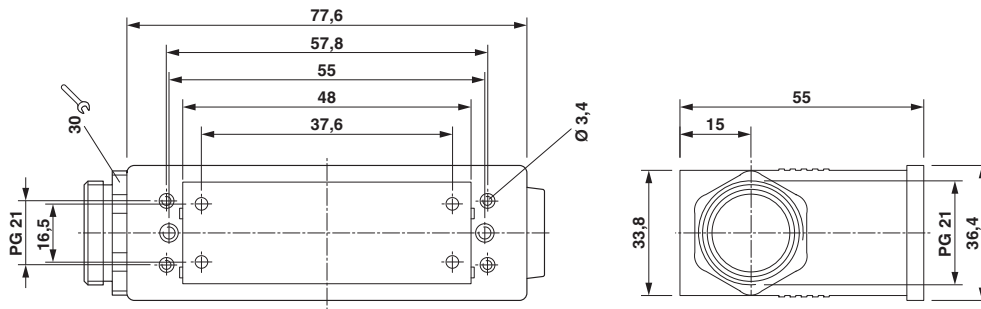
1884652

<https://www.phoenixcontact.com/us/products/1884652>



Drawings

Dimensional drawing



VC-MEMV-S2 - Housing

1884652

<https://www.phoenixcontact.com/us/products/1884652>



Environmental product compliance

EU REACH SVHC

REACH candidate substance (CAS No.)	No substance above 0.1 wt%
-------------------------------------	----------------------------

Phoenix Contact 2026 © - all rights reserved

<https://www.phoenixcontact.com>

Phoenix Contact USA
586 Fulling Mill Road
Middletown, PA 17057, United States
(+717) 944-1300
info@phoenixcon.com