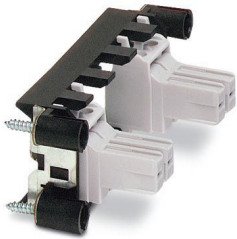


VC-M-TR2-PE - Sleeve frame

1853379

<https://www.phoenixcontact.com/us/products/1853379>

Please be informed that the data shown in this PDF document is generated from our online catalog. Please find the complete data in the user documentation. Our general terms of use for downloads are valid.



Sleeve frame, with capacitive PE, for contact insert modules, bridging via metal housing, type 2, number of insert modules 3

Commercial data

Item number	1853379
Packing unit	1 pc
Note	Made to order (non-returnable)
Sales key	AB01
Product key	ABLADA
GTIN	4017918144067
Weight per piece (including packing)	32.25 g
Weight per piece (excluding packing)	32.25 g
Customs tariff number	85369010
Country of origin	PL

VC-M-TR2-PE - Sleeve frame



1853379

<https://www.phoenixcontact.com/us/products/1853379>

Technical data

Product properties

Insulation characteristics

Degree of pollution	3
---------------------	---

Material specifications

Color of the housing part	black
Flammability rating according to UL 94	V0
Insulating material group	I
Housing material	PA
Contact material	CuZn
Contact surface material	nickel-plated
Contact carrier material	PA

Phoenix Contact 2026 © - all rights reserved
<https://www.phoenixcontact.com>

Phoenix Contact USA
586 Fulling Mill Road
Middletown, PA 17057, United States
(+717) 944-1300
info@phoenixcon.com